

Stroud District Local Plan

Early Scoping Consultation

Monday 29th June – Sunday 9th August 2026

You are invited to ...

... help shape the future of where you live

Stroud District Council is beginning the first steps towards preparing a new Local Plan, which will guide how the District grows and changes over the next 15–20 years.

This is your opportunity to **have your say from the very beginning** and help shape the future of the places you live, work and enjoy.

www.stroud.gov.uk/newlocalplan

NEW

Why are we preparing a *new* Local Plan?

The Local Plan is the document that decides:

- Where new homes, jobs and infrastructure may go
- How towns and villages might grow
- How we protect the countryside and the character of the District.

A new Local Plan gives us the chance to:

- Plan positively for future generations
- Provide homes
- Support local jobs and businesses
- Tackle climate change
- Make sure new development creates good places to live

A new faster planning system

The Government has introduced a new way of preparing Local Plans. This means:

- Plans must now be prepared more quickly
- The whole process is expected to take around **30 months**
- There Council is placing a stronger focus on getting **early input from local people**

This consultation is the **very first step in that process.**

Planning for new homes

The Council is required to plan for at least **846 new homes each year**.



Some of these homes already have planning permission or are being built



However, more land will still need to be identified for future development

We understand that this level of housebuilding will be **challenging**, and there are strong local views about growth.

The district has important constraints

Stroud District is a special place, but it also has real limits on where development can go. These include:



Areas at risk of flooding



The designated Cotswolds National Landscape (formerly known as the “Area of Outstanding Natural Beauty”)



Other sensitive landscapes, natural environments and built heritage



Limited road capacity and pressures on motorway junctions

This means that difficult choices will need to be made about how development is planned.

Infrastructure matters

New development must be supported by the right infrastructure. This includes:

- Roads, public transport and walking/cycling routes
- Schools and education
- Healthcare services
- Parks, green spaces and the natural environment
- Utilities and digital connections

We want to understand what infrastructure improvements matter most to you.

Visit
www.stroud.gov.uk/newlocalplan
to fill out our consultation survey and have
your say...

Please make sure you have read this consultation document before tackling the questionnaire

What are we asking you at this stage?

This is a very early consultation. We are not making decisions yet. Instead, we are asking for your views on:



No decisions have been made at this stage. Your views will help us test options for the next stage of the plan.

Considering different approaches to growth

We know that using previously developed (brownfield) land will help, but it will not be enough on its own.

Because of this, we need to think about different ways growth could happen and the consultation will ask for your views on the following options:

Option A – Proportionally dispersed growth (spreading development equitably between all towns and villages across the District)

Option B – Main settlements focus (focusing development in and around towns and the larger villages)

Option C – Infrastructure-led growth (linking development to where infrastructure providers consider most sustainable or can be improved)

Option D – Strategic growth locations (planning larger new developments or extensions such as garden villages)

Each of these approaches has advantages and disadvantages. We are asking for your views to help us understand what you think would work best.

We are not making decisions on sites

At this stage:

- ✗ We are **not** choosing sites for development
- ✗ We are **not** asking for detailed comments on individual locations

No decisions have been made about where development will go.

Call for Sites map

We have included a map showing sites that have been put forward by landowners and developers.

It is important to be clear:

The Council is required to consider all sites that are submitted

Many of these sites will not be suitable for development

Other sites may come forward and this consultation asks if you know of any sites we should consider

Being shown on the map does NOT mean:

- the site will be developed
- the site is suitable
- it is part of a future plan

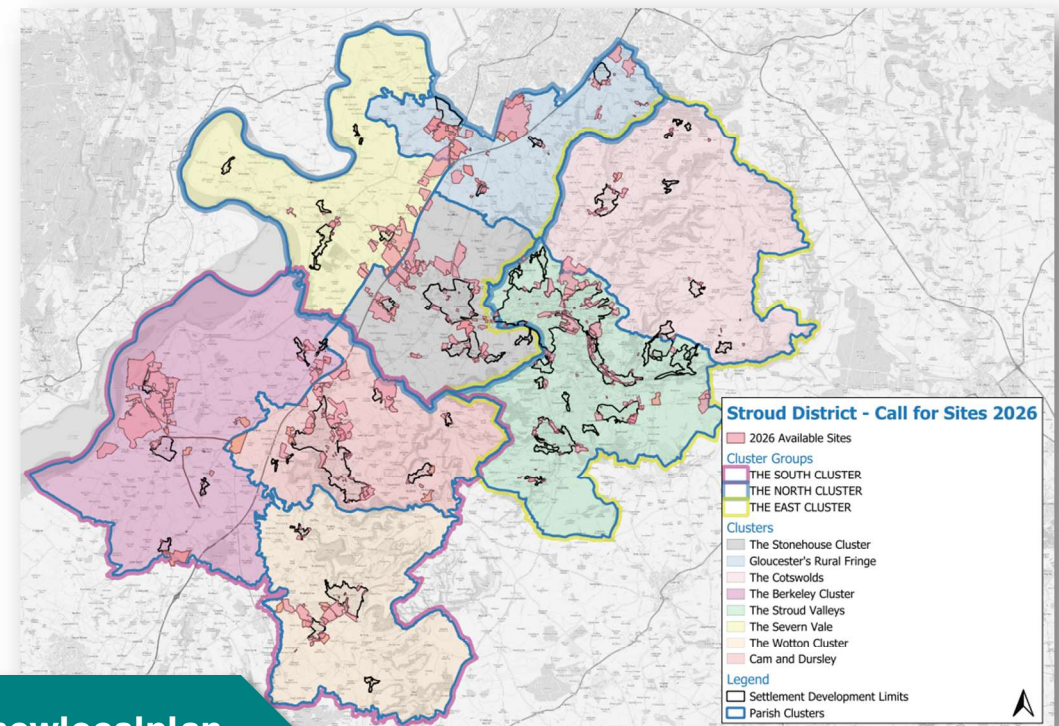
Why the map is included

The map is included only to give context.

It helps you to:

- see what land has been suggested
- think about different ways growth could be spread across the District

It is not a draft plan and does not show decisions.



You can view the sites map in detail at www.stroud.gov.uk/newlocalplan

Sharing your knowledge

We are also interested in your experience and local knowledge.

In the survey, you can tell us about:

- ? Local issues we should consider
- ? Anything that might make development easier or harder
- ? What matters most when deciding if development is acceptable

Planning across boundaries

Some issues do not stop at District boundaries, for example:



Travel and commuting



Flooding and water management



Environmental impacts



Major infrastructure

We will continue to work with neighbouring councils and partners on these.

Your views matter

Your feedback will help us:

- understand what is important to local communities
- shape the direction of the plan
- balance growth with protecting what makes the District special



What next?

Stay involved

There will be more opportunities to get involved as the Local Plan develops.

We want to make sure that future consultations are easy to take part in and reach as many people as possible.

What happens next?

After this consultation:

1. We will review everything people tell us
2. Use this to develop different options for the future
3. Assess these options carefully
4. Carry out further consultation on more detailed proposals



Stroud Local Plan – Simplified Programme (2026 to Adoption):

- **1 June 2026** – Call for Sites opens
- **29 June 2026** – Formal start of plan-making (Declaration)
- **29 June – early August 2026 (6 weeks)**
Stage 1 Public Consultation – Early Engagement and Scoping:
 - Vision and objectives
 - Spatial options (high-level growth approaches)
 - Sustainability / environmental considerations
 - Key issues and priorities
 - List of all known sites (*for information only; not a site selection consultation*)
- **July – August 2026**
Targeted stakeholder workshops (Councillors, Towns & Parishes, partners)
 - Testing early ideas and spatial approaches
 - Gathering local and technical insight
- **31 October 2026 – Gateway 1** (self-assessment)
- **From November 2026**
Evidence base preparation, detailed site assessment and policy direction work begins.
- **2027 – Options Development and Testing**
 - Development of spatial strategy and site options
 - Ongoing SEA / environmental assessment
- **Stage 2 Consultation – Emerging Options (Summer)**
 - More developed spatial strategy
 - Initial assessment of site options
 - Trade-offs between different approaches
- **Gateway 2** – Preferred strategy confirmed
- **2028 – Draft Plan Preparation and Formal Consultation**
 - April 2028 **Local Government Reorganisation** goes live
 - Preparation of Draft Local Plan (policies + proposed allocations)
 - Full SEA / environmental report
 - **Stage 3 Consultation – Draft Plan (Formal)**
 - Draft policies
 - Proposed site allocations
 - Full evidence base and assessments
- **Gateway 3** – Pre-submission readiness
- **2029 – Submission and Examination**
 - **Submission Consultation** (Regulation-style representations)
 - Final opportunity to comment on soundness/legal compliance
 - Independent Examination in Public (EiP)
 - Inspector’s Report issued
- **2029 / 2030 – Adoption**
 - Formal adoption of the Local Plan

In summary ...

This is an early stage consultation

- No decisions have been made
- We need to plan for at least 846 homes per year
- Growth will be challenging and requires careful choices
- Infrastructure and the environment are key considerations
- Your views will help shape the future of Stroud District



Early Scoping Consultation

The consultation is open for 6 weeks from
Monday 29th June – 11pm on Sunday 9th August 2026

Please make sure your response is submitted before the closing date.

Visit
www.stroud.gov.uk/newlocalplan
to fill out our consultation survey and
have your say...

Please make sure you have read this consultation document before tackling the questionnaire