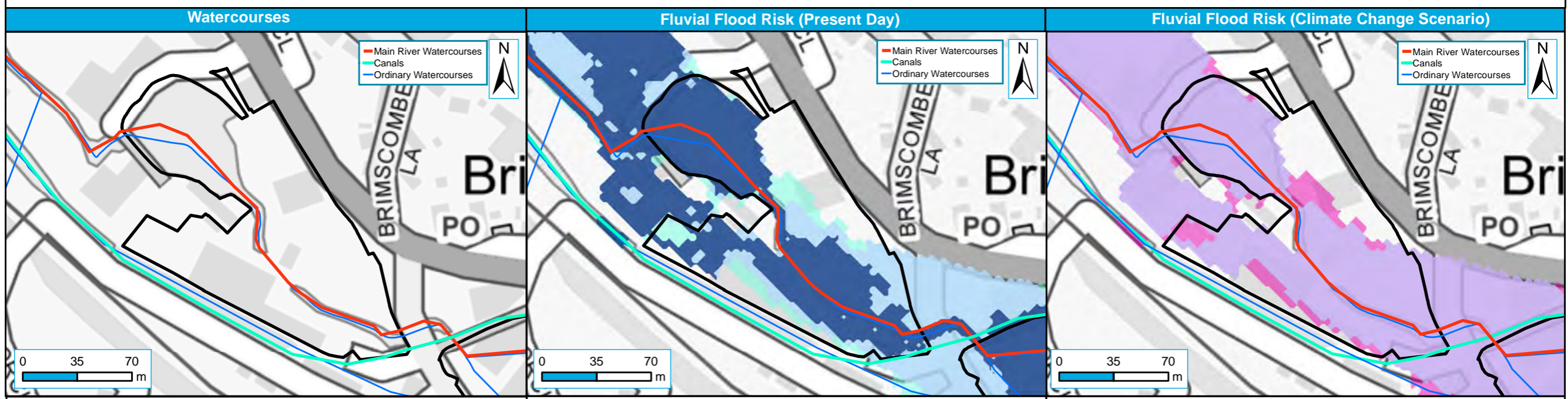


Site reference	PS01
Site Name	Briscombe Mill

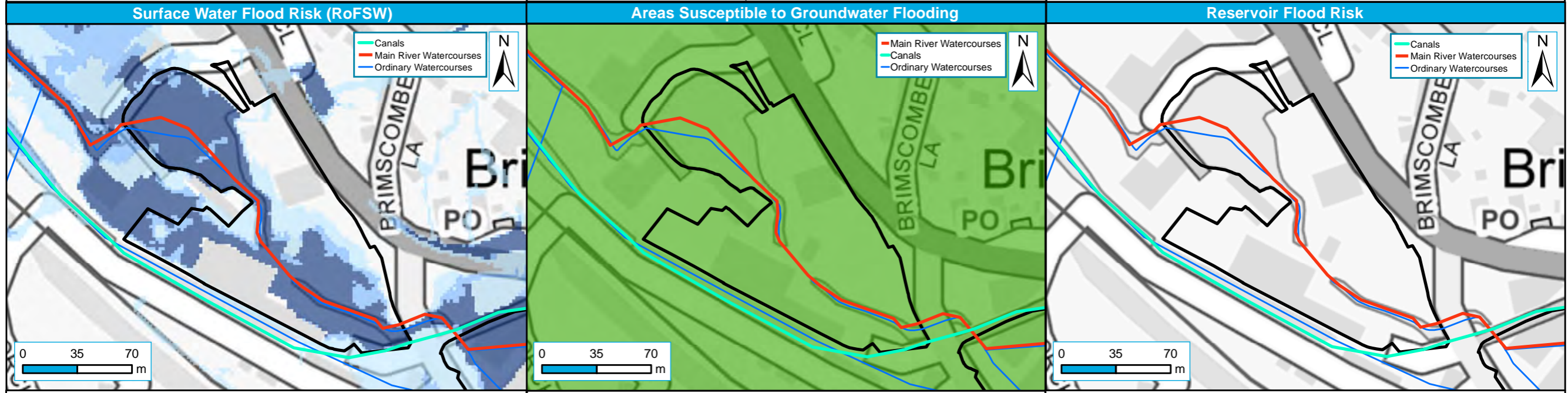
Stroud District Council Strategic Flood Risk Assessment Level 2 Detailed Site Summary Tables



Contains Ordnance Survey data © Crown copyright and database right 2019. Contains public sector information licensed under the Open Government Licence v3.0.



Level 2 Sites	Main Rivers	Ordinary Watercourses	Canal
Level 2 Sites	Functional Floodplain (1 in 20-year or 25-year event where available, or 1 in 100-year where not)	1 in 100-year (1% AEP)	1 in 100-year (1% AEP) plus Climate Change*
	1 in 1,000-year (0.1% AEP)	*1 in 1,000-year (0.1% AEP) has been used as a proxy, while await 1 in 100-year + CC layer	



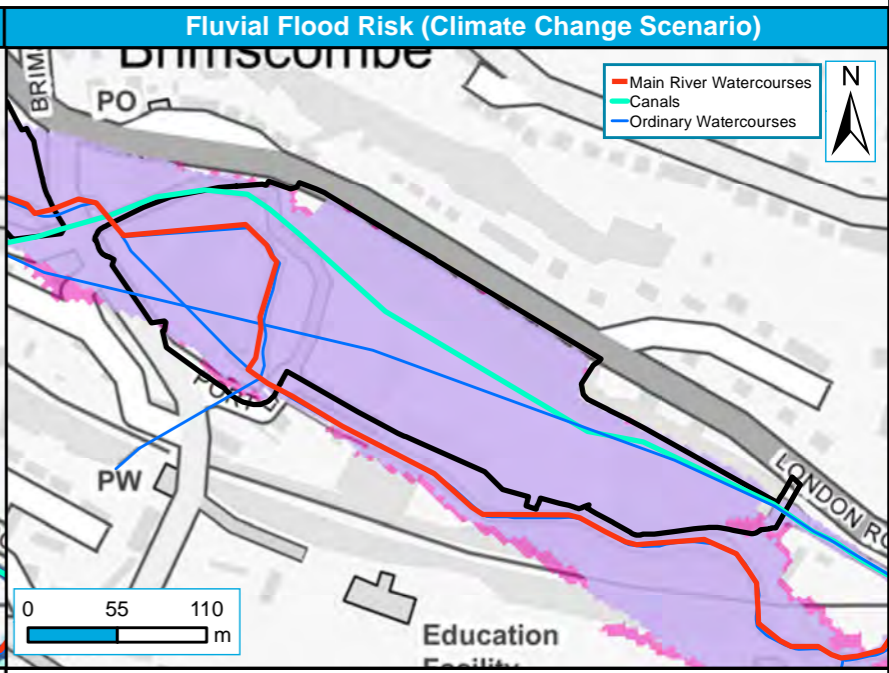
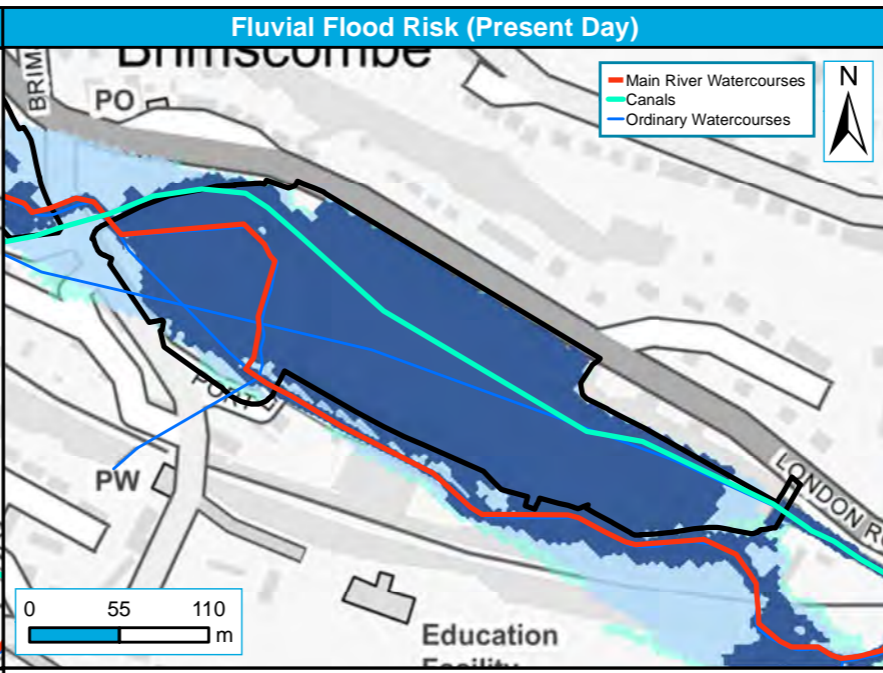
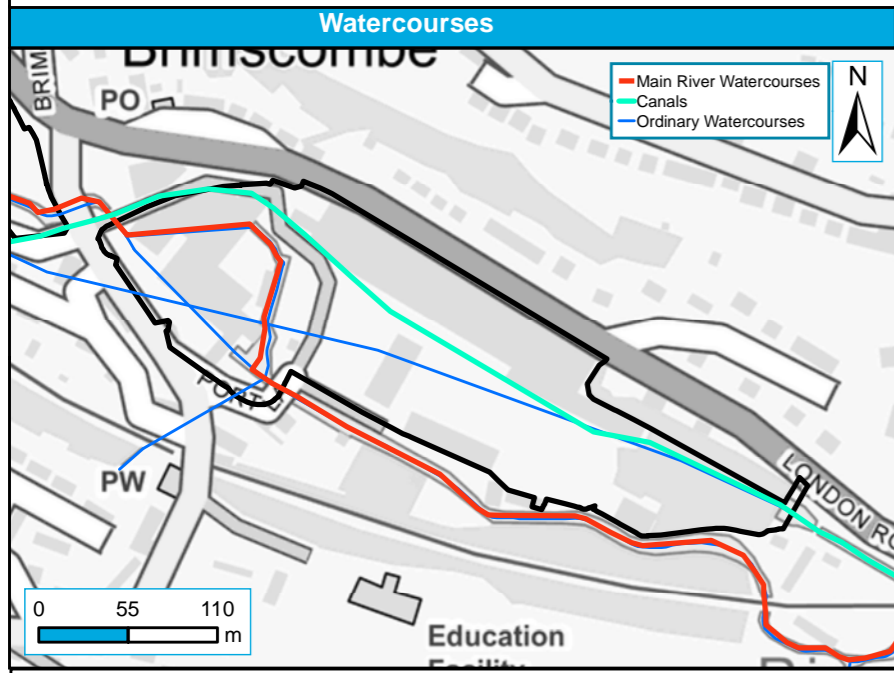
Level 2 Sites	RoFSW 1 in 100-year extent (1% AEP)	Level 2 Sites	Areas Susceptible to Groundwater Flooding
RoFSW 1 in 30-year extent (3.3% AEP)	RoFSW 1 in 1000-year extent (0.1% AEP)	Level 2 Sites	Reservoir Flood Risk
			>= 25% < 50%
			>= 50% < 75%
			>= 75%
			< 25%

Site reference	PS02
Site Name	Briscombe Port

Stroud District Council Strategic Flood Risk Assessment Level 2 Detailed Site Summary Tables



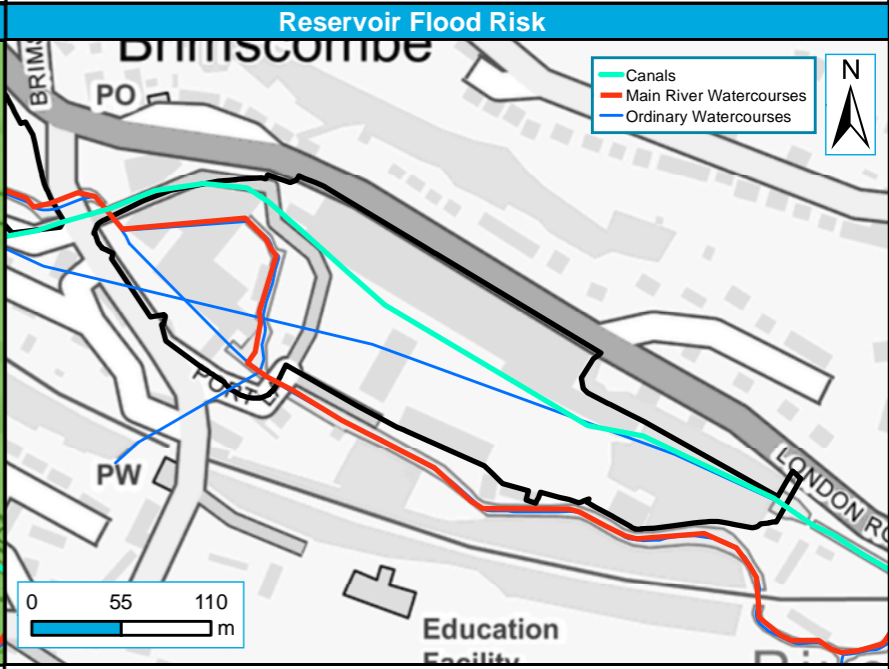
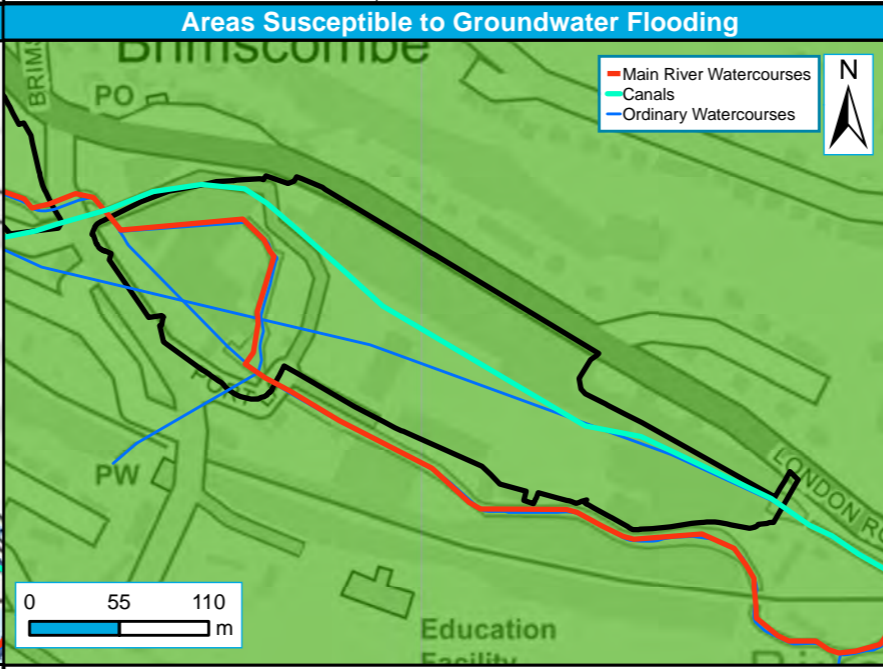
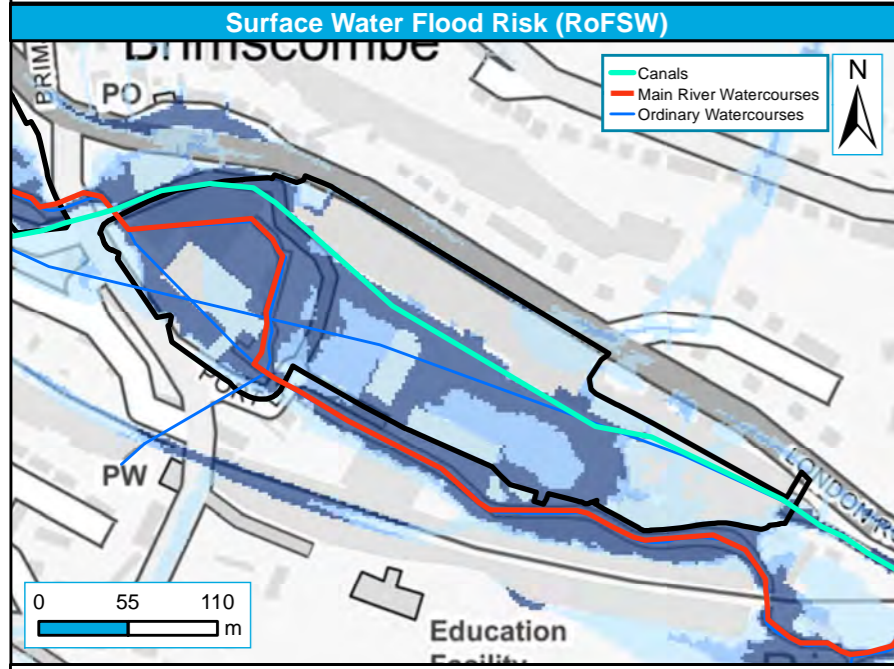
Contains Ordnance Survey data © Crown copyright and database right 2019. Contains public sector information licensed under the Open Government Licence v3.0.



Level 2 Sites Main Rivers Ordinary Watercourses Canal

Level 2 Sites Functional Floodplain (1 in 20-year or 25-year event where available, or 1 in 100-year where not) 1 in 100-year (1% AEP) 1 in 1,000-year (0.1% AEP)

Level 2 Sites 1 in 100-year (1% AEP) 1 in 100-year (1% AEP) plus Climate Change*
*1 in 1,000-year (0.1% AEP) has been used as a proxy, while await 1 in 100-year + CC layer



Level 2 Sites RoFSW 1 in 30-year extent (3.3% AEP) RoFSW 1 in 100-year extent (1% AEP) RoFSW 1 in 1000-year extent (0.1% AEP)

Level 2 Sites Areas Susceptible to Groundwater Flooding < 25% >= 25% < 50% >= 50% < 75% >= 75%

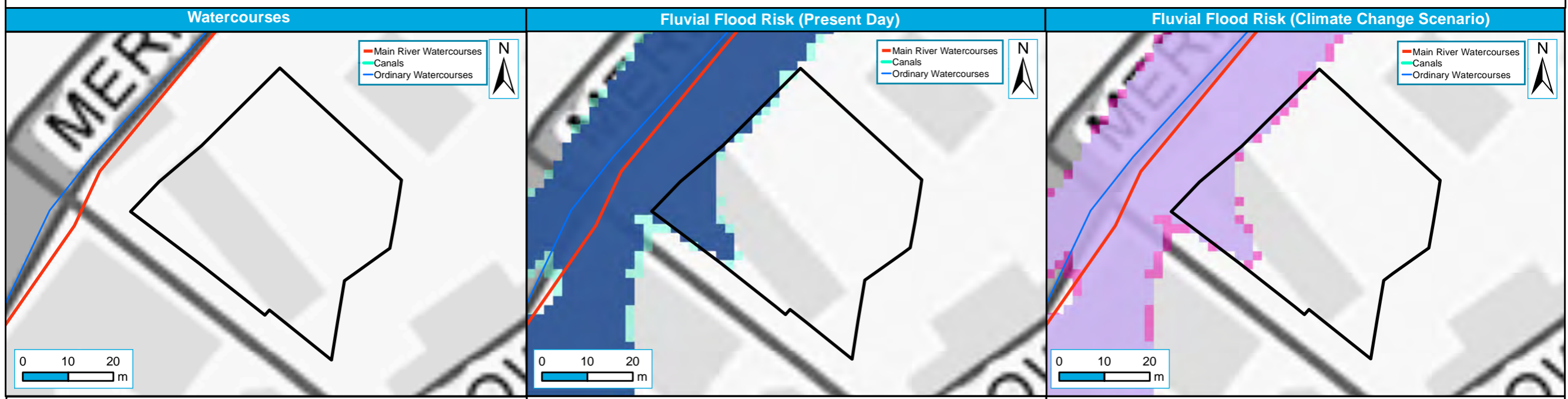
Level 2 Sites Reservoir Flood Risk

Site reference	PS11
Site Name	Merrywalks Arches, Merrywalks, Stroud

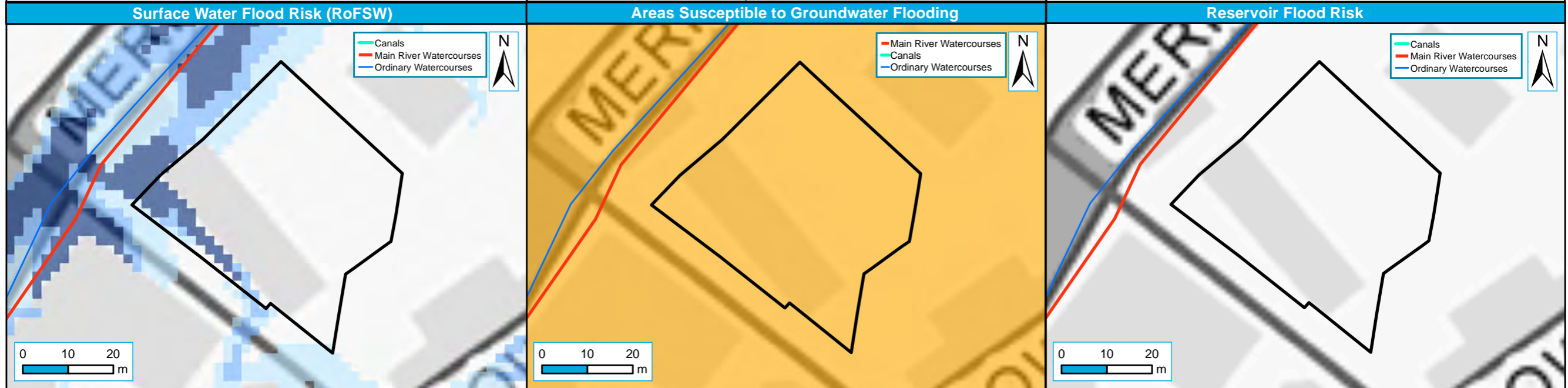
Stroud District Council Strategic Flood Risk Assessment Level 2 Detailed Site Summary Tables



Contains Ordnance Survey data © Crown copyright and database right 2019. Contains public sector information licensed under the Open Government Licence v3.0.



<p> Level 2 Sites — Main Rivers — Ordinary Watercourses — Canal </p>	<p> Functional Floodplain (1 in 20-year or 25-year event where available, or 1 in 100-year where not) 1 in 100-year (1% AEP) 1 in 1,000-year (0.1% AEP) </p>	<p> Level 2 Sites 1 in 100-year (1% AEP) 1 in 100-year (1% AEP) plus Climate Change* </p> <p style="font-size: x-small;">*1 in 1,000-year (0.1% AEP) has been used as a proxy, while await 1 in 100-year + CC layer</p>
--	---	--



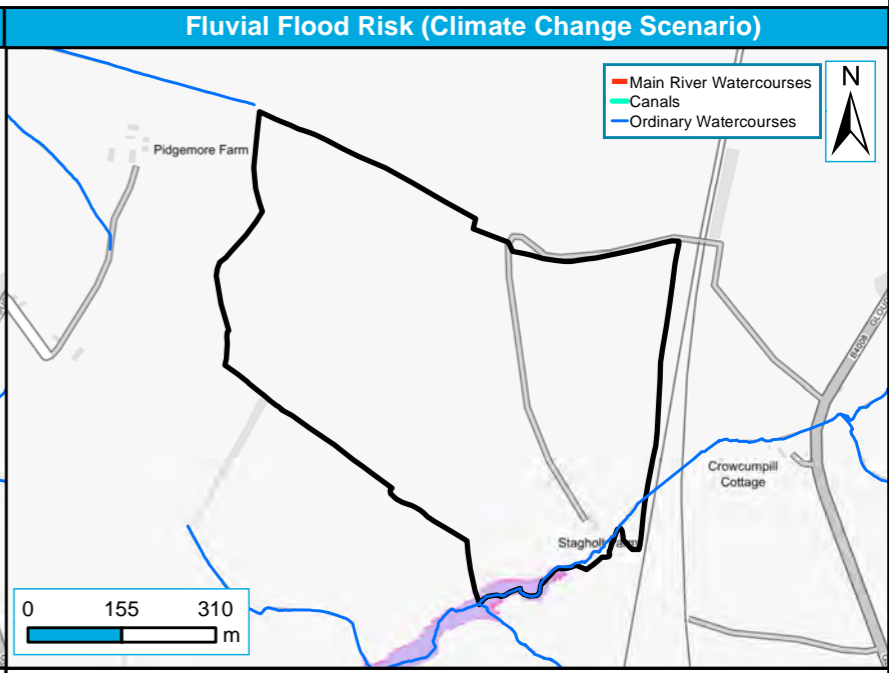
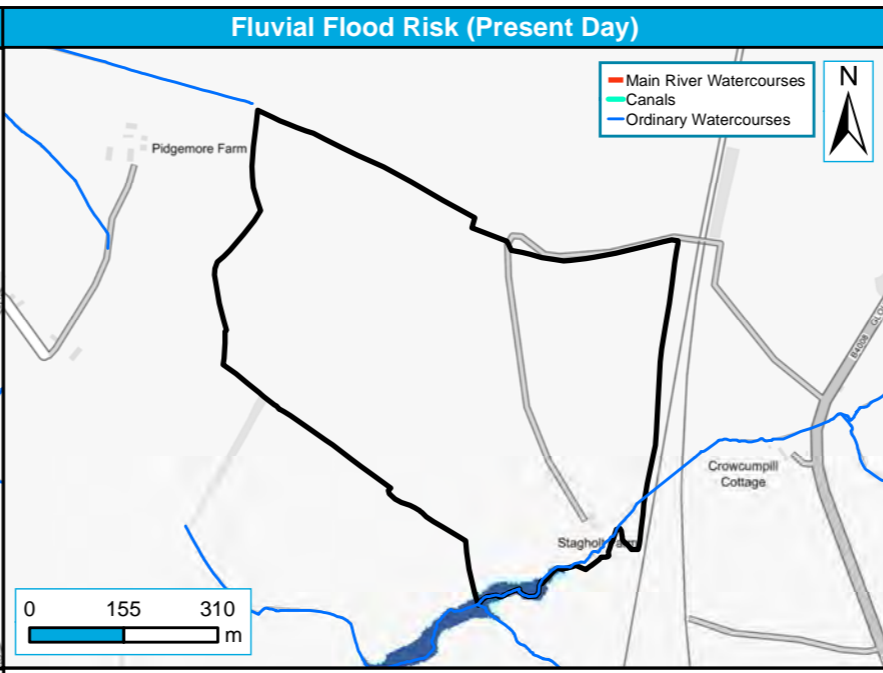
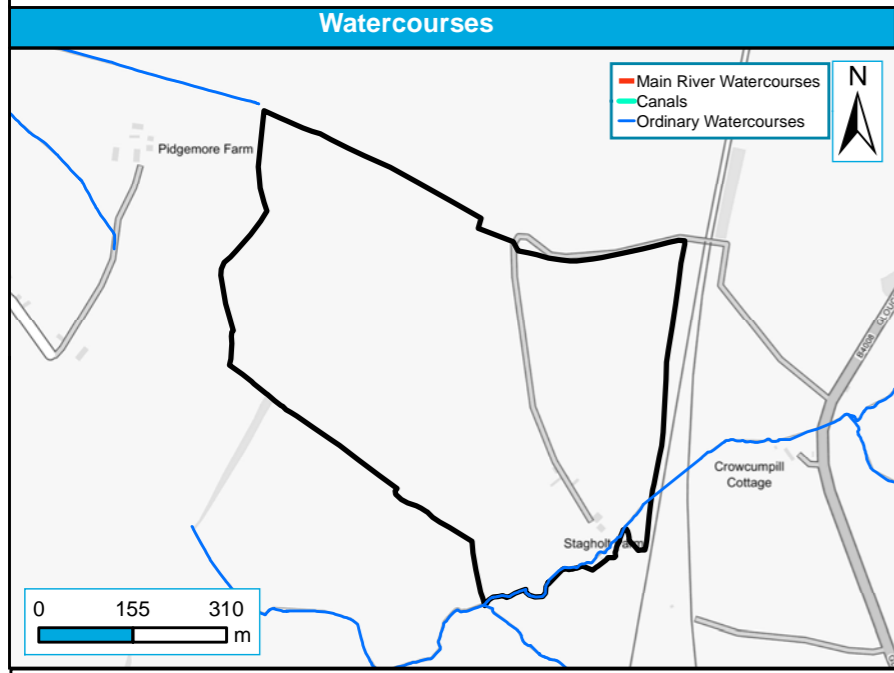
<p> Level 2 Sites RoFSW 1 in 100-year extent (1% AEP) RoFSW 1 in 1000-year extent (0.1% AEP) </p>	<p> Level 2 Sites >= 25% <50% >= 50% <75% < 25% >= 75% </p>	<p> Level 2 Sites Reservoir Flood Risk </p>
--	--	--

Site reference	PS19
Site Name	Northwest of Stonehouse

Stroud District Council Strategic Flood Risk Assessment Level 2 Detailed Site Summary Tables



Contains Ordnance Survey data © Crown copyright and database right 2019. Contains public sector information licensed under the Open Government Licence v3.0.

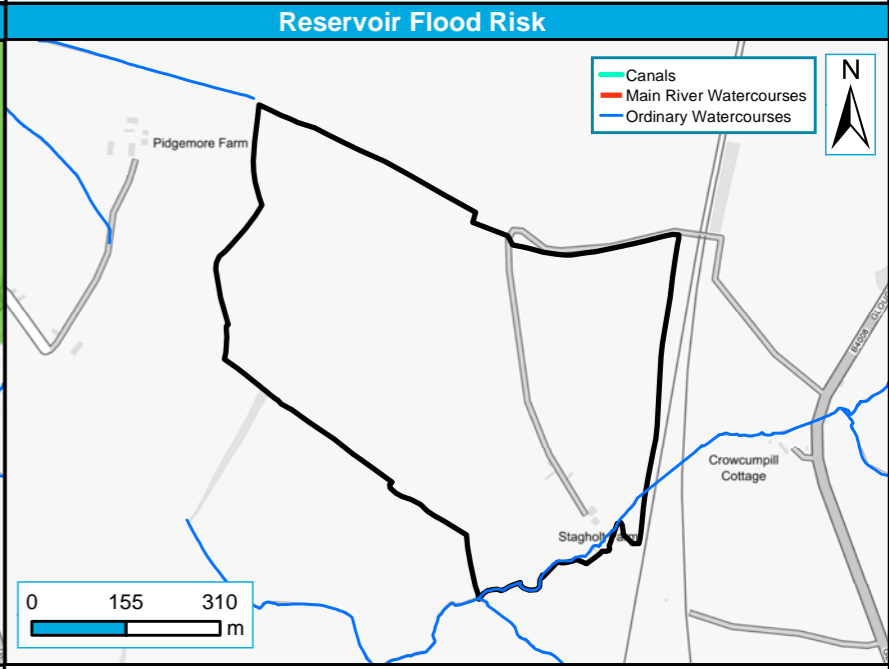
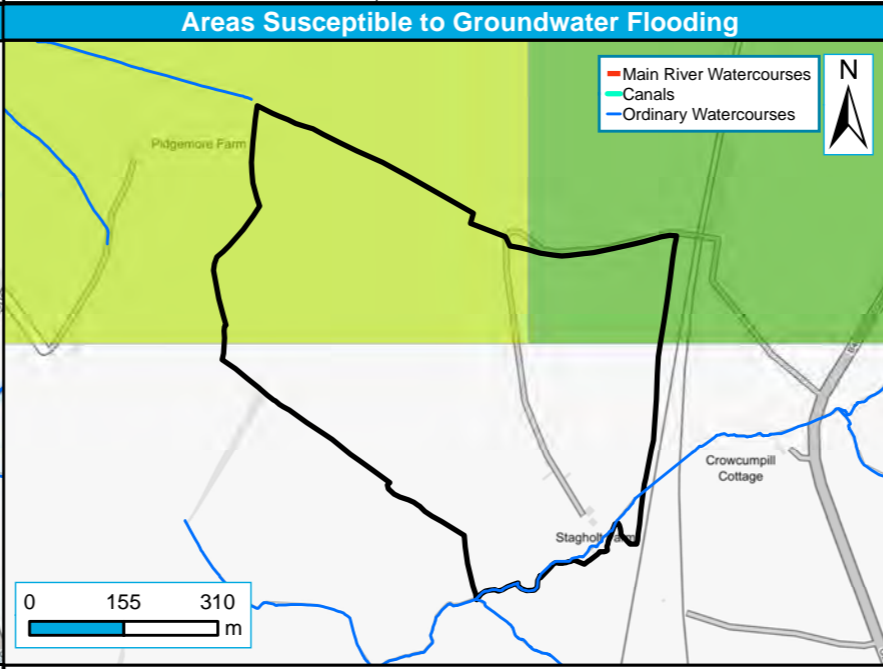
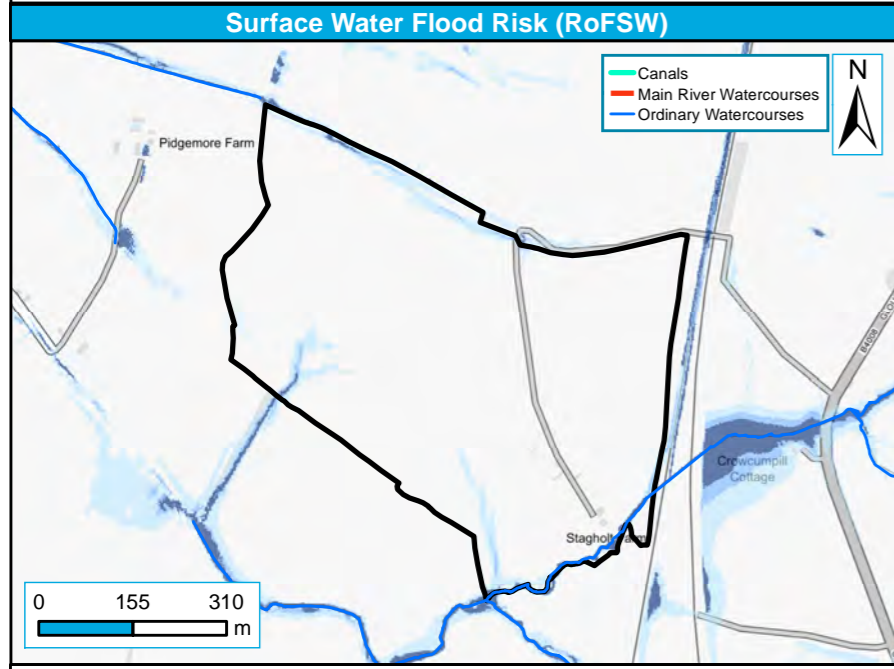


Level 2 Sites
 — Main Rivers
 — Ordinary Watercourses
 — Canal

Level 2 Sites
 — Functional Floodplain (1 in 20-year or 25-year event where available, or 1 in 100-year where not)
 — 1 in 100-year (1% AEP)
 — 1 in 1,000-year (0.1% AEP)

Level 2 Sites
 — 1 in 100-year (1% AEP)
 — 1 in 100-year (1% AEP) plus Climate Change*

*1 in 1,000-year (0.1% AEP) has been used as a proxy, while await 1 in 100-year + CC layer



Level 2 Sites
 — RoFSW 1 in 100-year extent (1% AEP)
 — RoFSW 1 in 30-year extent (3.3% AEP)
 — RoFSW 1 in 1000-year extent (0.1% AEP)

Level 2 Sites
 — Areas Susceptible to Groundwater Flooding >= 25% < 50%
 — >= 50% < 75%
 — < 25%
 — >= 75%

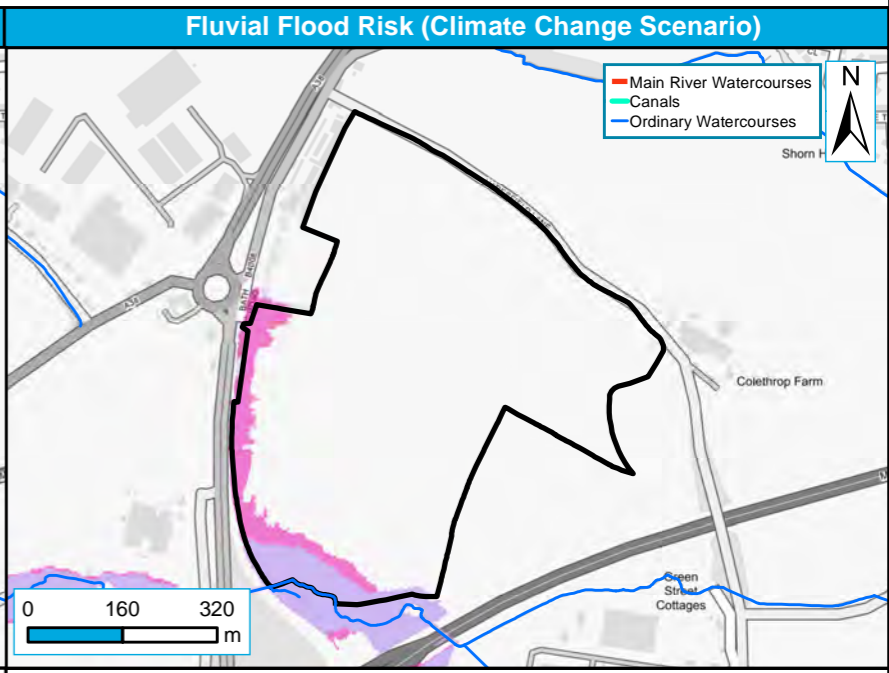
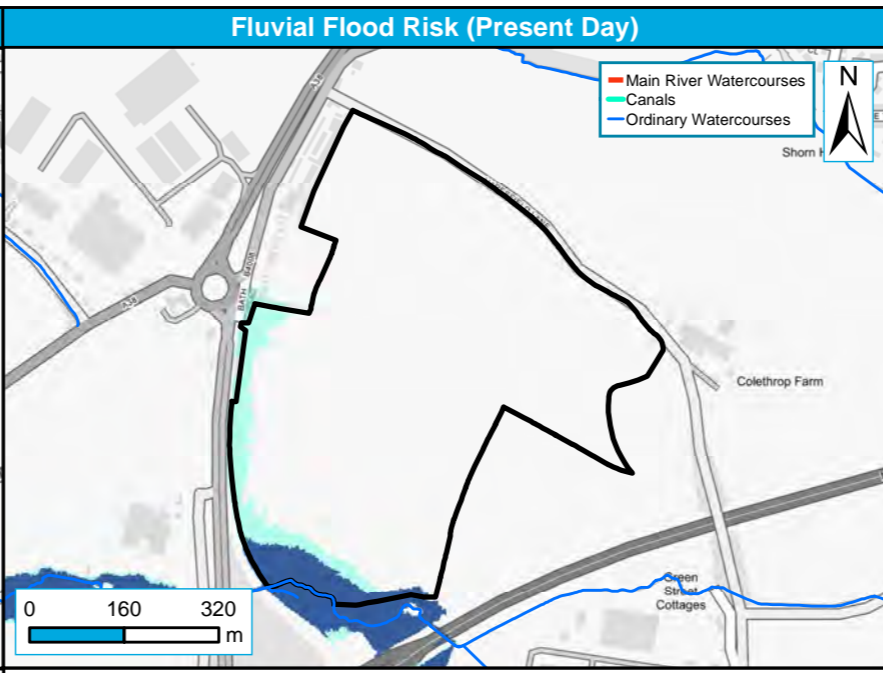
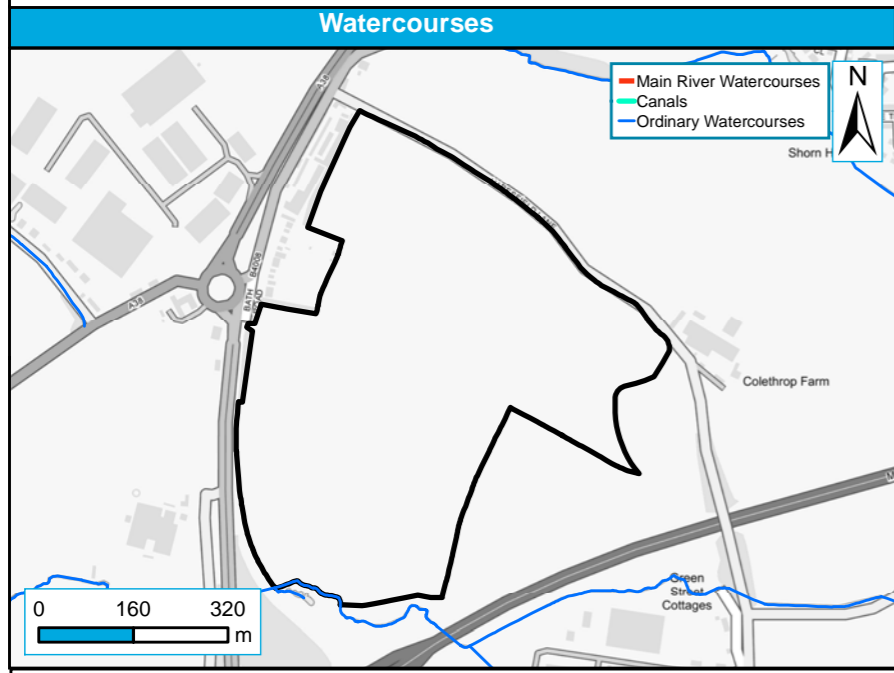
Level 2 Sites
 — Reservoir Flood Risk

Site reference	PS30
Site Name	Hunts Grove Extension

Stroud District Council Strategic Flood Risk Assessment Level 2 Detailed Site Summary Tables



Contains Ordnance Survey data © Crown copyright and database right 2019. Contains public sector information licensed under the Open Government Licence v3.0.

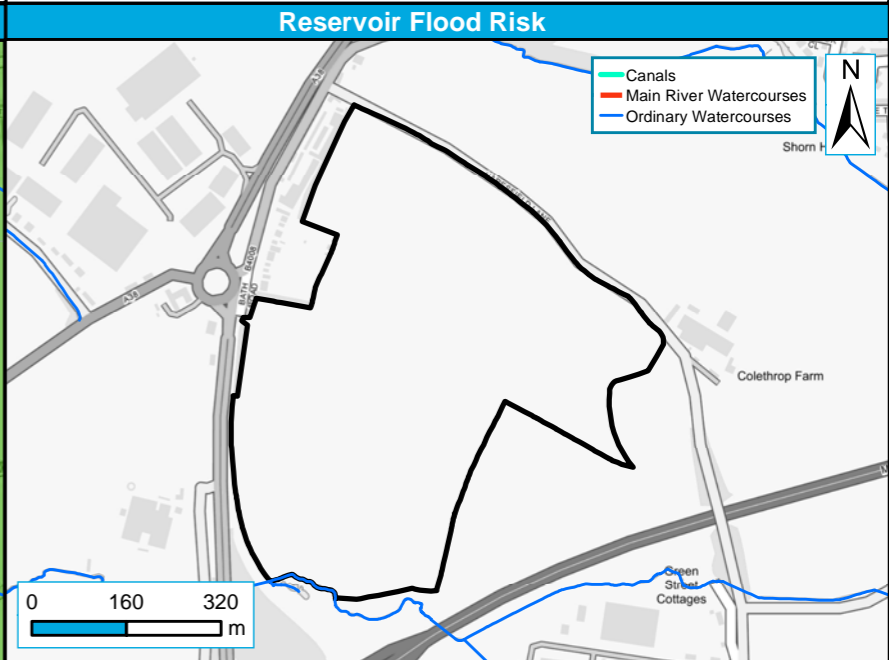
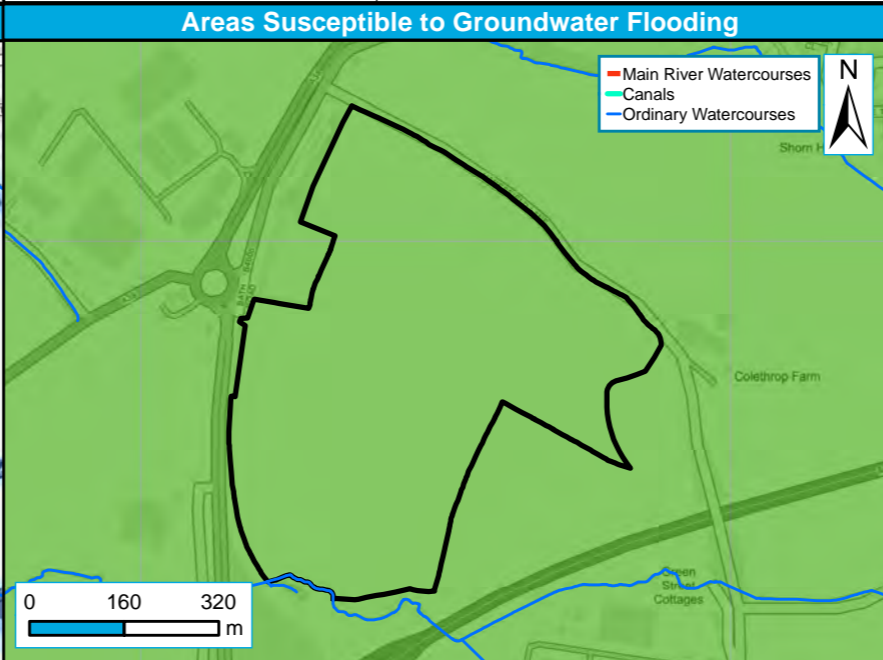
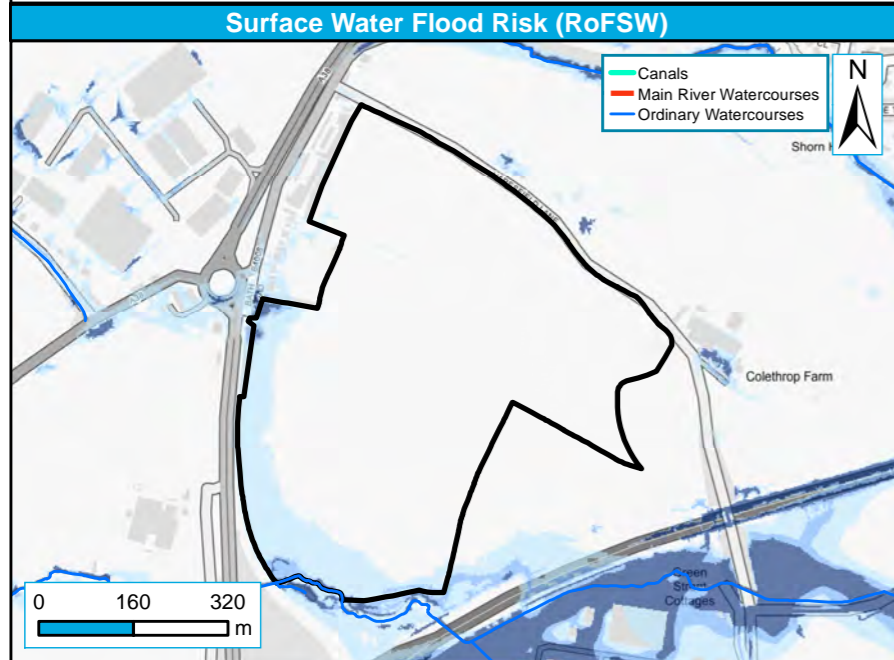


Level 2 Sites
 — Main Rivers
 — Ordinary Watercourses
 — Canal

Level 2 Sites
 Functional Floodplain (1 in 20-year or 25-year event where available, or 1 in 100-year where not)
 1 in 100-year (1% AEP)
 1 in 1,000-year (0.1% AEP)

Level 2 Sites
 1 in 100-year (1% AEP)
 1 in 100-year (1% AEP) plus Climate Change*

*1 in 1,000-year (0.1% AEP) has been used as a proxy, while await 1 in 100-year + CC layer



Level 2 Sites
 RoFSW 1 in 100-year extent (1% AEP)
 RoFSW 1 in 30-year extent (3.3% AEP)
 RoFSW 1 in 1000-year extent (0.1% AEP)

Level 2 Sites
Areas Susceptible to Groundwater Flooding

 < 25%	 >= 25% < 50%
 >= 50% < 75%	 >= 75%

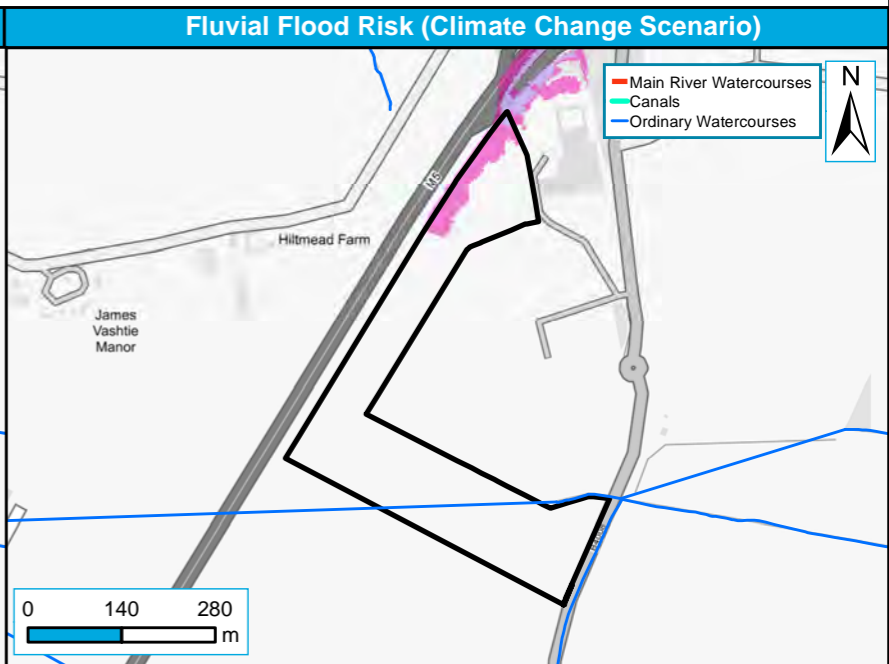
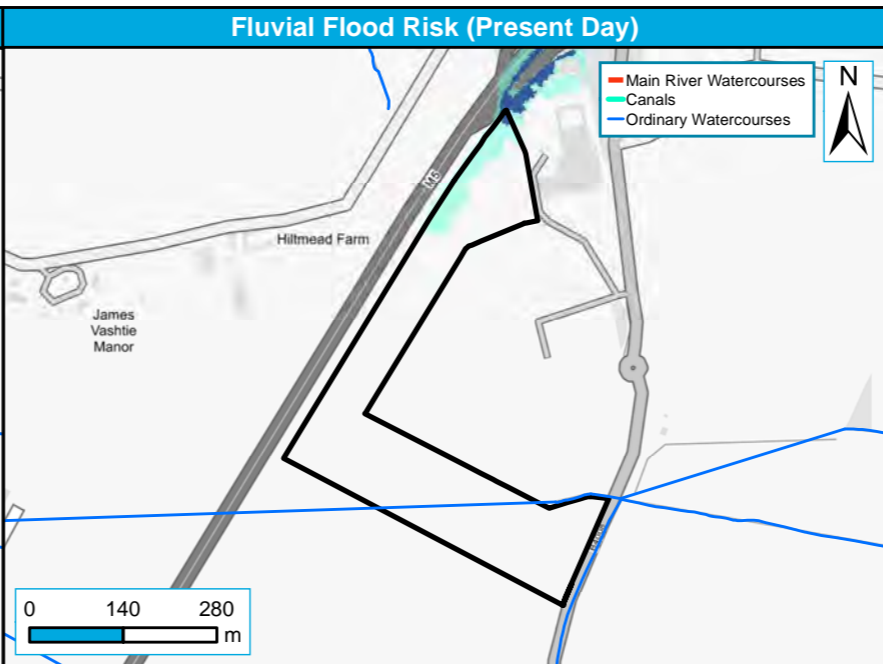
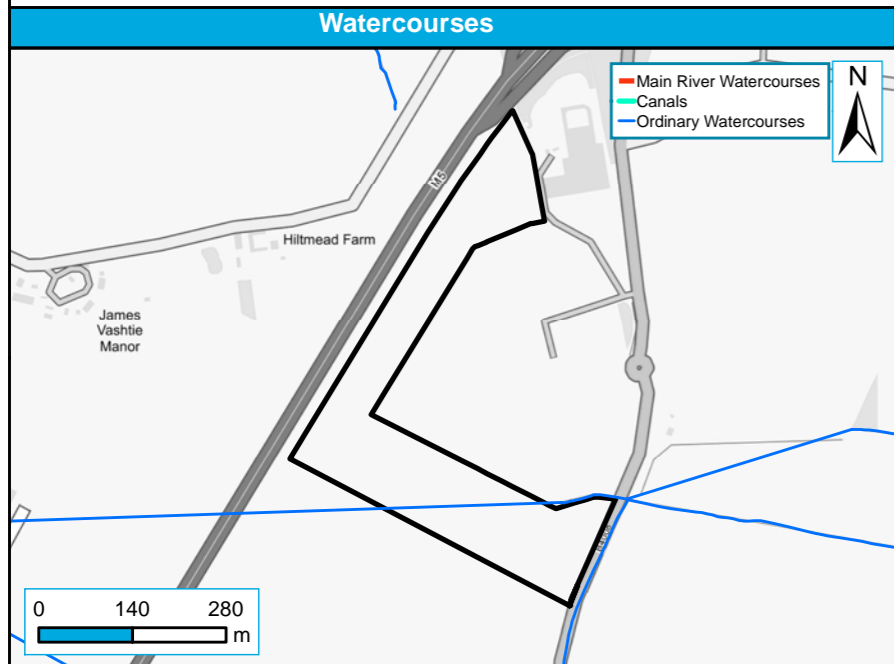
Level 2 Sites
 Reservoir Flood Risk

Site reference	PS43
Site Name	Javelin Park

Stroud District Council Strategic Flood Risk Assessment Level 2 Detailed Site Summary Tables



Contains Ordnance Survey data © Crown copyright and database right 2019. Contains public sector information licensed under the Open Government Licence v3.0.

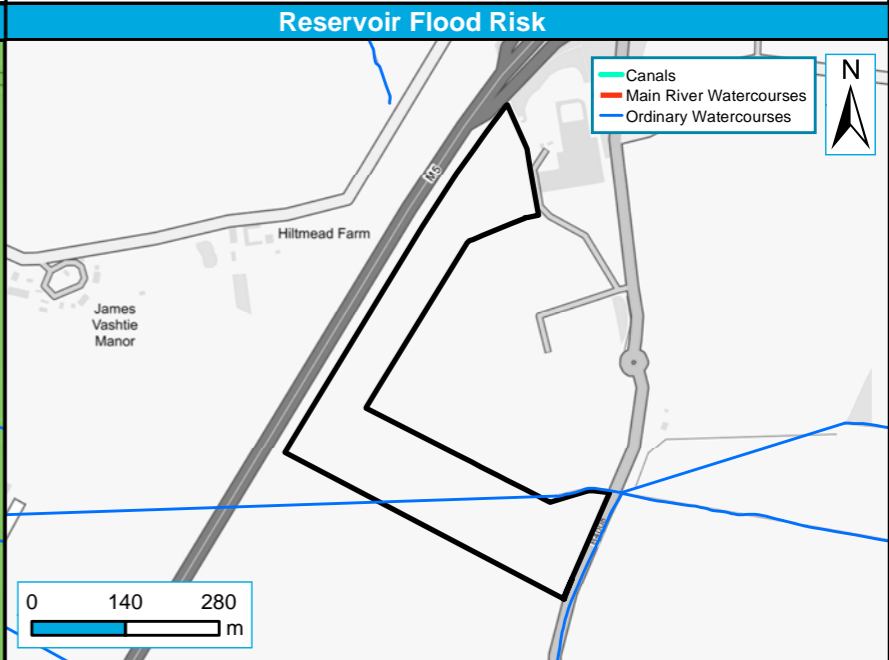
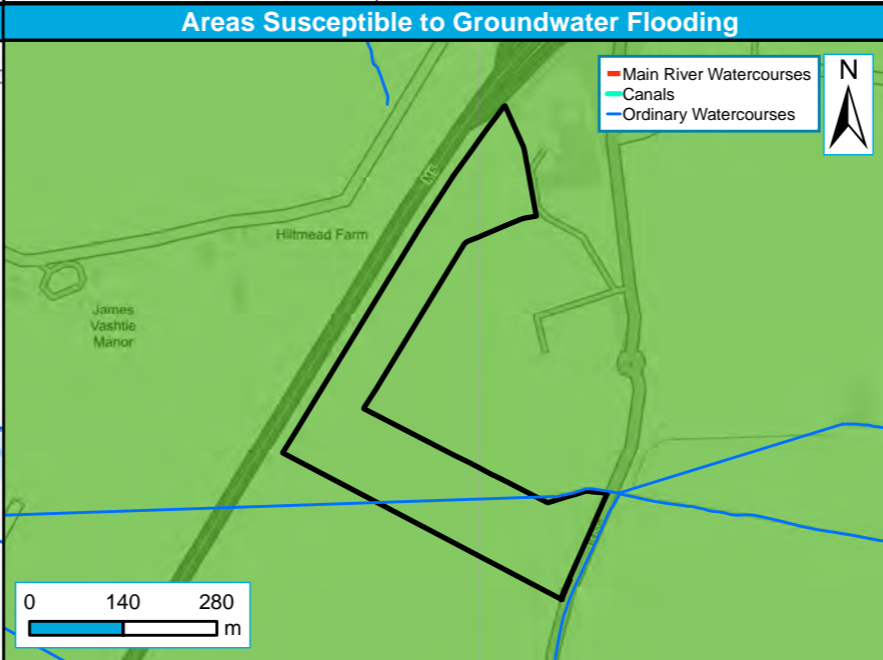
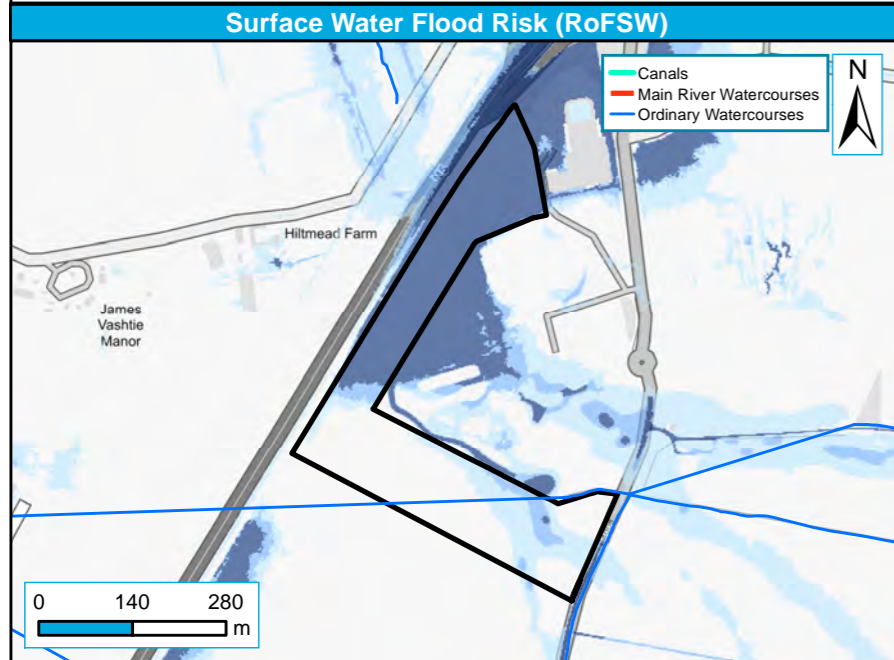


Level 2 Sites
 — Main Rivers
 — Ordinary Watercourses
 — Canal

Level 2 Sites
 Functional Floodplain (1 in 20-year or 25-year event where available, or 1 in 100-year where not)
 1 in 100-year (1% AEP)
 1 in 1,000-year (0.1% AEP)

Level 2 Sites
 1 in 100-year (1% AEP)
 1 in 100-year (1% AEP) plus Climate Change*

*1 in 1,000-year (0.1% AEP) has been used as a proxy, while await 1 in 100-year + CC layer



Level 2 Sites
 RoFSW 1 in 100-year extent (1% AEP)
 RoFSW 1 in 30-year extent (3.3% AEP)
 RoFSW 1 in 1000-year extent (0.1% AEP)

Level 2 Sites
Areas Susceptible to Groundwater Flooding
 >= 25% <50%
 >= 50% <75%
 < 25%
 >= 75%

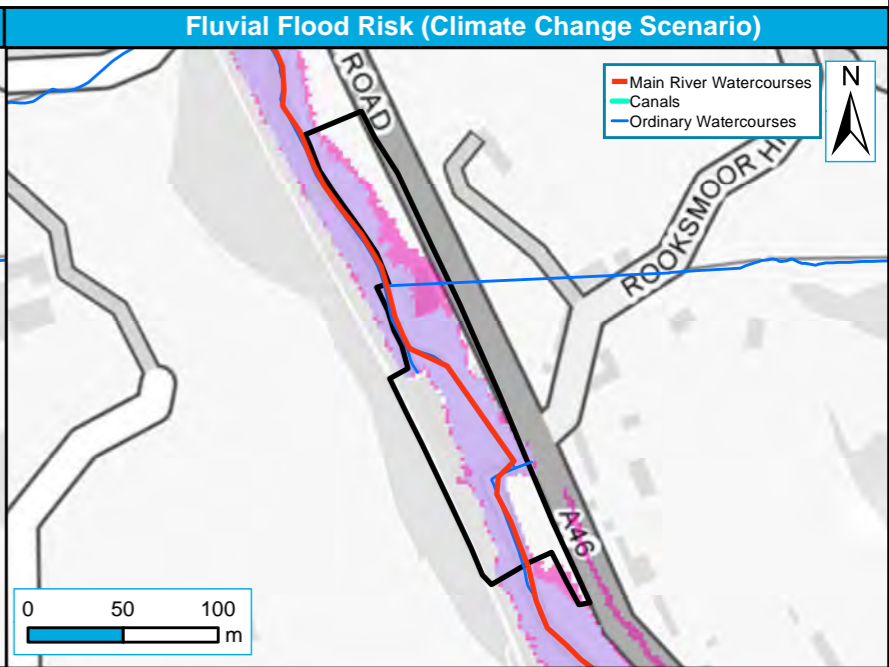
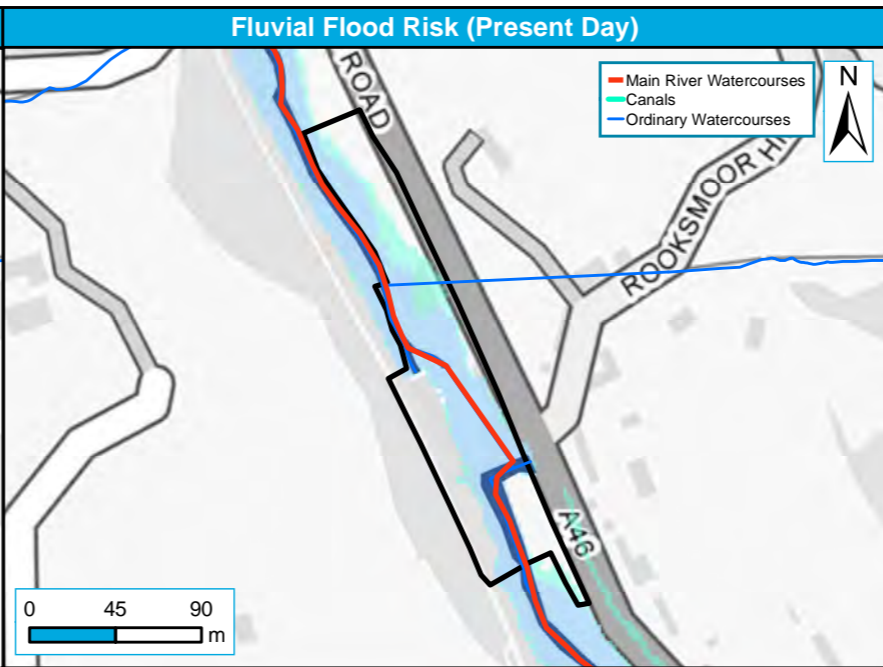
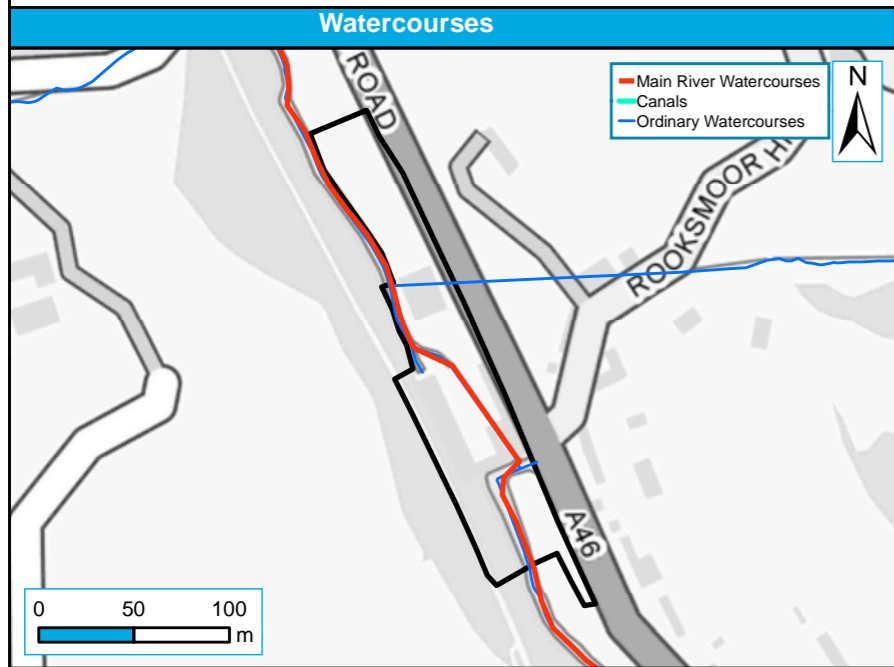
Level 2 Sites
 Reservoir Flood Risk

Site reference	PS09
Site Name	Rooksmoor Mill

Stroud District Council Strategic Flood Risk Assessment Level 2 Detailed Site Summary Tables



Contains Ordnance Survey data © Crown copyright and database right 2019. Contains public sector information licensed under the Open Government Licence v3.0.

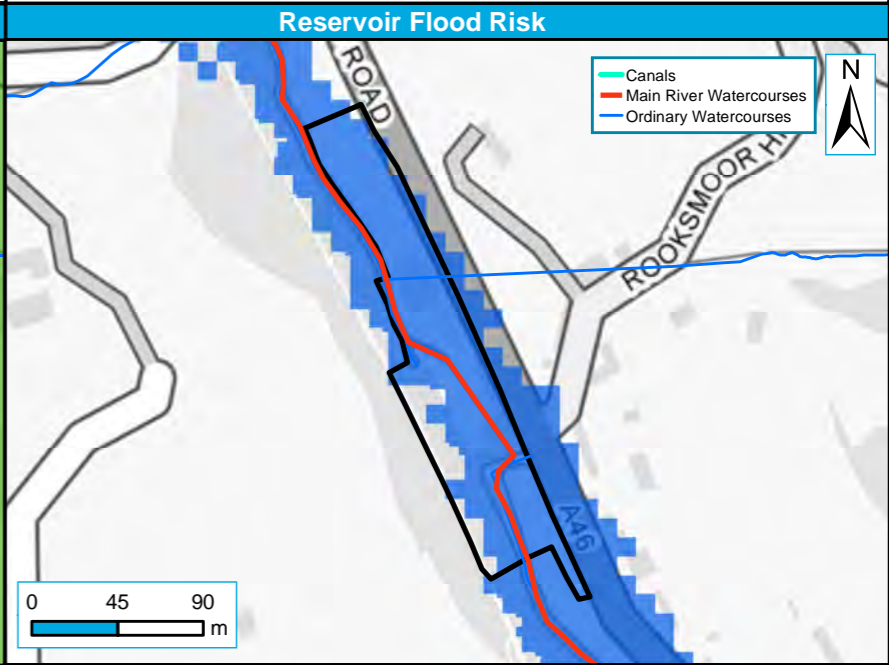
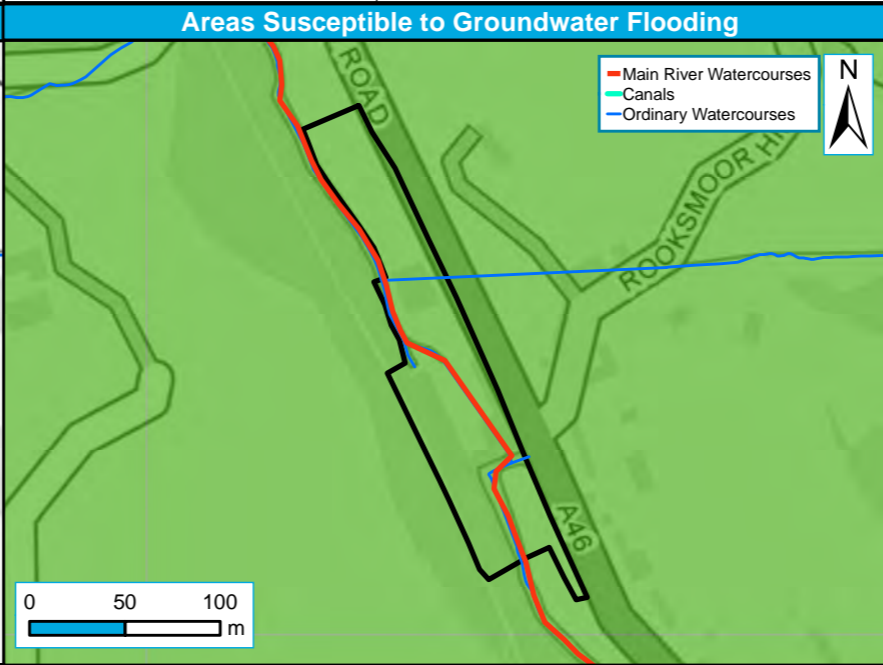
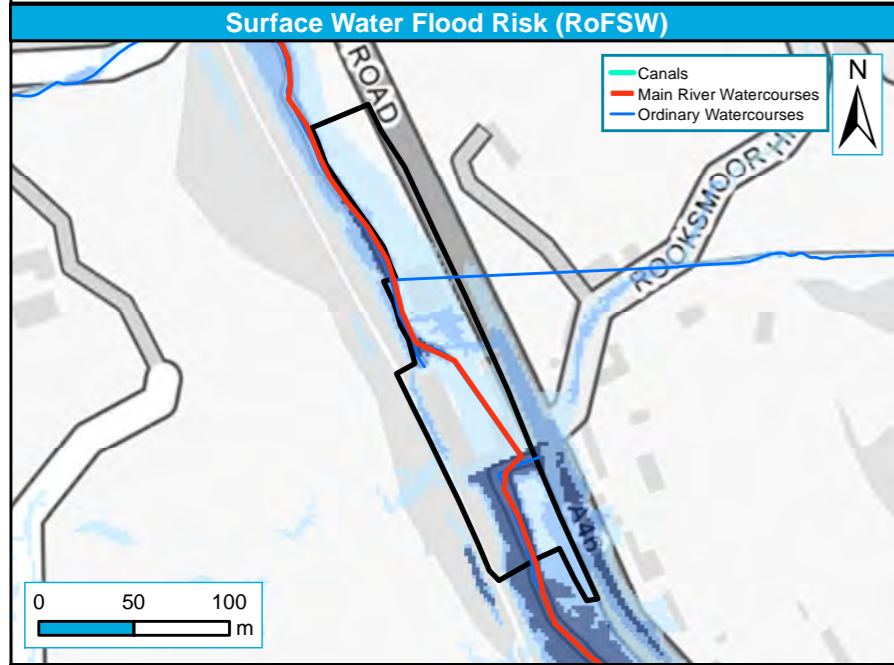


Level 2 Sites
 — Main Rivers
 — Ordinary Watercourses
 — Canal

Level 2 Sites
 Functional Floodplain (1 in 20-year or 25-year event where available, or 1 in 100-year where not)
 1 in 1,000-year (0.1% AEP)
 1 in 100-year (1% AEP)

Level 2 Sites
 1 in 100-year (1% AEP)
 1 in 100-year (1% AEP) plus Climate Change*

*1 in 1,000-year (0.1% AEP) has been used as a proxy, while await 1 in 100-year + CC layer



Level 2 Sites
 RoFSW 1 in 100-year extent (1% AEP)
 RoFSW 1 in 30-year extent (3.3% AEP)
 RoFSW 1 in 1000-year extent (0.1% AEP)

Level 2 Sites
Areas Susceptible to Groundwater Flooding

 < 25%	 >= 25% < 50%
 >= 50% < 75%	 >= 75%

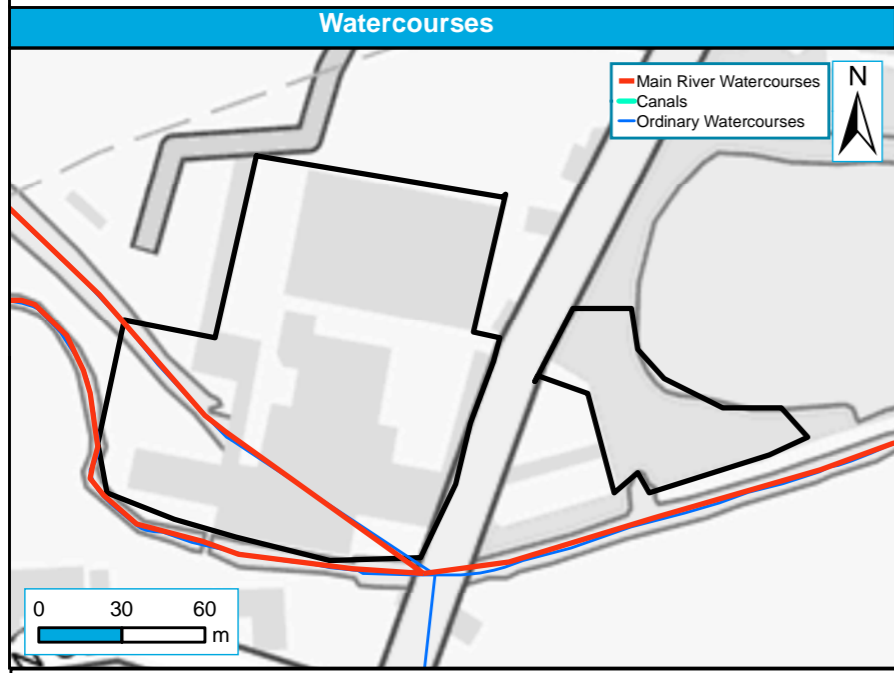
Level 2 Sites
 Reservoir Flood Risk

Site reference	PS14
Site Name	Stanley Mills

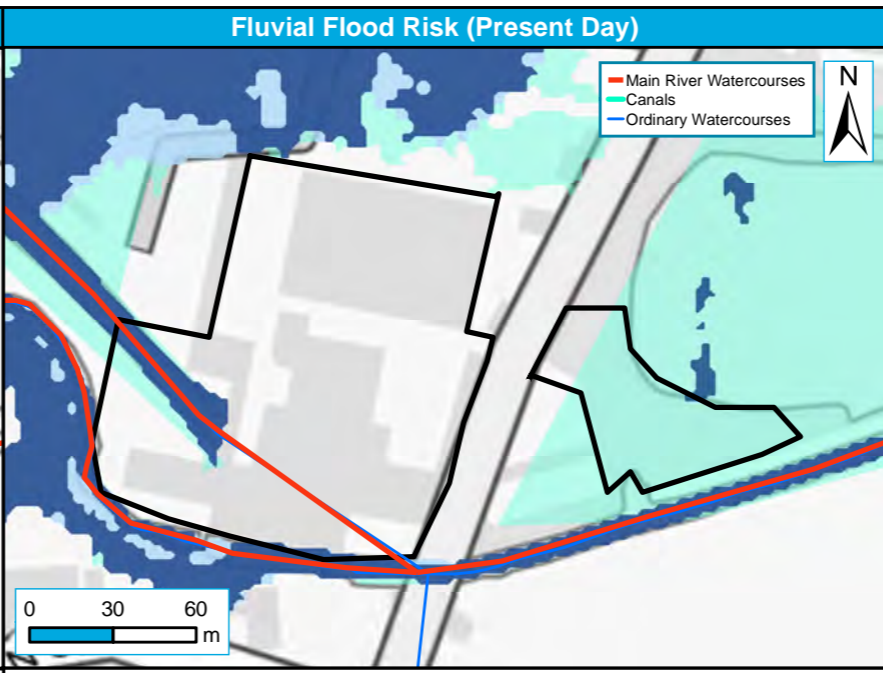
Stroud District Council Strategic Flood Risk Assessment Level 2 Detailed Site Summary Tables



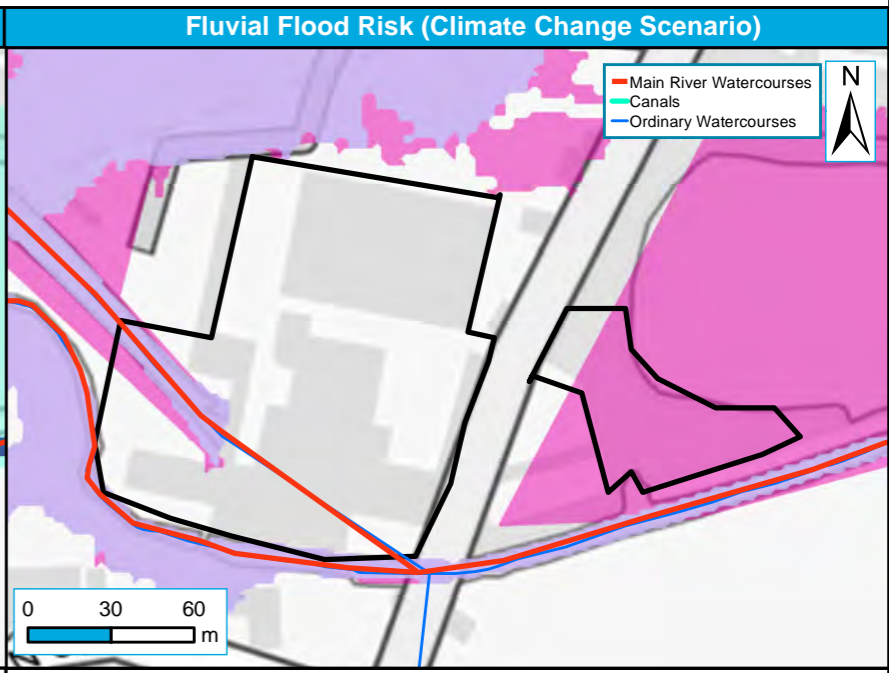
Contains Ordnance Survey data © Crown copyright and database right 2019. Contains public sector information licensed under the Open Government Licence v3.0.



Level 2 Sites
— Main Rivers
— Ordinary Watercourses
— Canal

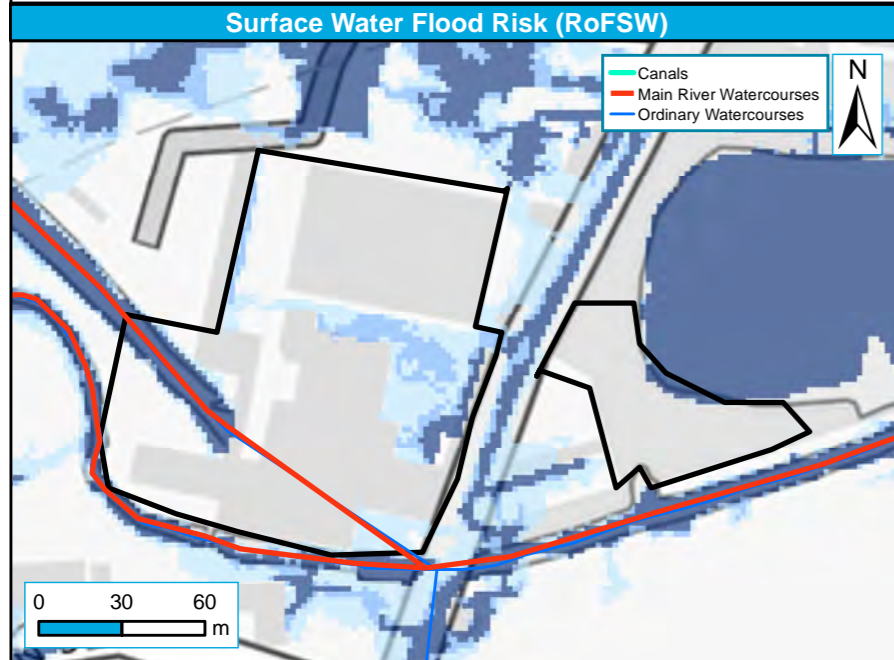


Level 2 Sites
■ Functional Floodplain (1 in 20-year or 25-year event where available, or 1 in 100-year where not)
■ 1 in 100-year (1% AEP)
■ 1 in 1,000-year (0.1% AEP)

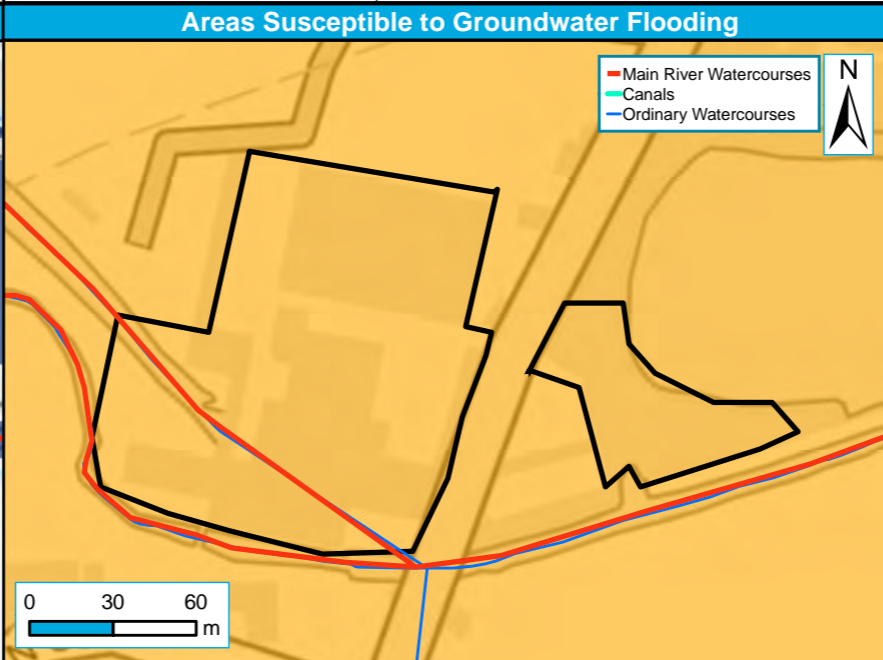


Level 2 Sites
■ 1 in 100-year (1% AEP)
■ 1 in 100-year (1% AEP) plus Climate Change*

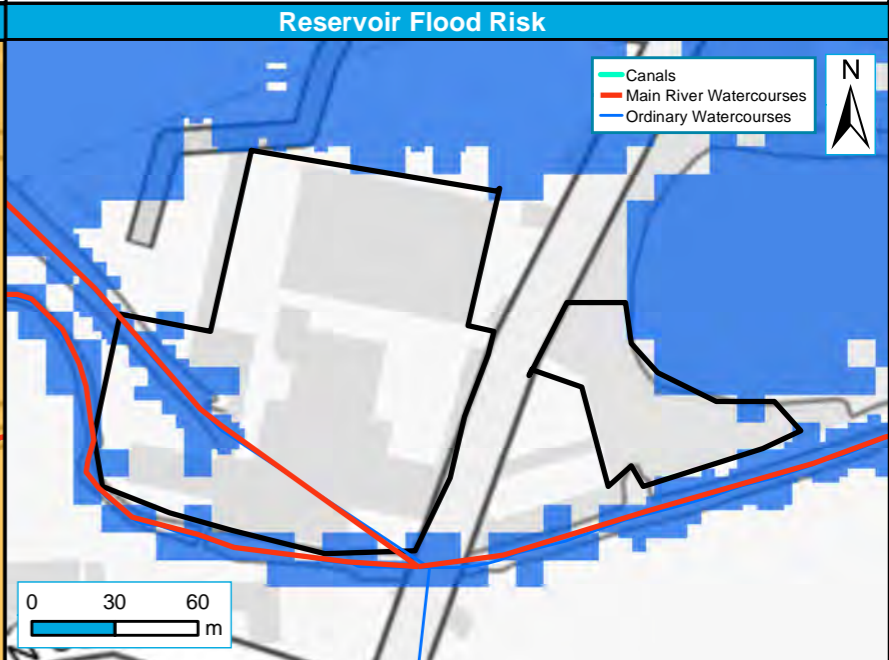
*1 in 1,000-year (0.1% AEP) has been used as a proxy, while await 1 in 100-year + CC layer



Level 2 Sites
■ RoFSW 1 in 100-year extent (1% AEP)
■ RoFSW 1 in 30-year extent (3.3% AEP)
■ RoFSW 1 in 1000-year extent (0.1% AEP)



Level 2 Sites
■ Areas Susceptible to Groundwater Flooding >= 25% < 50%
■ >= 50% < 75%
■ < 25%
■ >= 75%



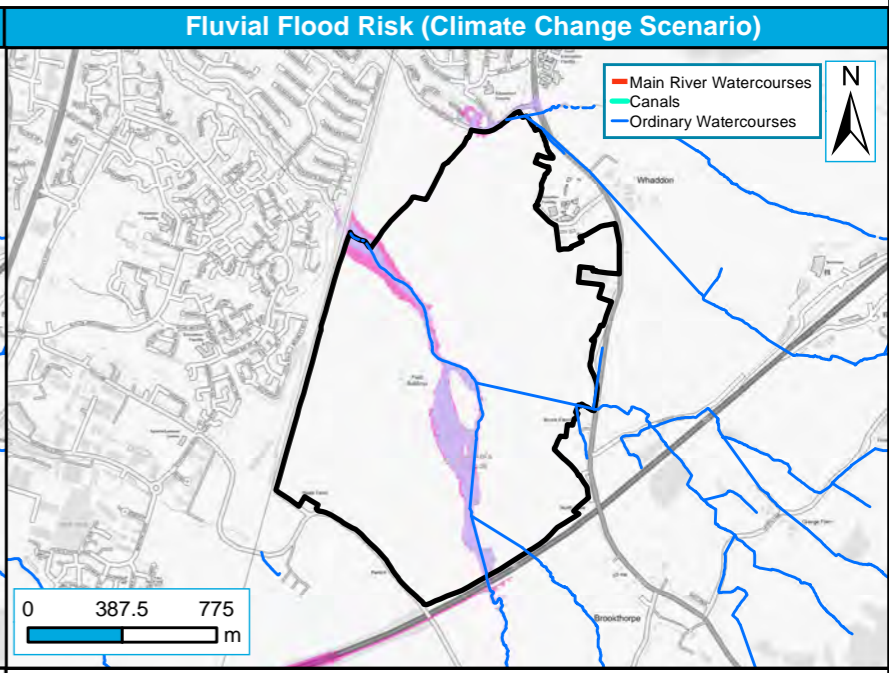
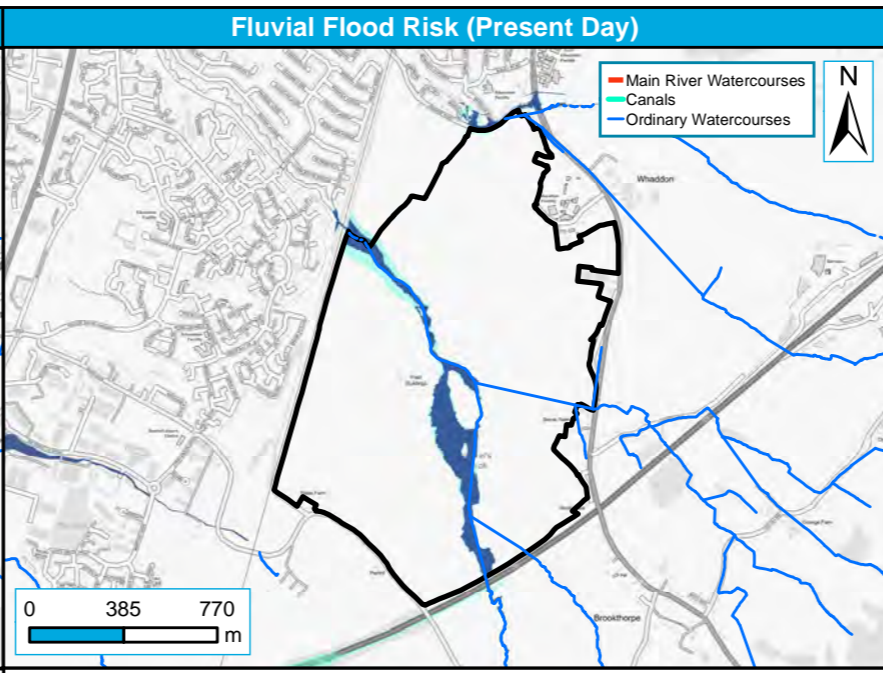
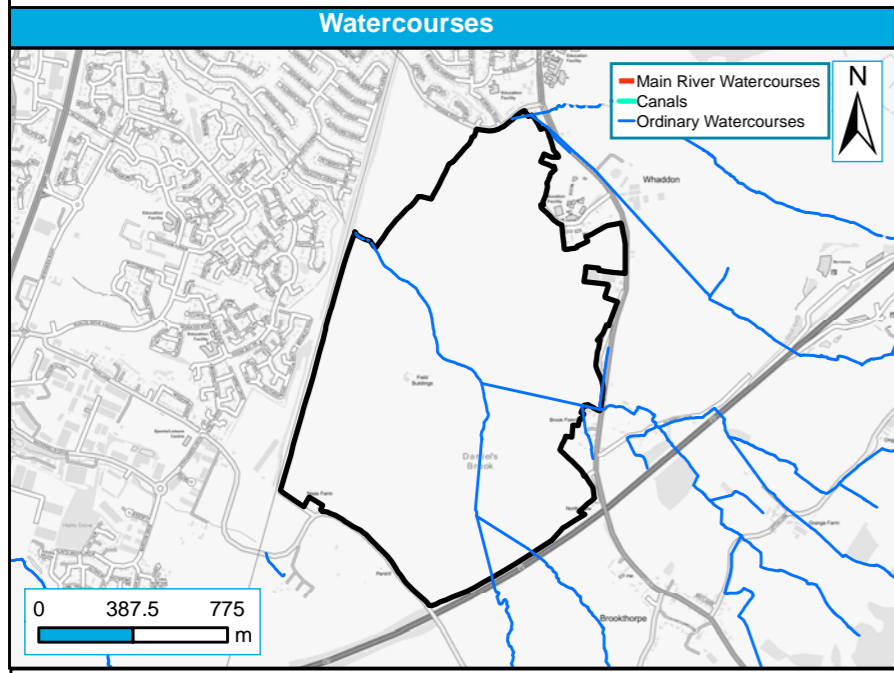
Level 2 Sites
■ Reservoir Flood Risk

Site reference	G2
Site Name	Land at Whaddon

Stroud District Council Strategic Flood Risk Assessment Level 2 Detailed Site Summary Tables



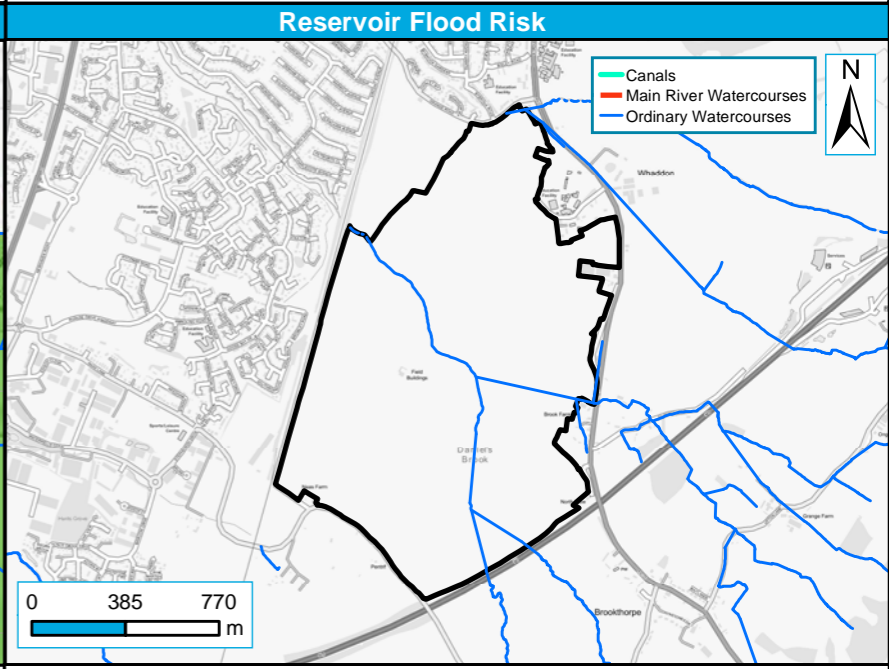
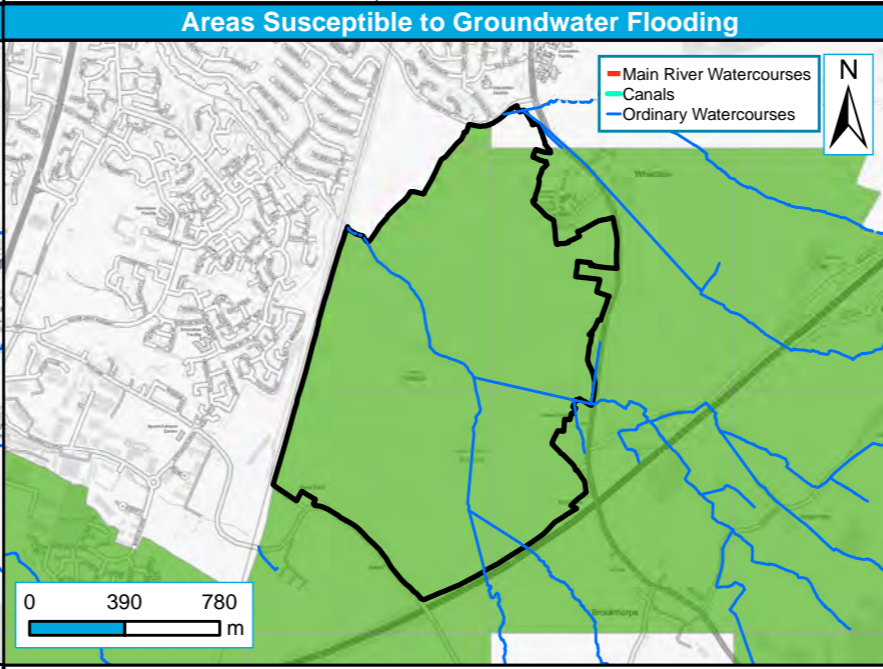
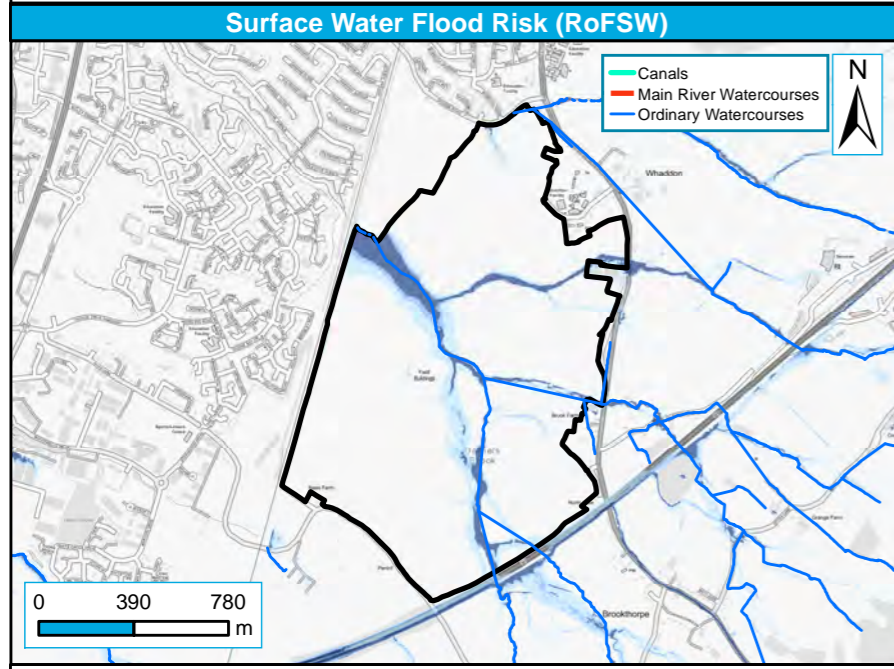
Contains Ordnance Survey data © Crown copyright and database right 2019. Contains public sector information licensed under the Open Government Licence v3.0.



Level 2 Sites
 — Main Rivers
 — Ordinary Watercourses
 — Canal

Level 2 Sites
 Functional Floodplain (1 in 20-year or 25-year event where available, or 1 in 100-year where not)
 1 in 100-year (1% AEP)
 1 in 1,000-year (0.1% AEP)

Level 2 Sites
 1 in 100-year (1% AEP)
 1 in 100-year (1% AEP) plus Climate Change*
 *1 in 1,000-year (0.1% AEP) has been used as a proxy, while await 1 in 100-year + CC layer



Level 2 Sites
 RoFSW 1 in 100-year extent (1% AEP)
 RoFSW 1 in 30-year extent (3.3% AEP)
 RoFSW 1 in 1000-year extent (0.1% AEP)

Level 2 Sites
Areas Susceptible to Groundwater Flooding
 >= 25% < 50%
 >= 50% < 75%
 < 25%
 >= 75%

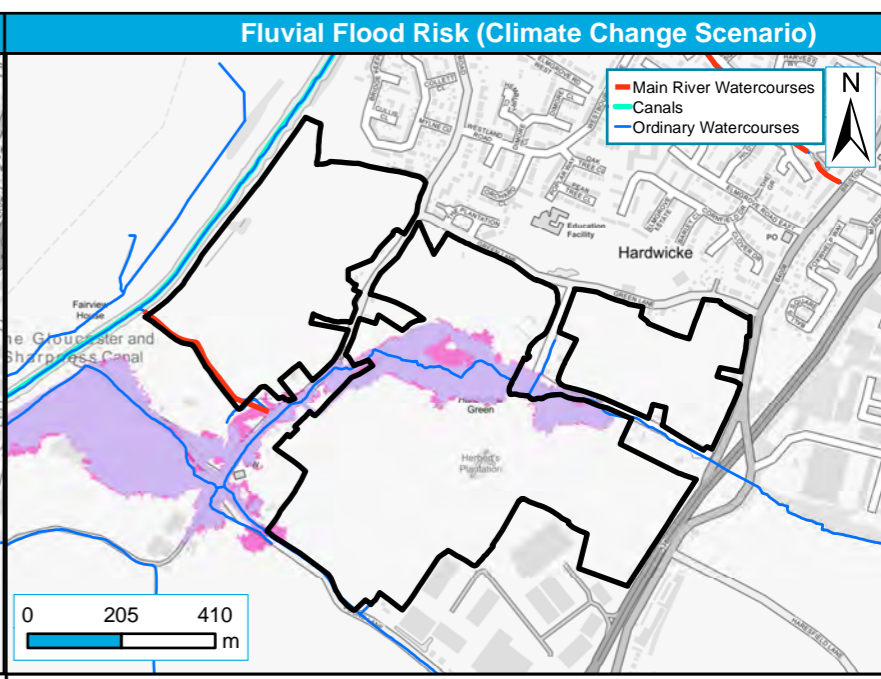
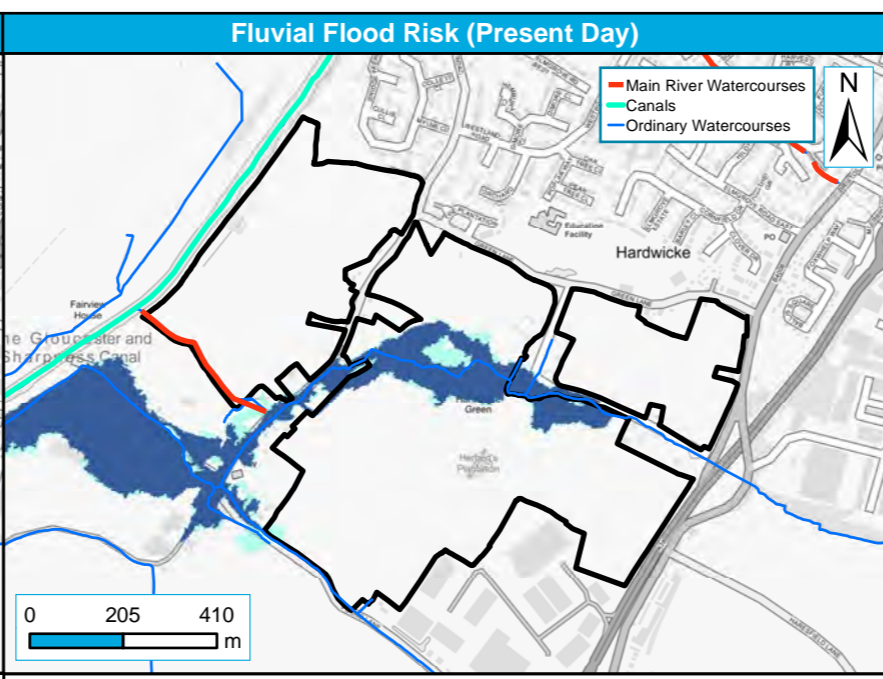
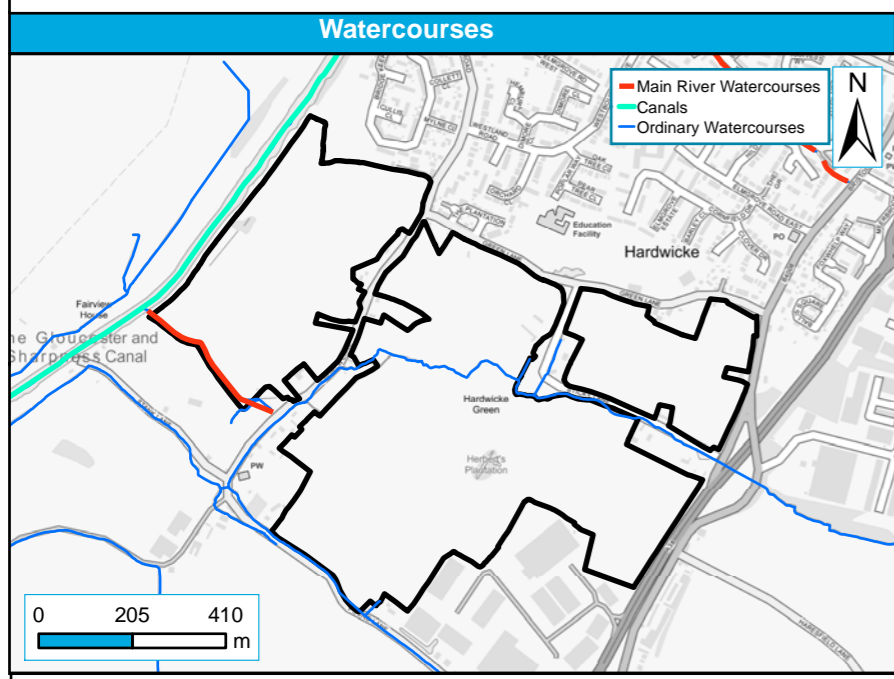
Level 2 Sites
 Reservoir Flood Risk

Site reference	G1
Site Name	South of Hardwicke

Stroud District Council Strategic Flood Risk Assessment Level 2 Detailed Site Summary Tables



Contains Ordnance Survey data © Crown copyright and database right 2019. Contains public sector information licensed under the Open Government Licence v3.0.

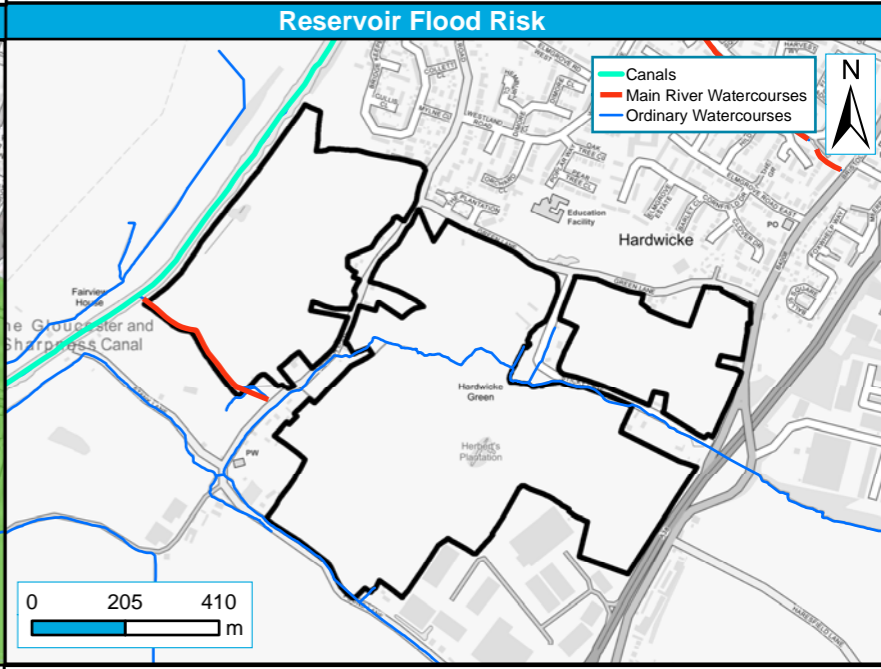
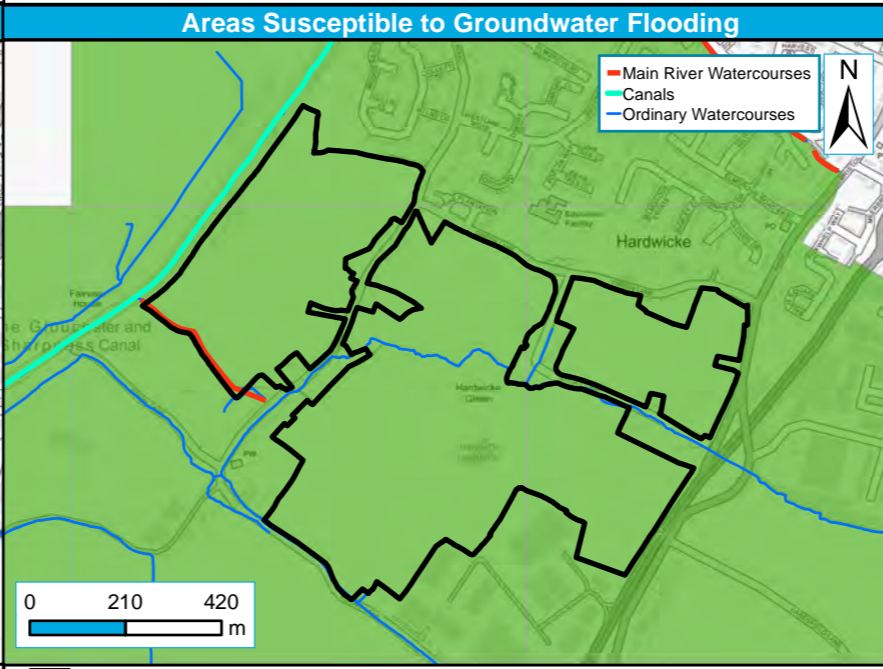
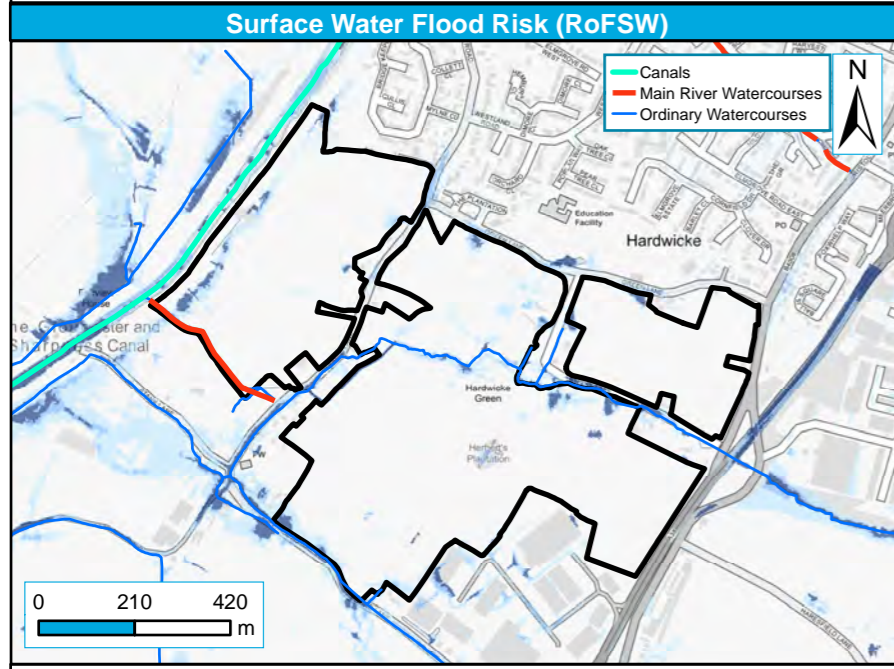


Level 2 Sites
 — Main Rivers
 — Ordinary Watercourses
 — Canal

Functional Floodplain (1 in 20-year or 25-year event where available, or 1 in 100-year where not)
 1 in 100-year (1% AEP)
 1 in 1,000-year (0.1% AEP)

Level 2 Sites
 1 in 100-year (1% AEP)
 1 in 100-year (1% AEP) plus Climate Change*

*1 in 1,000-year (0.1% AEP) has been used as a proxy, while await 1 in 100-year + CC layer



Level 2 Sites
 RoFSW 1 in 30-year extent (3.3%)
 RoFSW 1 in 100-year extent (1% AEP)
 RoFSW 1 in 1000-year extent (0.1%)

Level 2 Sites
Areas Susceptible to Groundwater Flooding
 >= 25% < 50%
 >= 50% < 75%
 >= 75%
 < 25%

Level 2 Sites
 Reservoir Flood Risk