

# SDC NEWS

**Improved leisure  
and wellbeing  
service for district**

**New homes vision  
for brownfield sites**

**Meet  
your new  
Community  
Officers**





## CONTENTS

- 3 New leisure service including free months membership offer
- 5 New homes in the pipeline
- 6 Meet our new Community Officers
- 7 Helping our Forces veterans
- 9 Junior eco warriors lead new project

## YOUR COUNCIL

Stroud District Council is lead by the Green Party, following election to all 51 SDC seats in May 2024.

## RULING ADMINISTRATION



Green

**Leader:** Councillor Catherine Braun  
**Deputy Leader:** Councillor Pete Kennedy

## OTHER PARTIES



Labour



Conservatives



Liberal Democrat

There will be an election for one vacancy on 1 May.

## ABOUT SDC NEWS

**SDC News** is delivered to every household in **Stroud District** to provide information about services available from the council. We hope that it will keep you informed of local developments and initiatives.

If you, or anyone you know, would prefer to receive a copy of this in large print, or another format, please email [customer.services@stroud.gov.uk](mailto:customer.services@stroud.gov.uk) or call **01453 766321**. This newsletter costs approx 28p per copy to publish and deliver to you.

SDC News is printed on Carbon Balanced Paper. Please place in your recycling box once you have read it.



Every effort is made to ensure the accuracy and reliability of the information in this publication. However, Stroud District Council will not be liable for any form of loss or inconvenience arising from information contained. Information is correct at time of going to print.



# Welcome from the Chief Executive

## Kathy O'Leary

Welcome to the 2025 edition of *SDC News*, the first since the local elections in May 2024 which saw 34 out of 51 brand new councillors elected to serve as your local representatives. Our councillors have worked to agree priorities for the council which are set out in our new Council Plan under five themes, which you can read more about on page 3. Following public consultation in the Autumn the Plan was adopted in February and we are now busy working to deliver it.

Housing is a new key theme and as you will see on pages 4 and 5 in this edition, we are working with partners to develop some important brownfield sites that will provide new homes, including an element of affordable housing, in attractive settings well-connected to local communities.

One of our biggest projects and most significant investments has been taking over

the direct running of our leisure centre in Stratford Park, Stroud, which you can read all about on page 3. There's more about our award-winning Stratford Park itself on page 8. Members of our newly badged Active Lifestyles centres in Stroud and Dursley can use the facilities and join in classes at both centres. There's a special offer if you'd like to look after your health and wellbeing. As a member myself, I'm delighted with some of the early feedback on the changes we have made, and we'll continue to ask people what else they would like to see and make further improvements.

We are working with neighbouring councils on local government reorganisation in Gloucestershire, although it is very much business as usual for us, working to provide value for money services that are important to you. I hope you will enjoy reading more about those in this edition.

## Second crowdfunder makes £135,000 available for community projects

Stroud Funding, launched in September 2024, is a community crowdfunding platform backed by funds from Stroud District Council and hosted by crowdfunding experts, Spacehive. In the first round all 17 projects successfully met their funding goals with 1,874 backers contributing £254,197 to community causes.



The Stroud Waters Project raised £37,379 for a feasibility study to create a natural outdoor community pool. Project director Amy Morris said: "I highly recommend Stroud Funding if you want to showcase a project idea to the community. I feel absolutely thrilled to have reached the fundraising target, am very grateful for this community initiative, and for Stroud District Council pledging £10,000 towards the project."

For 2025 Stroud District Council has a fund of £135,000 to pledge towards projects launching in Spring (by 7 May), and Autumn. Projects that align with council priorities, such as addressing environmental and climate change issues or building community resilience and wellbeing and demonstrate community support, could receive up to £10,000 (up to a maximum of 50% of their funding target) from the council's fund. The remaining funds will be pledged by the public and businesses.

This funding can cover entire projects or parts of them, such as feasibility studies, additional classes in existing programmes, and projects already part funded.

Find out more: [www.spacehive.com/movement/stroud](http://www.spacehive.com/movement/stroud)

# More people getting active

Since November 2024, when Stroud District Council took over the management and running of the leisure centre in Stroud, more people are enjoying the benefits of an active lifestyle.

The changes saw the council taking back the lease to the centre in Stratford Park and creating a new approach to leisure and wellbeing across the district. Rebranded as Active Lifestyles Stroud District, members of the service can enjoy both the site in Stroud and the former Pulse leisure centre, which is now called Active Lifestyles Dursley.

Under the Council Plan 2025 - 2029, the council has adopted a long-term investment plan for leisure services and facilities across the district to ensure everyone has access to good quality leisure opportunities that meet their needs.

"We want a leisure service for everyone living in our district and we have thought long and hard about what we want to provide," said SDC Head of Community Services, Angela Gillingham. "The changes at both our sites in Stroud and Dursley are just the beginning of our journey. This isn't just about a gym and swimming pool. We want everyone to be able to live a healthy and active lifestyle – whether that's a walk in the park or one of our Healthy Lifestyles classes, there should be opportunities for all."

In the last six months, a five year investment plan has been approved totalling £2.7million to improve our centre in Stroud. This will include



brickwork repairs, roofing, decoration, doors, flooring, air conditioning upgrades, lighting, and the external toilet block. There have also been improvements to the services offered, with twenty new classes being introduced across both sites. Staff have undergone extensive training, and there are plans to increase the number of staff at the Stroud centre to further improve the programme and services available.

The investment also includes work on the 89-year-old Lido at Stratford Park including repairing the Lido 'tank' and replacing the pumps and plant. There are also plans to use excess energy from the newly installed leisure centre air source heat pump system to increase the Lido temperature by an estimated 3 to 5 degrees centigrade.

Elsewhere on at the Stroud site, changes have included the new, improved café – Stratford Perk – which serves healthy, locally sourced food and barista-style coffee. Just outside the café, a new play area has also opened. The £89,000 investment has transformed the play area, introducing new, sustainable and fully accessible equipment.

Find out more about memberships: [www.myactivelifestyles.co.uk/membership](http://www.myactivelifestyles.co.uk/membership)



Membership offer

Bring this token in to **Active Lifestyles Dursley** or **Active Lifestyles Stroud** when you sign up for a year's membership, and get a 13th month free-of-charge.

Find out more about memberships: [www.myactivelifestyles.co.uk/membership](http://www.myactivelifestyles.co.uk/membership)



## New Council Plan

The **SDC Council Plan** is the council's vision for the future and outlines **five** strategic priorities:

### Environment, Climate and Nature

Working towards making Stroud District net zero and nature friendly, with a sustainable economy and communities that are well prepared for the impacts of the climate crisis.

### Communities and Wellbeing

Working to reduce health inequalities, support community hubs, enhance leisure services and cultural opportunities, work with young people and to champion equality, diversity, inclusion and equity in all that we do.

### Local Economy

Supporting a thriving local economy that provides opportunities for businesses and residents and securing the infrastructure that will enable our future net zero economy.

### Housing

Improving access to quality, affordable and energy efficient housing that is good quality, energy efficient, safe and fit for purpose.

### Working for our Communities

Strengthening our role as a responsive and efficient council which actively supports our residents.

Following an extensive consultation period towards the end of 2024, responses were thoroughly analysed and considered, and amendments made. The revised plan was approved at Full Council in February 2025.





## Visitors encouraged to discover Stroud district by train

A series of posters has appeared at railway stations, inviting rail travellers to explore the Stroud district.

Stroud District Council's Planning Strategy service commissioned local artist Isabella Fay to create the posters which aim to encourage visitors to travel to the district by train and inspire locals to discover new places.

Running through April and May, the campaign showcases highlights of the Stroud district, including Stroud Farmers' Market, the Stroudwater Navigation Canal, and the expansive commons.

Each poster features a QR code that links to a dedicated page on the Visit Stroud website, providing tourists with detailed information about attractions and events in the area.

Isabella Fay said, "I'm so excited to see the posters up – it's been great to work on such a lovely project so close to home."

One of the key priorities in the Council Plan is promoting Stroud district as a sustainable tourism and visitor destination.

Find out more on the Visit Stroud website [www.visitstroud.uk/GWR](http://www.visitstroud.uk/GWR) Isabella Fay can be found on Instagram [@isabella\\_fay](https://www.instagram.com/isabella_fay)

Photo: Simon Camper

# Community infrastructure benefits for all

**M**ore than £700,000-worth of improvements have been completed since 2020 in the district thanks to the Community Infrastructure Levy (CIL), with more than £1.2million worth of projects on the way.

CIL is a charge paid by developers to fund infrastructure projects, addressing the increased demand on the local environment, facilities and services caused by new housing developments.

### Funded projects include:

#### **£25,000 towards SGS College 14-16 Create Centre**

Establishment of an innovative education facility specifically for 14 to 16 year olds who struggle with mainstream education. Accommodating up to 200 students, the centre provides an aspirational, supportive and flexible curriculum with learners' needs at its heart.

#### **£52,500 towards Nailsworth drainage improvement scheme**

Significant upgrading of highways and drainage infrastructure in the Nailsworth area to help prevent serious flooding, as was experienced in 2020 when 38 businesses and eight homes were badly affected.

#### **£170,000 towards the Berkeley Community Hub**

Based on the site of the old Library, the new multi-service 'Community Hub' building will offer a wide range of much needed health and wellbeing services to the community.



#### **£191,000 towards improved cycle trails – Dudbridge to Ryeford (£75,000) and Stroud to Nailsworth (£116,000).**

The cycle trails that connect our towns are popular off-road routes. Large sections have been resurfaced and made wider, and the refurbishment of bridges has ensured the tracks remain safe.

#### **£66,759 towards a new catering kitchen and toilets at the Sub Rooms, Stroud**

New upgraded facilities at the Sub Rooms will address the increased demand and support large events. The new kitchen will minimise reliance on expensive equipment hire and repairs, while enhancing hygiene standards.

### Current projects include:

The expansion of a primary school, new state-of-the-art 3G sports facilities at a secondary school, a study to plan for increased healthcare provision at a doctor's surgery, improvements to the Merrywalks transport hub, and environmental initiatives to improve water quality and biodiversity.



# Vision for new town centre homes

**S**troud District Council has a vision for new Stroud town centre homes at Cheapside.

Creating new energy-efficient homes on brownfield land is a council priority and the latest plans are to develop two sites near Stroud railway station. It is hoped that the development would also bring about much needed improvements to the railway station.

Working with partners, the vision is to create new homes, better access to the railway station, the canal and the town centre. The development would also bring investment to improve the public spaces in and around the station area, creating a better experience for people arriving in the town.

The areas earmarked are land between the Hill Paul building and Wallbridge, and Cheapside car park. The council will carefully consider the parking needs for the town and the station in the development and planning process.

The council approved the first stage of the development on 3 April. Following further investigations, a report will be presented in the Autumn, after which



the developer selection process will start. A community consultation will be held once a developer is chosen. SDC is working with partners including Network Rail, Great Western Railway,

London and Continental Railways, Stroud Town Council, Gloucestershire County Council, Stroud Valleys Canal Company and Stroud and District Chamber of Trade and Commerce.

## NEW HOMES FUND

**B**rownfield sites will become space for 44 new affordable homes after Stroud District Council awarded contracts worth £11.75million for their construction across the district.

Construction is set to start in Spring 2025, with completion anticipated between March and September 2026.

The council has secured £371,000 from HM Government through the Brownfield Land Release Fund (BLRF2) to support the demolition of the sites.

£1.82million towards the costs of construction at Cambridge Avenue has been funded by the Homes England Affordable Homes Programme 2021-26

which aims to deliver up to 180,000 new homes across England, providing a mix of social rent (usually the lowest rents, set using a government formula), affordable rent (no more than 80% of local market rent), shared ownership, and rent to buy options. This initiative is part of the government's commitment to increase the supply of affordable housing and support more people in accessing a home of their own.

**The projects will see the development of:**

- **Eight homes** for affordable rent on the former council house site at Gloucester Street and Bradley Street in **Wotton-under-Edge**
- **Thirteen homes** for social rent on the site of a former sheltered housing scheme at Cambridge Avenue in **Dursley**

- **Twenty-three homes** for affordable rent and shared ownership on the site of a former sheltered housing scheme at **Glebelands, Cam**



Artists impression of the new development at Glebelands

The delivery of affordable housing is a key council priority, as it has a significant shortage of affordable homes. The contract has been awarded to developer Speller Metcalfe. The 3 projects support several objectives in SDC's Council Plan including to build affordable, energy efficient homes and deliver key regeneration sites across the district, especially brownfield sites.



# Meet our new Community Officers

**Stroud District Council is proud to announce the launch of six new Community Officers, dedicated to serving and strengthening our local communities.**

The team will play a crucial role in ensuring the safety and wellbeing of residents across the district. The roles replace the previous Neighbourhood Wardens and the officers will take on new responsibilities. Our existing Neighbourhood Wardens Carol, Andy and Matt B have all transferred to the new role and have been joined by Dom, Mark and Matt C.

Over the coming months they will be introducing the new role to our communities through places like the Community Hubs, offering advice and support to some of the most vulnerable people in the district. They will also be out and about within our communities, aiming to reduce anti-social behaviour and making people feel safer.

Part of their role is to respond to community requests, including reports of fly-tipping or abandoned vehicles and one of the new officers, Matt Brisland, said he is looking forward to making our district a place everyone is proud of: "The team and I have been working hard over the last few months to understand our district and the problems people have been facing. We know graffiti is something that annoys many people and can be an eyesore. As such, we've been working on a project



which aims to clean up the graffiti and whilst we are there, also make that area look even nicer. We will be talking to community groups over the coming months to bring this project to life across the district."

The Community Officers will also work with other agencies, including the police and the health service to support community safety work. They will also be responsible for installing and maintaining the council's Careline services.

Dom, one of the Community Officers serving the south of the district, says he enjoys seeing the difference they make: "Every day is different in this role but the part I enjoy most is meeting our residents and helping them to feel safe and confident in their homes. The Careline service is a lifeline for so many and can make a difference to people's independence."

**Find out more about our new Community Officers at:**  
**[www.stroud.gov.uk/CommunityOfficers](http://www.stroud.gov.uk/CommunityOfficers)**



## Council staff raise funds for Longfield Hospice

**Council staff and councillors raised £2,357 for Longfield Hospice which was chosen as their Charity of the Year for 2024/25.**

"Longfield was a fantastic charity to support, offering some imaginative fundraising opportunities to raise money towards the £4million it needs to operate annually," said SDC Charity Group chairs Rachael Lythgoe and Louisa Sanderson.

The council's Charity Group held a summer fair at Longfield's gardens, staff participated in the Longfield annual 5km colour run, and baked cakes to raise funds.

Each year, council employees and councillors nominate and vote for a local charity to support. Past recipients include Stroud Women's Refuge, Cotswold Dogs and Cats Home, Sunflowers Suicide Support, and Severn Area Rescue Association.



# New walking routes mark the town's history



**A** new information plaque has been installed in Stroud, linking two of the town's oldest landmarks. The plaque features a map marking out two walking routes between the Blackboy Clock and statue in Castle Street, and the recently restored Anti-Slavery Arch in Paganhill.

The Blackboy Clock and statue, made at the height of the Transatlantic slave trade, has been located on several buildings in Stroud before it was moved to Blackboy House, where it remains today. Meanwhile, the arch, built in 1834 to commemorate the abolition of slavery in the British Empire in 1833, is the UK's oldest anti-slavery memorial.

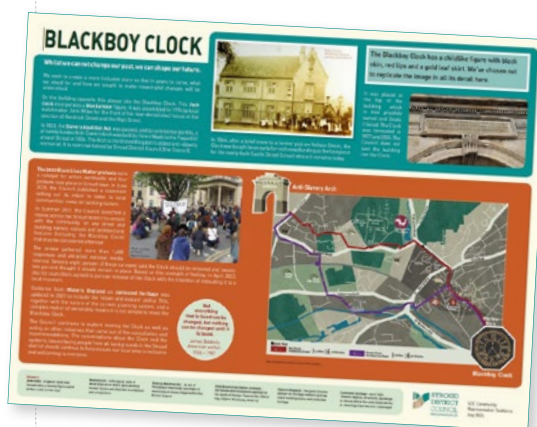
It has recently undergone a £42,000 restoration, commissioned by Stroud District Council, which included essential repairs to the stonework and specialist cleaning.

The new plaque, located in Castle Street, was designed by a student from SGS College School of Art, and was commissioned following a review in 2021 of street and building names, statues, and architectural features that may be considered offensive. The review received more than 1,600 responses, with 78% of respondents saying the Blackboy Clock and statue should be removed. However, as the clock and statue are privately owned, the council

does not have any legal authority to remove them.

As such, the council brought together a Community Representation Taskforce to develop a community-led project that celebrates Stroud district as a welcoming and inclusive place to live, work, and visit. The Taskforce suggested the idea of the plaque and walking routes to link both sites in the town.

Taskforce member Dan Guthrie said: "Myself and my fellow Taskforce members hope that this plaque provides a greater context for the history of the Blackboy Clock at street level where previously there was no information available. The plaque is a step forward in what we feel is the right direction for what should happen with this item of public statuary in our district but is certainly not the end of what continues to be an ongoing conversation."



## SDC working with Armed Forces veterans

Stroud District Council is dedicated to strengthening ties with the armed forces community. As a signatory of the Armed Forces Covenant, SDC has established an Armed Forces Champion Group of elected councillors and officers, which regularly meets with local veterans' organisations.

Support offered by the council includes guaranteed face-to-face interviews to discuss housing options, homelessness, and council tenancy issues. Additionally, the council's leisure service, Active Lifestyles Stroud District, offers 20% off activities and gym memberships at both Dursley and Stroud centres with a military or veteran ID card.

Recently, the council produced a film featuring local veterans discussing their service careers and the challenges they face transitioning to civilian life. This film is being used to help council staff better understand veterans' needs and has been shared with organisations nationwide.

Last year SDC helped find a new Poppy Appeal coordinator for Stroud just in time for the annual Royal British Legion Poppy Appeal. Anyone interested in helping with the Poppy Appeal this year can get in touch at [stroud.poppy@hotmail.com](mailto:stroud.poppy@hotmail.com)

Find out more at [www.stroud.gov.uk/veterans](http://www.stroud.gov.uk/veterans)







## Canal volunteering opportunities

**D**o you want to make a difference in your local community? Charities within the Cotswold Canals Connected (CCC) partnership are looking for new volunteers just like you.

CCC, led by Stroud District Council and the Cotswold Canals Trust, brings together different organisations involved in preserving the history, and building the future, of the Stroudwater Navigation canal. The canal was central to the development of our district historically and is a much-loved place at the heart of the community again today.

Volunteers involved with the different charities shape and carry out the work to restore the canal, enhance biodiversity and engage people in the canal's history and natural heritage. Volunteering is a great way to be active, meet new people and gain, or use, skills.

No matter what your interests are, your current skills or your time available, there's a volunteer role waiting for you. You could venture outdoors onto the water, towpath or nature reserves. If you prefer to be indoors, there are roles within museums, archives, visitor centres and second-hand bookshops. You could even volunteer from the comfort of your own home.

For more information about canal volunteering please email: [canalvolunteering@stroud.gov.uk](mailto:canalvolunteering@stroud.gov.uk) or visit [www.stroud.gov.uk/canalvolunteering](http://www.stroud.gov.uk/canalvolunteering)

# Park with something for everyone strikes gold

**G**reen-fingered professionals and volunteers who love Stratford Park have been awarded gold once again in the Heart of England in Bloom awards.

The judges said the accessible and inclusive space 'offered something for everyone', thanks to voluntary groups which have helped the park thrive alongside Ubico which maintains the grounds. The 56-acre park is owned and managed by Stroud District Council. Special areas of achievement were the arboriculture of the park, collaboration with local community groups, the wildflower underplanting in the woods, the walled garden and orangery.

The assessor for Heart of England in Bloom said: "Stratford Park in Stroud, Gloucestershire, is a wonderful community park offering something for everyone. The park features a large lake, a leisure centre complex, and even a museum, all set within beautifully maintained planted areas. The mix of formal planting, meadow areas, and mature plants makes this park an inviting space for people of all ages.

"Stratford Park is clearly a popular central spot for the local community and visitors alike, offering a variety of experiences that make it a perfect destination for a day out. Its well-deserved gold award is a testament to the hard work and dedication of those who maintain and contribute to this lovely space." Located just outside Stroud town centre, Stratford Park is home to Active Lifestyles Stroud leisure centre, the Museum in the Park, a recently renovated children's play area, sensory garden, skate park, bandstand, rich woodland and lake. The sensory garden, introduced by Stroud Valleys Project has been a fantastic addition, providing a multi-sensory experience with an array of sounds, sights and textures, including an arch, a labyrinth and a wheelchair-friendly garden zone. The park hosts a multitude of free and low-cost community activities, such as the weekly parkrun, operated by volunteers, as well as nature trails available through the Discover Stroud app and Music in the Park during warmer months.





## Eco warriors lead the charge in wildflower meadow project



**M**embers of Foxmoor Primary School Eco Warrior Group, along with parents and teaching staff have embarked on an exciting new project: transforming a grassy area on the school grounds into a vibrant wildflower meadow.

The group prepared the ground by raking the grass to expose the soil and scattered wildflower seeds which had been donated by the National Trust,

harvested from a species-rich meadow near Cranham.

The newly seeded area will be left to grow throughout the summer, allowing the plants to mature, flower, and eventually drop seeds back onto the ground. While the process may take time, with some seeds taking over a year to bloom, the group has taken the first important step towards creating a thriving wildflower meadow.

The initiative is part of the Stroud school's Nature Management Plan, which aims to enhance the school grounds by restoring grassland areas to wildflower meadows, planting spring bulbs at the base of hedgerows, creating a small orchard of fruit trees and developing a pond and wild area for aquatic wildlife.

**Find out how to create your own nature recovery area here:**

[www.stroud.gov.uk/naturerecovery](http://www.stroud.gov.uk/naturerecovery)

## Help with insulation – and cut your bills

**T**o help meet national climate targets and reduce energy bills, homes across the UK can be retrofitted with insulation and heated by renewable energy.

Studies estimate that up to 19 million homes need significant improvements to reduce the amount of energy needed to heat them. To tackle this challenge, we have teamed up with the other district councils in the county and have partnered with a company called Furbnow to create a one-stop-shop for advice and support for homeowners who can access trusted advice on how to make their home more energy efficient and make use of renewable energy.

For homeowners who may not qualify for government funding but want to improve their property's energy efficiency, the process of gaining advice, finding trusted contractors and managing multiple improvements can be daunting. The one-stop-shop makes this easier by managing the entire retrofit journey from start to finish. It starts with a home survey to assess your home and create a personalised home energy plan, followed by designing improvements, selecting and managing trusted contractors, and ensuring high-quality installation. Furbnow act as a single point of contact throughout the home energy improvement journey. This innovative partnership aims to accelerate the uptake of home energy improvements across Stroud district and Gloucestershire, helping residents

reduce their carbon footprint while creating warmer, more comfortable homes with lower energy bills. For more details, visit [www.Furbnow.com/Gloucestershire](http://www.Furbnow.com/Gloucestershire)

For residents that are not able or ready to invest in upgrades to their property, or for those who are renting from private landlords, Furbnow have partnered with Fairer Warmth, to provide access to free advice and grants that might be available to you. Fairer Warmth can help with:

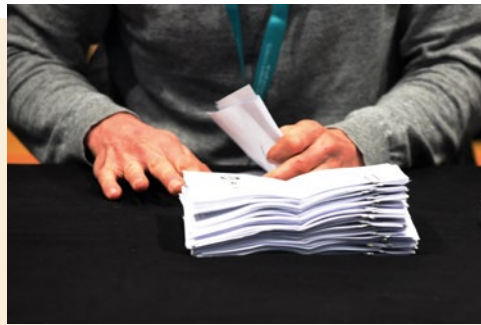
1. *Free, personalised energy saving advice and access to grants for your specific living situation and area.*
2. *Expert guidance on ways to save money on your home energy usage.*
3. *Planning, access and support for all things home energy related.*

You can sign up to the Fairer Warmth app through [www.Furbnow.com/Gloucestershire](http://www.Furbnow.com/Gloucestershire) and gain access to grants such as the Great British Insulation Scheme [www.gov.uk/apply-great-british-insulation-scheme](http://www.gov.uk/apply-great-british-insulation-scheme)

Additionally, if your household income is below £36,000, you may also be eligible for the Gloucestershire Warm and Well Scheme, which will provide fully funded insulation and renewable energy heating for your property:

<https://warmandwell.co.uk/>





# Ensure your electoral details are up to date

**B**etween July and December 2025, every household in the district will receive an annual canvass letter. Please ensure your electoral details are correct.

**No changes?** No further action is needed.

**Details changed?** Follow the instructions in the letter.

If you've recently moved or you're not yet registered to vote, you can either register online at [www.gov.uk/register-to-vote](http://www.gov.uk/register-to-vote) or update your details when you receive your canvass letter in the post.

To receive electoral communication from us by email, rather than post, please email us with your full name and address at [elections@stroud.gov.uk](mailto:elections@stroud.gov.uk).

## Voter ID and Voting Options

To vote in person at a polling station, you must present an accepted form of photographic ID. If you don't have one, you can apply for a free Voter Authority Certificate online at

[www.gov.uk/apply-for-photo-id-voter-authority-certificate](http://www.gov.uk/apply-for-photo-id-voter-authority-certificate)

You can also vote by post, with ballot papers sent to your chosen address two weeks before polling day, or set up a proxy vote, where someone votes on your behalf. Apply online at:

- [www.gov.uk/apply-postal-vote](http://www.gov.uk/apply-postal-vote)
- [www.gov.uk/apply-proxy-vote](http://www.gov.uk/apply-proxy-vote)

If you need help with any part of the electoral process please get in touch with us on **01453 766321** or email [elections@stroud.gov.uk](mailto:elections@stroud.gov.uk)

## Most residents say they are happy with SDC services

**O**ur annual independent survey of residents shows that 68% of people were either very satisfied or satisfied with how SDC runs things, 15% higher than the national average.

**90%** of residents are satisfied with their local area as a place to live (*national figure 75%*)

**68%** of residents are satisfied with the way Stroud District Council runs things (*national figure 55%*)

**58%** think that the council acts on the concerns of residents (*national figure 47%*)

**60%** of residents agree that services have been maintained to a good standard

**63%** agree that the council is working to improve the environment

**58%** agree that the council cares about the people and businesses that make up the community

*National figures from Local Government Association polling on resident satisfaction with councils round 38 (June 2024)*

## Local Government Reorganisation and Devolution

On 16 December 2024, the government published the English Devolution White Paper setting out a national programme of devolution and reform to local government. These plans include abolishing the existing structure of two-tier local councils across England and replacing them with Unitary Authorities, as already seen in places like Somerset and Cornwall.

Stroud District Council has been working with Gloucestershire County Council, Cheltenham Borough Council, Cotswold District Council, Forest of Dean District Council, Gloucester City Council and Tewkesbury Borough Council on a series of proposals for a unitary authority/authorities which must be submitted to the government by 28 November.

As part of this work, we will be asking our communities for their thoughts.

**For the latest information please visit:**

[www.stroud.gov.uk/lgr](http://www.stroud.gov.uk/lgr)



# NOTICEBOARD

## Come back again and again to the Museum in the Park

The Museum in the Park has a rich collection of 4,000 objects which tells the story of the Stroud district but it is much more than an impressive home to dinosaur bones, paintings, and the world's first lawnmower.

A modern extension houses a gift shop and refreshments area next to an art gallery, and a contemporary walled garden. Visitors are advised to allow one to two hours – and they can return as many times as they like because admission is free-of-charge.

More: [www.museuminthepark.org.uk](http://www.museuminthepark.org.uk)

## Investment approved

Stroud District Council has approved its budget which invests more than £1million in additional improvements to key areas which will make a difference to local people and communities.

On 13 February the Full Council meeting approved the budget, which will mean that council tax for SDC services is set to rise by an average of 13p per week, which is £243.08p per year for Band D properties.

Although Stroud District Council collects council tax, its services make up a small proportion of the total bill at approximately 11%.



**Lucky Severn Lottery** is a weekly online lottery, with a chance to win £25,000 as well as support good causes and local voluntary groups with fundraising.

Play the lottery, support the Stroud district area – it's that simple!

Tickets for the lottery cost just £1 per week. Each ticket has a 1 in 50 chance to win a prize each week, with a top prize of £25,000! Look out for additional prizes throughout the year. The lottery is drawn every Saturday night at 8pm.

Tickets are available at:

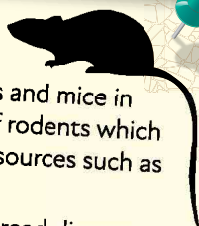
[www.luckysevernlottery.co.uk](http://www.luckysevernlottery.co.uk)

## How to spot signs of mice and rats

Spring is often the time when people find evidence of rats and mice in their homes and businesses. Cleaning can uncover signs of rodents which can be drawn to homes and gardens as their natural food sources such as seeds, nuts and berries are scarce.

Rodents can damage properties, contaminate food, and spread disease, so act quickly if you spot signs. Look for droppings, chewed items, greasy marks around skirting boards, musty odours, and holes. SDC's professional pest controllers offer quick, discreet and affordable pest control services.

Email: [environmental.health@stroud.gov.uk](mailto:environmental.health@stroud.gov.uk) or call 01453 766321.



## My SDC Account

A 'My SDC Account' is a quick and easy way to access council services at any time, including council tax.

By registering for an account you can view up-to-date information and check when payments are due.

There is no need for you to visit us, ring us or write to us. You will be able to log in at a time that suits you – 24 hours a day, 7 days a week.

To find out more visit [www.stroud.gov.uk](http://www.stroud.gov.uk) and click on My SDC Account.



STROUD  
DISTRICT  
COUNCIL

## Get SDC news delivered to your inbox

You can now get the latest news, events and services information from Stroud District Council sent straight to your inbox. You can also select your preferences for what kind of updates you want to receive.

Visit [www.stroud.gov.uk/email-alerts](http://www.stroud.gov.uk/email-alerts)



## Cashless parking

You can pay for your parking using your phone at any of Stroud District Council's Pay and Display car parks. With MiPermit, you can pay for your parking by phone, text, smart phone app or online, making paying a safer, more flexible and quicker experience. Instructions are available at parking machines on the MiPermit signs.

**MIPERMIT**

## Contacting the council

Find out the best way to contact the council or get information about services below:

➊ **Go online** – you can access most information you need on our website and you can pay online for things like council tax, planning applications, garden waste service, housing rent and much more.

✉ Visit [www.stroud.gov.uk](http://www.stroud.gov.uk)  
**Email us** with your question or issue and someone from the relevant team will get in contact with you as soon as possible. Email:

[customer.services@stroud.gov.uk](mailto:customer.services@stroud.gov.uk)  
or you can find a list of specific email contacts on our website.

➋ **Call us** on 01453 766 321 during our opening times, or you can visit the offices at Ebley Mill.  
Monday-Thursday from 8.45am-5pm,  
and Fridays 8.45am-4.30pm.



# RECYCLING AND WASTE

## What goes in your green bin or bag?

### ✓ YES PLEASE

✓ clean it   ✓ empty it   ✗ don't bag it



Cans and tins



Foil (e.g. pie cases)



Aerosol cans



Glass bottles and jars



Plastic pots, tubs, trays



Plastic bottles

### ✗ NO THANKS

- ✗ Black bin bags or rubbish
- ✗ Carrier bags/cling film
- ✗ Film lids from microwave meals or containers
- ✗ Plastic wrapping (e.g. bread wrapping)
- ✗ Plastic toys
- ✗ Large plastic items (e.g. buckets)
- ✗ Light bulbs
- ✗ Nappies
- ✗ Drinking glasses, flat glass or glass dishes
- ✗ Polystyrene
- ✗ Mirrors, Pyrex, plates/crockery
- ✗ Pet food pouches
- ✗ Batteries\*
- ✗ Car parts or batteries
- ✗ Crisp packets
- ✗ Cutlery (e.g. knives)
- ✗ Scrap metal
- ✗ Spectacles
- ✗ Clothing or textiles
- ✗ Garden waste

## What goes in your green recycling box?

### ✓ YES PLEASE



Newspaper and magazines



Phone directories, catalogues, paperback books



Junk mail, egg boxes



Cereal boxes, corrugated cardboard birthday/Christmas cards, wrapping paper (without glitter/foil)



Clean pizza boxes (make sure all food is removed)

**All cardboard:**  
Large pieces of cardboard should be folded/cut to the approximate size of your recycling box, and placed underneath

### ✗ NO THANKS

- ✗ Photographs
- ✗ Polystyrene
- ✗ Bubble wrap
- ✗ Wallpaper
- ✗ Shiny foil or glitter wrapping paper, cards or gift tags
- ✗ Hardback books
- ✗ Corrugated cardboard boxes that have not been flattened or broken up
- ✗ Wet or greasy cardboard/paper

\*We will be collecting vapes and batteries at the kerbside soon! Visit [www.stroud.gov.uk/vapes](http://www.stroud.gov.uk/vapes) and [www.stroud.gov.uk/batteries](http://www.stroud.gov.uk/batteries) for more details.

To find other recycling options for items that can't be recycled in your kerbside bin/bag/box visit the **Waste Wizard** tool at:  
[www.stroud.gov.uk/wastewizard](http://www.stroud.gov.uk/wastewizard)

