

Council Tax

2025/26



Also includes the spending plans for:



OPCC

Office of the Police &
Crime Commissioner
for Gloucestershire

www.gloucestershire.gov.uk



Gloucestershire
COUNTY COUNCIL

Our spending plans 2025/26

This council will continue to deliver for you next year with an ambitious budget that will see us invest over £665 million in services and projects across Gloucestershire.

Unlike many of our neighbours who are making cuts, Gloucestershire County Council's budget sees us able to invest in critical areas. Due to some strong financial management over recent years, I am pleased to say that we remain financially stable and that our spending plans for next year include a net increase of £48.2 million compared to last year.

This means that we can continue to be ambitious in our plans for the years ahead, which include significant investment in our priority areas of Highways, SEND, Adult Services, Infrastructure, the environment and supporting our rural areas.

This is all on top of what we will have delivered by the end of the current financial year, which include:

- Being on track to resurface or surface dress over 100 roads and filling tens of thousands of potholes as part of our £100 million investment in Gloucestershire roads
- £11.8 million worth of improvements to school buildings, including a new Alternative Provision School in Gloucester
- An additional £23.3 million of investment into protecting our most vulnerable children
- Additional routes for The Robin, our bookable bus service
- A new transport hub at Arle Court and a 1,000-space park and ride
- Linking Gloucester and Cheltenham with our high-quality cycle spine.

Our budget proposes raising £20.3 million to help fund services through a council tax increase of 2.99 per cent. We would raise £7.9 million specifically to support work with the most vulnerable adults in the county through a further 2 per cent increase in the adult social care precept.

Despite this increase the council still expects to have one of the lowest council tax levels of any county council. Based on a band D property, residents would pay an additional £6.65 each month.

We are continuing to challenge ourselves on how we can work more effectively and as a result have identified £24.5 million in savings, additional income and efficiencies for next year.

Our 2025/26 budget will see us invest further into our county to deliver for our residents and businesses, both for now and for the future of Gloucestershire.



A handwritten signature in black ink that reads "Stephen Davies".

Councillor Stephen Davies
Leader of Gloucestershire County Council

Some of the essential services and schemes your money helps to deliver



£7.5m

in 2025/26 towards the construction of three new adult care homes, with further investment over the coming years



An ongoing £10m fund towards our

£100m

4-year commitment to go on improving Gloucestershire's roads, with a greater focus on tackling rural roads



Continuing a four-year programme to increase the number of on-street Electric Vehicle charging points to around

1,000

and working with bus operators to get electric buses operating across the network



Planting our **500,000th** tree and continuing to find locations across the county for more



£2.1m

extra towards supporting young people with SEND and their families



£48.9m

to continue delivery of the major infrastructure around M5 J10, helping to bring jobs and housing to the area



£1.3m

to make improvements to our Household Waste Recycling Centres



£22.2m

towards increasing capacity and improving school buildings and facilities of schools across the county, including

£12.8m

towards a new 200 place special school



Ever thought about becoming a firefighter?

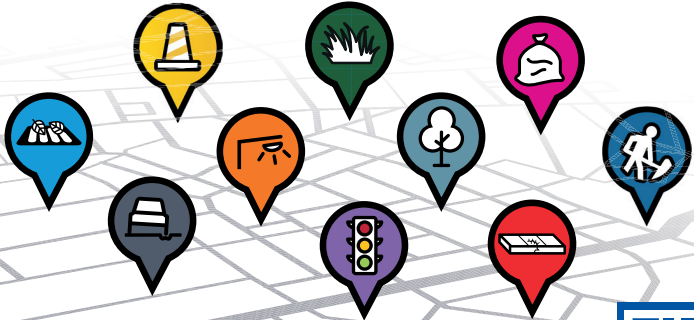
We need on-call firefighters across the county

- ▶ Do you live near a station or work from home?
- ▶ Do you care about your community and want to make a difference?
- ▶ Would you be willing to be 'on-call' should we need you to attend an emergency?

If you're looking for a new challenge and want to make a difference, visit www.glosfire.gov.uk or scan the QR code.



Report it *with* **Fix My Street**



From blocked drains and overgrown hedges, to potholes, pavements and streetlights, all kinds of issues can be reported online.



Download the app **FixMyStreet** or visit www.gloucestershire.gov.uk/FixMyStreet

The cost of fighting crime

The Government is contributing just over half of the £168m it will cost to police Gloucestershire over the next 12 months. While it is true that £88m is £4.5m more than last year, the remaining £80m the Chief Constable needs, will come through your council tax.



That 53% of police funding comes from the Home Office, and 47% from local taxation, is because Governments have not changed the outdated formula used to allocate grant funding. I have campaigned to stop smaller forces like Gloucestershire losing out, and stop 'rewarding' high crime urban areas at the expense of rural forces like ours. But this has again fallen on deaf ears.

That is why I have been left with no alternative than to take the decision to increase council tax by 4.5%, the equivalent of adding £14, or 27p per week, to the annual bill for a band D property, taking it to £322.

Many other forces around the country are in a similar situation and, like them, we've been working hard for some time to find ways in which the Constabulary can make savings. While they, and my office, have made many, we're now running out of options. But rest assured that you can still expect to see officers out on patrol and should you be a victim of crime, the police will still be there for you.

A handwritten signature in black ink that reads "Chris Nelson". The signature is written in a cursive style.

Chris Nelson
Gloucestershire Police and Crime Commissioner



OPCC
Office of the Police &
Crime Commissioner
for Gloucestershire
Chris Nelson

A typical day's incoming demand



Where does the money go?

Expenditure	£000
Police officers	94,407
PCSOs	5,855
Police Staff	39,535
Other running costs	41,392
Capital Financing	3,472
Office of the PCC	2,052
Supporting victims and communities	1,369
Total Expenditure	188,082
Interest and other income	(10,021)
Specific grants	(7,427)
Contribution from reserves	(2,247)
Net Expenditure	168,387

Funded by

Net Budget Requirement Funded by:	£000
Government Grant	88,169
Collection fund surplus	640
Council Tax Precept	79,578
Total Funding	168,387

Precept increases

Band	A	B	C	D	E	F	G	H
2024/25 charge	£205.39	£239.62	£273.85	£308.08	£376.54	£445.00	£513.47	£616.16
Increase	£9.33	£10.89	£12.44	£14.00	£17.11	£20.23	£23.33	£28.00
2025/26 charge	£214.72	£250.51	£286.29	£322.08	£393.65	£465.23	£536.80	£644.16



The Police and Crime Commissioner

Phone: 01452 754348 • Email: PCC@gloucestershire-pcc.gov.uk

Website: www.gloucestershire-pcc.gov.uk

Gloucestershire Constabulary

Phone: 101 for non-emergency calls • 999 for emergencies

Website: www.gloucestershire.police.uk (you can now report some crimes online –www.gloucestershire.police.uk/ro/report/ocr/af/how-to-report-a-crime/)

Forest of Dean & Gloucester Local Policing Area

T/Superintendent Rob Lawton

Location: Waterwells, Quedgeley
Email: Robert.Lawton@gloucestershire.police.uk

Cheltenham & Tewkesbury Local Policing Area

Superintendent Emma Macdonald

Location: Cheltenham Police Station
Email: Emma.Macdonald2@gloucestershire.police.uk

Cotswolds & Stroud Local Policing Area Superintendent Matthew Tite

Location: Stroud Police Station
Email: Matthew.Tite@gloucestershire.police.uk

Your Community Alerts

Receive community updates from your local policing team so you know exactly what's going on in your area.
Sign up for free at www.yourcommunityalerts.co.uk

Phone **101** for non-emergencies and **999** for emergencies.
Report non-emergency crime or to find advice and information visit www.gloucestershire.police.uk

All details are correct and up to date at time of publication.



Gloucestershire Constabulary



OPCC
Office of the Police & Crime Commissioner
for Gloucestershire