

CCC Engineering Works Delivery Programme

Section 1

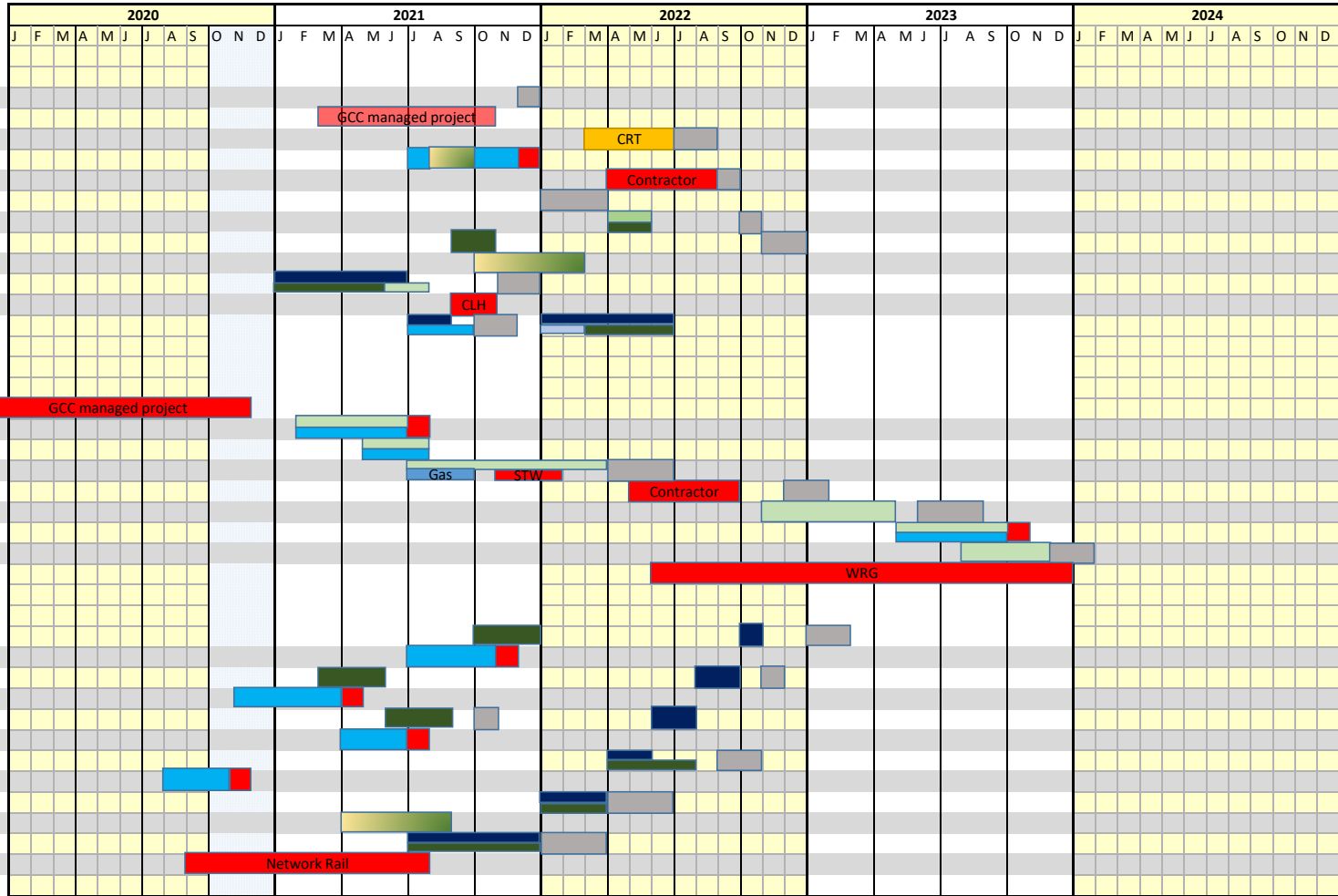
- 1.1 Saul Junction to Walk Bridge
- 1.2 Walk Bridge
- 1.3 Walk Bridge to Whitminster Bridge
- 1.4 Whitminster Bridge & Lock
- 1.5 Whitminster Lock to River Connection
- 1.6 River Frome Canalisation
- 1.7 Lockham River Connection
- 1.8 Lockham to Stonepitts Bridge
- 1.9 Stonepitts Bridge
- 1.10 Stonepitts Bridge to Oil Pipeline
- 1.11 Oil Pipeline
- 1.12 Oil Pipeline to A38

Section 2 - Missing Mile

- 2.1 A38 Roundabout Crossing
- 2.2 A38 New Lock
- 2.3 Mooring Basin
- 2.4 Canal Channel Mooring Basin to M5
- 2.5 M5 Crossing
- 2.6 Canal Channel M5 to New Lock
- 2.7 New Lock East of M5
- 2.8 Canal Channel New Lock to Westfield Lock
- 2.9 Westfield Lock and Oldbury Aqueduct

Section 3

- 3.1 Oldbury Aqueduct to Dock Lock
- 3.2 Dock Lock
- 3.3 Dock Lock to Pike Lock
- 3.4 Pike Lock
- 3.5 Pike Lock to Blunder Lock
- 3.6 Blunder Lock
- 3.7 Blunder Lock to Newtown Lock
- 3.8 Newtown Lock
- 3.9 Newtown Lock to Bonds Mill Bridge
- 3.10 Bonds Mill Bridge
- 3.11 Bonds Mill Embankment
- 3.12 Ocean Railway Bridge



- Heritage works
- Contractor/Third Party/Utility
- GCC managed project
- Canal & River Trust
- Piling
- Vegetation Clearance
- Towpath
- Dredging
- Excavation/Earthworks
- Lift Bridge Contractor

Appendix 2