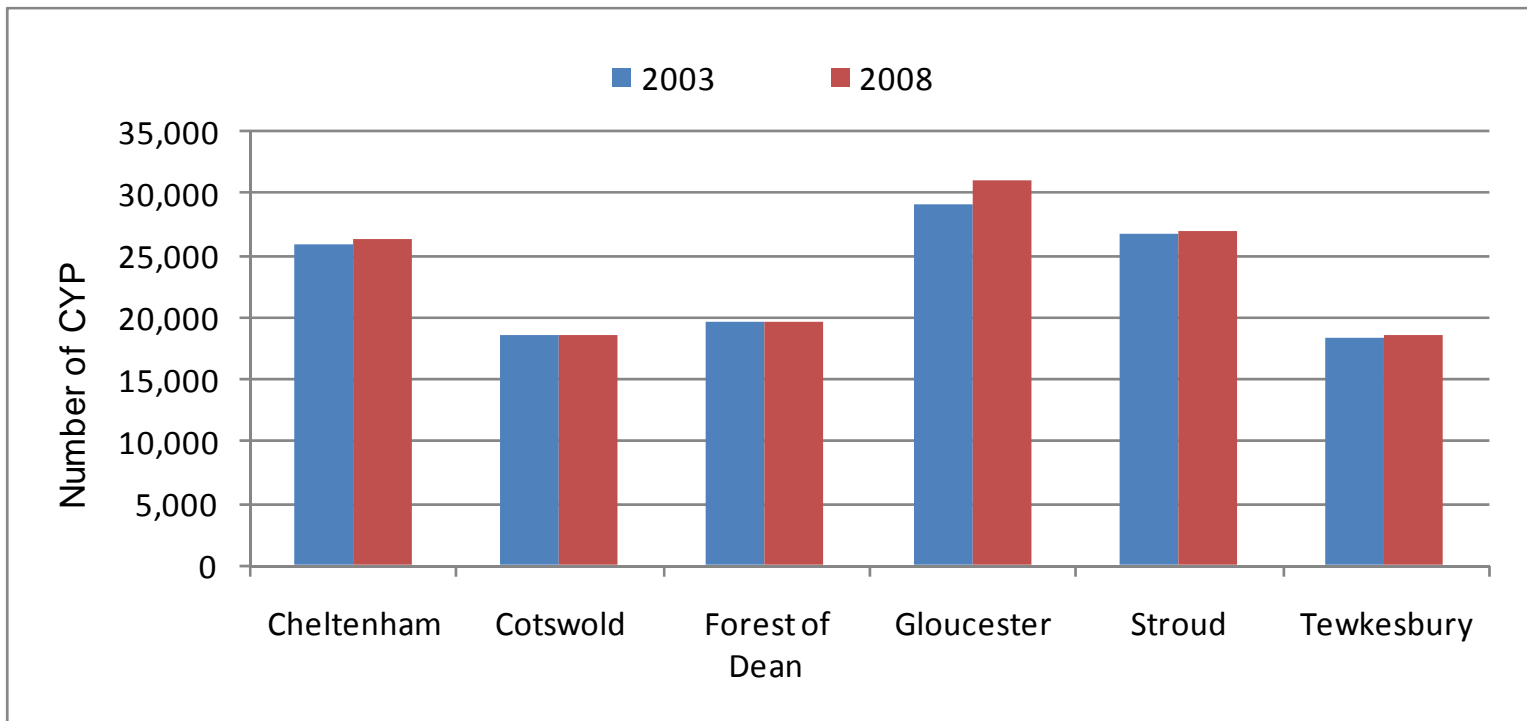




Children and Young People Stakeholder Partnership STROUD

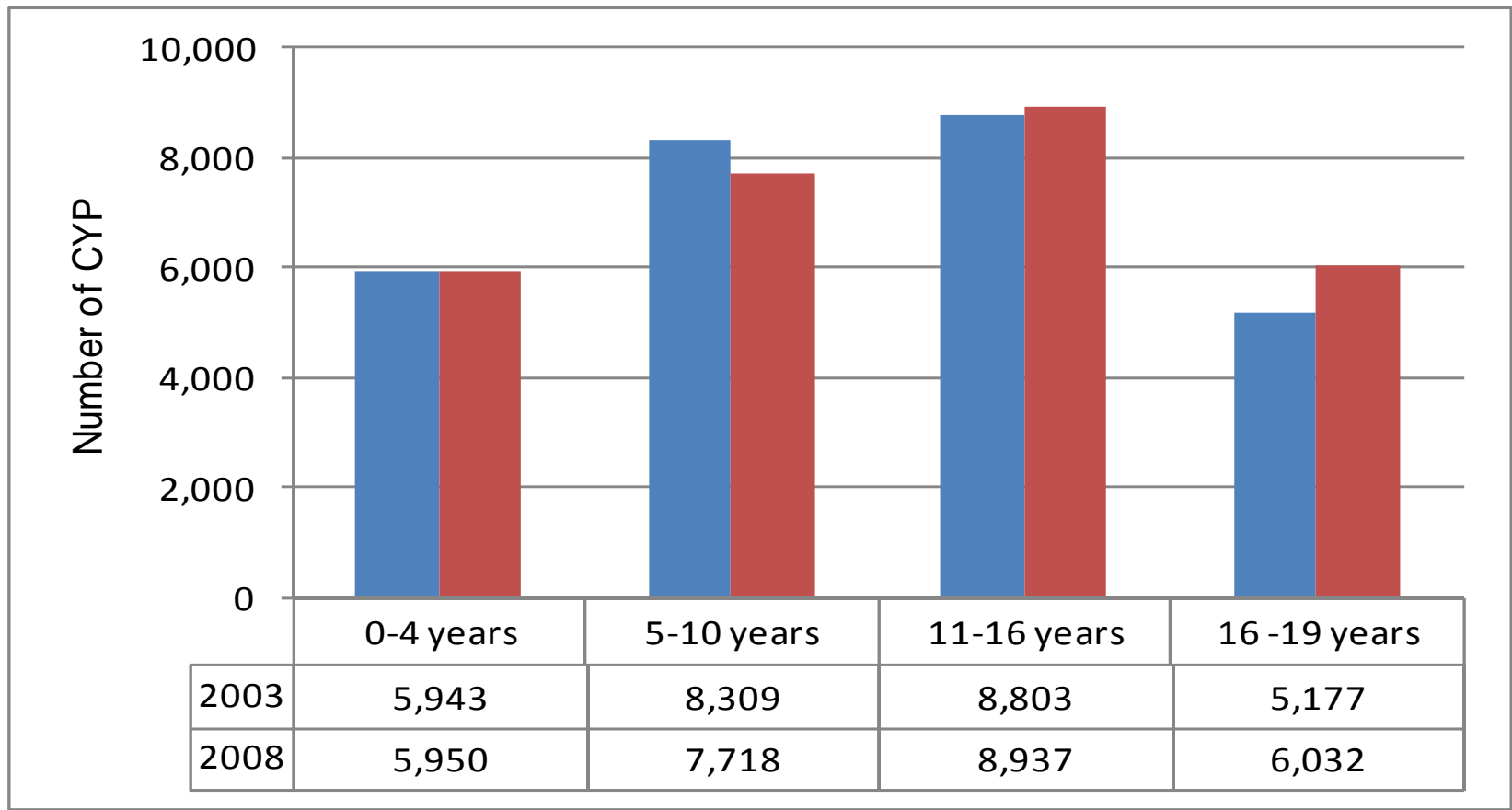
**Children & Young People's Needs
Analysis 2009 – focus Child Poverty**

In 2008 there are estimated to have been 27,079 children and young people aged between 0-19 living in Stroud. This represents an increase of 0.90% between 2003 and 2008. Numbers have increased in four districts, with only Cotswold and Forest of Dean seeing a slight decline in numbers.





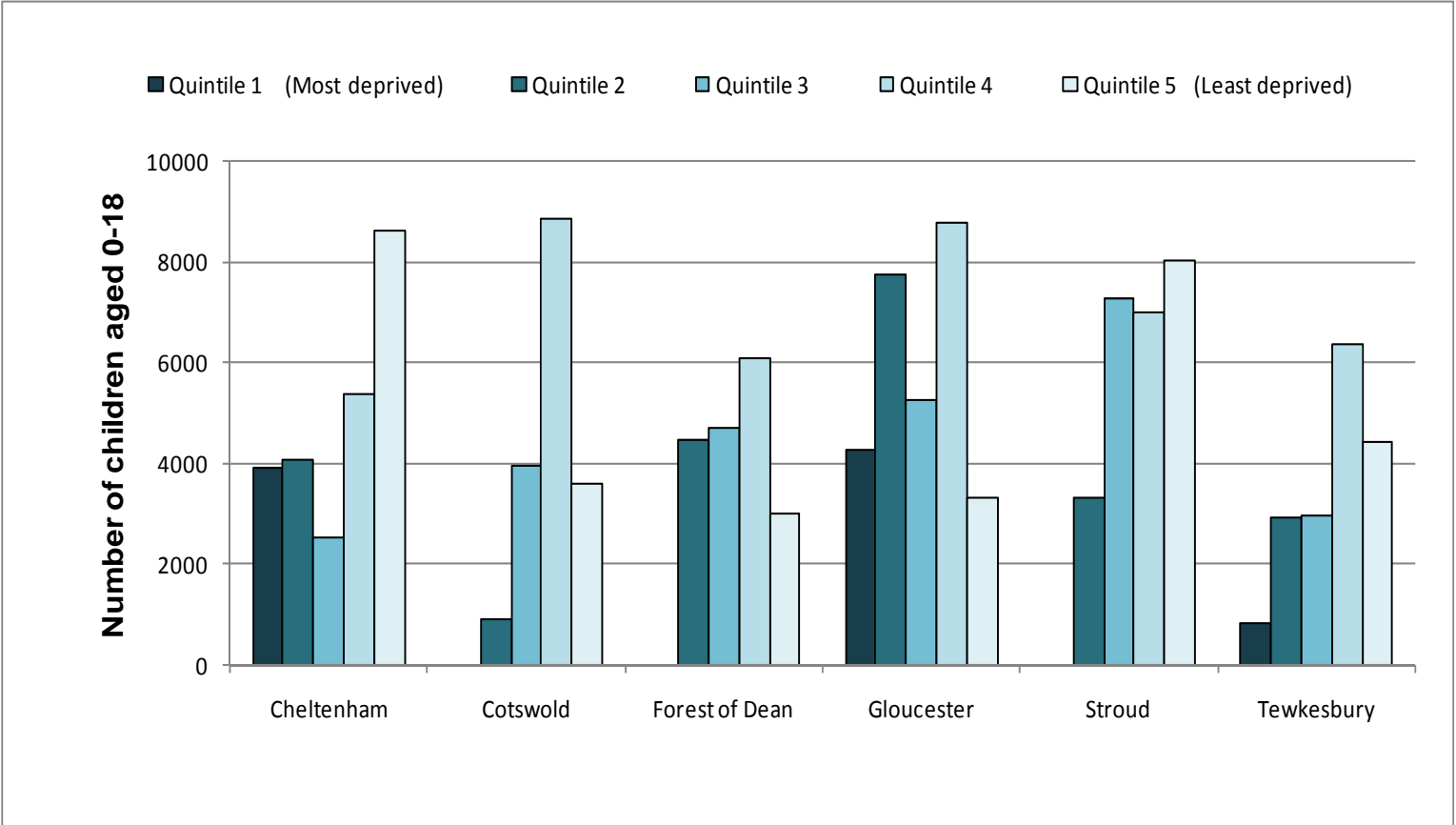
Changes over last five years



	National deprivation quintiles					
	Quintile 1 (Most deprived)	Quintile 2	Quintile 3	Quintile 4	Quintile 5 (Least deprived)	Total
Districts:						
Cheltenham	3930	4075	2532	5364	8614	24515
Cotswold	0	917	3960	8871	3606	17354
Forest of Dean	0	4466	4698	6081	2993	18238
Gloucester	4270	7752	5269	8759	3325	29375
Stroud	0	3324	7282	6982	8013	25601
Tewkesbury	843	2937	2946	6378	4420	17524
Locality hubs:						
Cheltenham North	3018	3094	1641	783	1143	9679
Cheltenham South and East	912	981	1069	4581	7477	15020
Cotswold	0	917	3960	8780	3473	17130
Forest	0	4466	5061	6382	2993	18902
Gloucester Central	1771	3904	0	0	0	5675
Gloucester North and East	1138	2459	2233	5352	3169	14351
Gloucester South West	1361	1568	3496	3932	883	11240
Stroud	0	3324	6921	6672	7419	24336
Tewkesbury	843	2758	2306	5953	4414	16274
County	9043	23471	26687	42435	30971	132607

Gloucestershire population of children and young people aged 0-18 by deprivation quintiles, 2008 (IDACI 2007)

The same information is given below in chart form.



District	June 2008		June 2009		Highest claiming ward (June 2009)
	Claim count	Claimant rate	Claim count	Claimant rate	
Cheltenham	1,381	2.0%	2889	4.10%	Hesters Way (8.7%)
Cotswold	359	0.7%	1046	2.10%	Cirencester Watermoor (4.7%)
Forest of Dean	777	1.6%	1779	3.60%	Clnderford West (6.2%)
Gloucester	1,625	2.3%	3352	4.70%	Westgate (9.2%)
Stroud	685	1.0%	2062	3.10%	Central (7.5%)
Tewkesbury	597	1.3%	1494	3.20%	Tewkesbury Priors Park (6.7%)

Claimant Count - Jobseekers Allowance & National Insurance credits
at Job Centre Plus local offices in Gloucestershire



LA Name	Children dependent on workless benefits - Aged 0-15							
	2004		2005		2006		2007	
	Caseload	%	Caseload	%	Caseload	%	Caseload	%
Cheltenham	3,160	17.1	3,015	16.4	2,980	16.2	2,930	16.0
Cotswold	1,325	9.2	1,245	8.8	1,115	8.0	1,195	8.6
Forest of Dean	2,035	13.5	2,010	13.3	1,955	13.1	1,960	13.4
Gloucester	4,305	18.2	4,330	18.3	4,220	18.0	4,350	18.5
Stroud	2,045	9.7	2,130	10.2	2,100	10.1	2,110	10.3
Tewkesbury	1,820	12.5	1,745	12.1	1,705	11.9	1,770	12.5

Children dependent on workless benefits, by district, 2004 – 2007