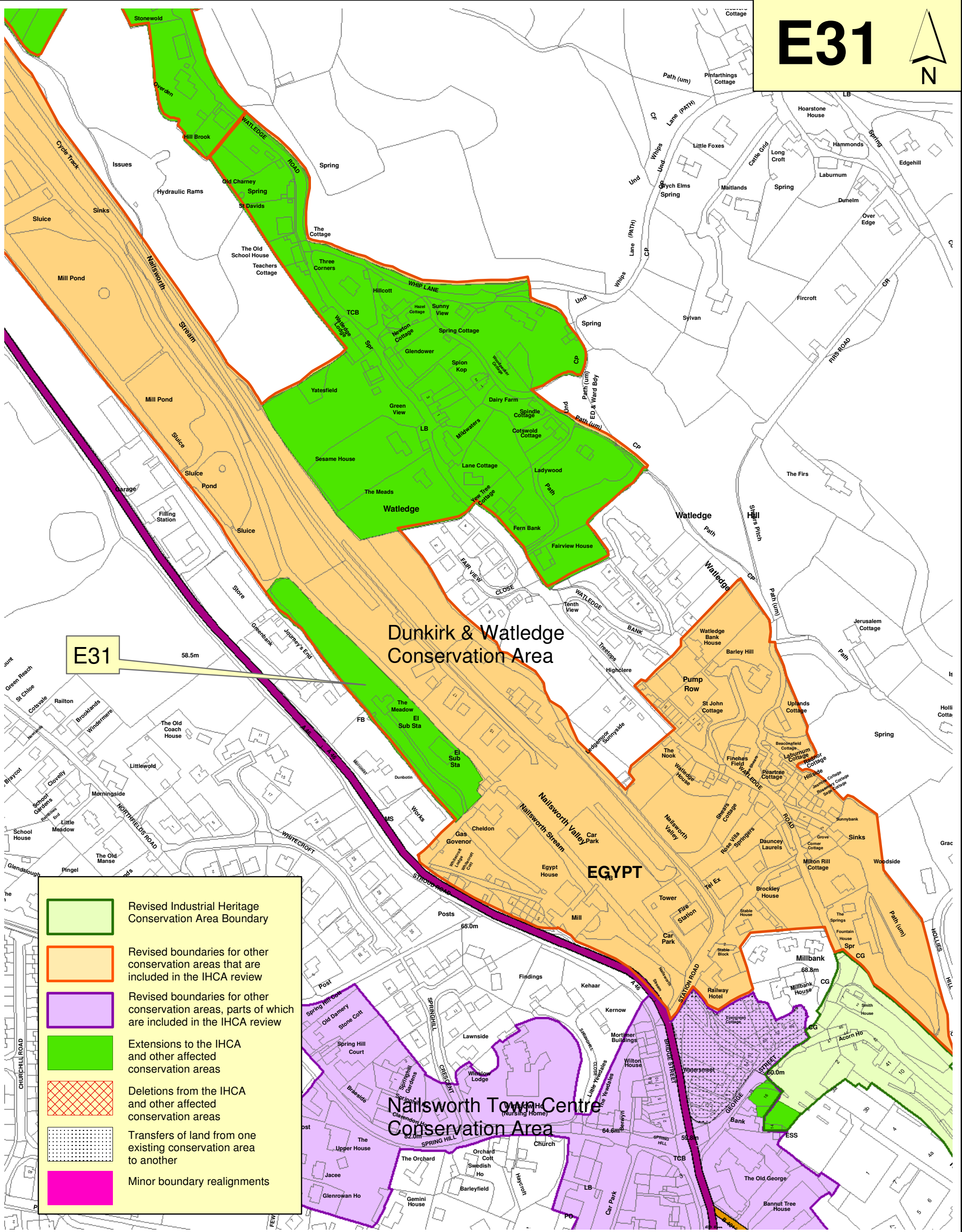


E31



	Revised Industrial Heritage Conservation Area Boundary
	Revised boundaries for other conservation areas that are included in the IHCA review
	Revised boundaries for other conservation areas, parts of which are included in the IHCA review
	Extensions to the IHCA and other affected conservation areas
	Deletions from the IHCA and other affected conservation areas
	Transfers of land from one existing conservation area to another
	Minor boundary realignments

Conservation Area boundary changes (adopted November 2008)



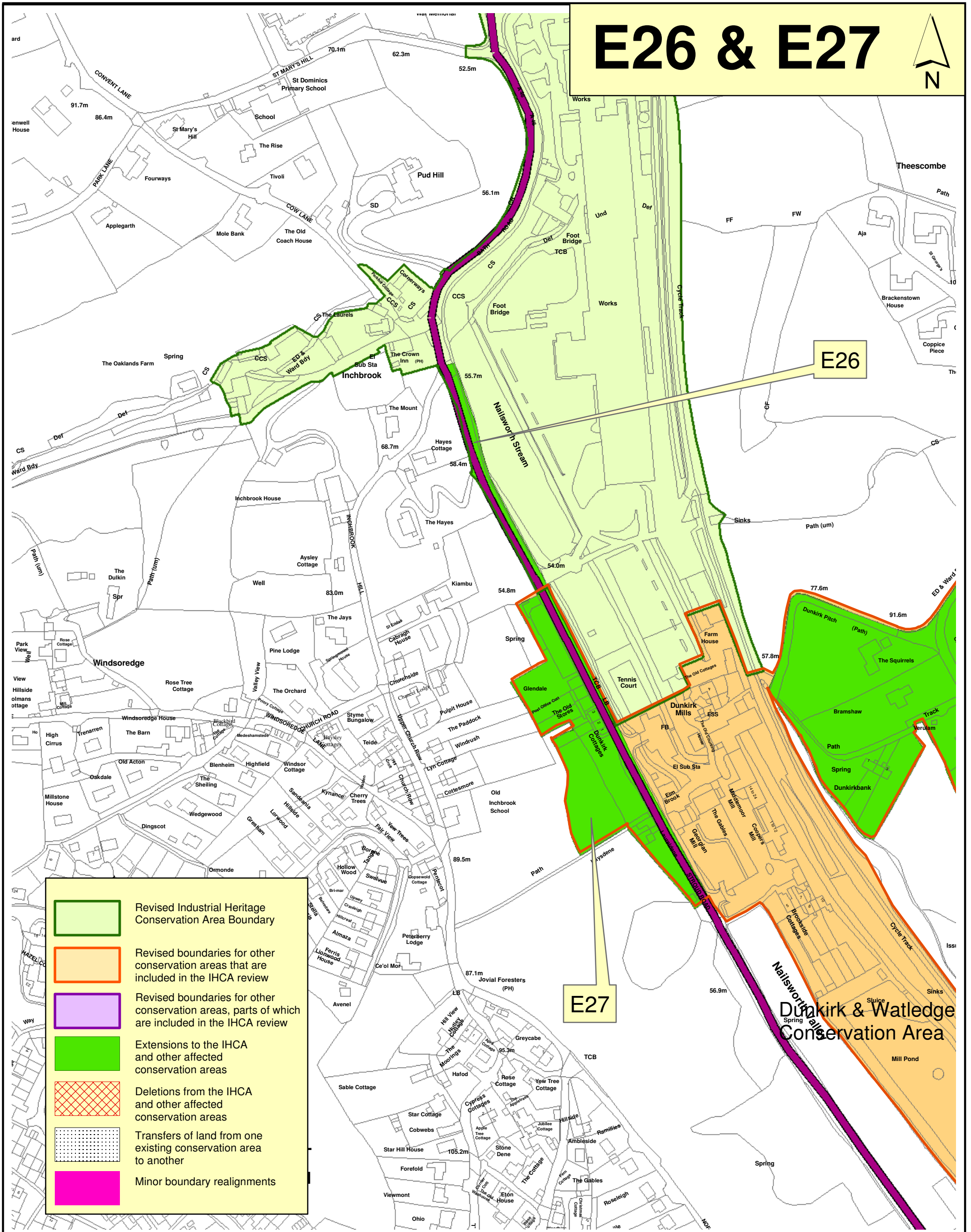
Reproduced from the Ordnance Survey mapping with the permission of the Controller of Her Majesty's Stationary Office (c) Crown Copyright. Unauthorized reproduction infringes Crown Copyright and may lead to prosecution or civil proceedings.

This Map has been produced for Council purposes only. No further copies may be made. Stroud District Council, Ebley Mill, Westward Road, Stroud, GL5 4UB. www.Stroud.gov.uk 100019682

Scale: 1:2,500

**IHCA
CONSERVATION AREA
STATEMENT
Nov 2008**

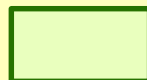



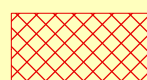
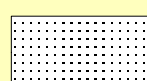

E26 & E27



E26

E27

Dunkirk & Watledge Conservation Area

-  Revised Industrial Heritage Conservation Area Boundary
-  Revised boundaries for other conservation areas that are included in the IHCA review
-  Revised boundaries for other conservation areas, parts of which are included in the IHCA review
-  Extensions to the IHCA and other affected conservation areas
-  Deletions from the IHCA and other affected conservation areas
-  Transfers of land from one existing conservation area to another
-  Minor boundary realignments

Conservation Area boundary changes (adopted November 2008)

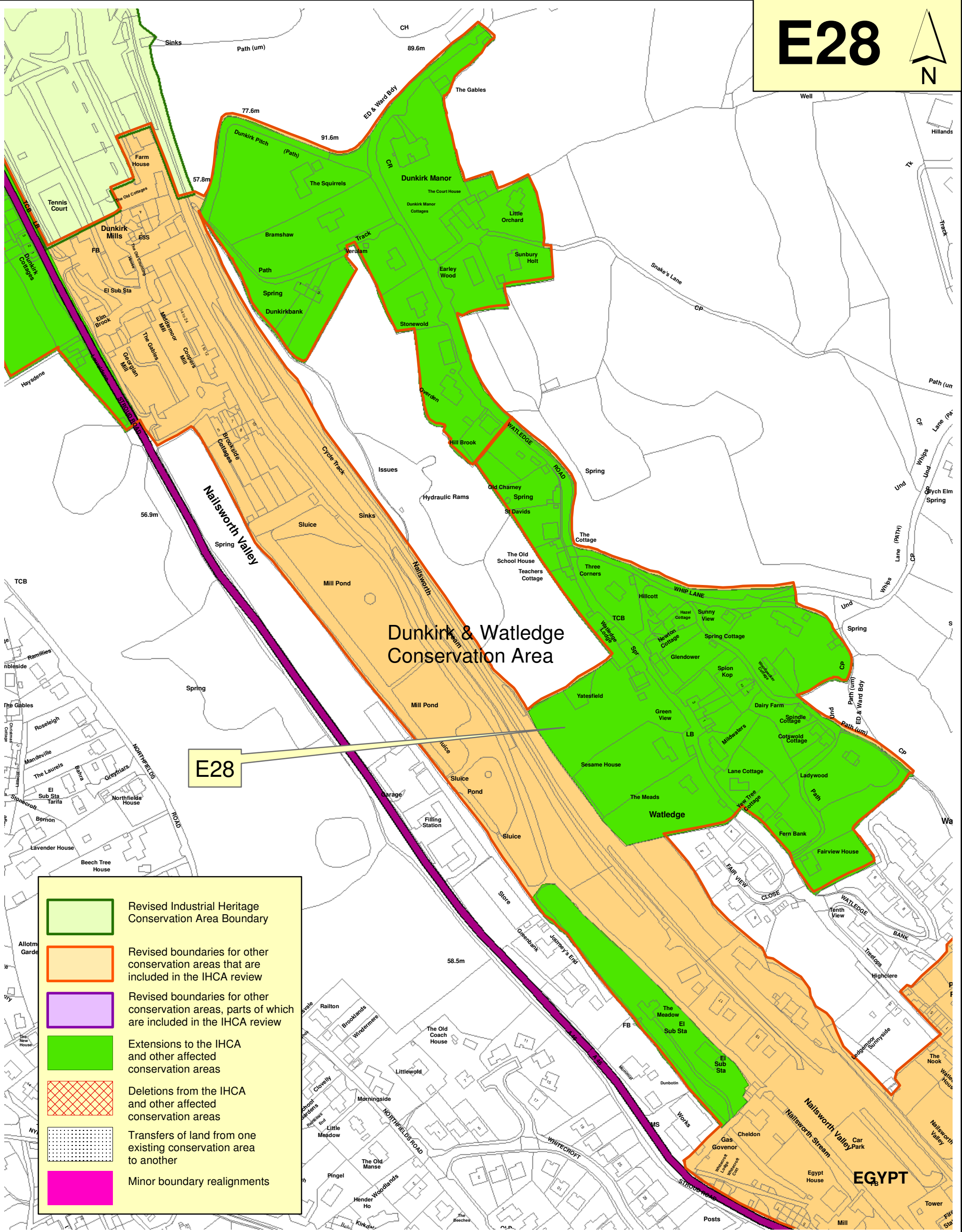


Reproduced from the Ordnance Survey mapping with the permission of the Controller of Her Majesty's Stationary Office (c) Crown Copyright. Unauthorized reproduction infringes Crown Copyright and may lead to prosecution or civil proceedings.

This Map has been produced for Council purposes only. No further copies may be made. Stroud District Council, Ebley Mill, Westward Road, Stroud, GL5 4UB. www.Stroud.gov.uk 100019682

Scale: 1:2,500

IHCA
CONSERVATION AREA
STATEMENT
Nov 2008



	Revised Industrial Heritage Conservation Area Boundary
	Revised boundaries for other conservation areas that are included in the IHCA review
	Revised boundaries for other conservation areas, parts of which are included in the IHCA review
	Extensions to the IHCA and other affected conservation areas
	Deletions from the IHCA and other affected conservation areas
	Transfers of land from one existing conservation area to another
	Minor boundary realignments

Conservation Area boundary changes (adopted November 2008)



Reproduced from the Ordnance Survey mapping with the permission of the Controller of Her Majesty's Stationary Office (c) Crown Copyright. Unauthorized reproduction infringes Crown Copyright and may lead to prosecution or civil proceedings.

This Map has been produced for Council purposes only. No further copies may be made. Stroud District Council, Ebley Mill, Westward Road, Stroud, GL5 4UB. www.Stroud.gov.uk 100019682

Scale: 1:2,500

**IHCA
CONSERVATION AREA
STATEMENT
Nov 2008**