

ENVIRONMENTAL STATEMENT



2009-2010



'Leading a community that is making Stroud District a better place to live work and visit for everyone.'

Contents

	Page
■ Foreword	3
■ Introduction	4
■ Profile of Stroud District	7
■ Priority 1: Sustainable Consumption and Production - 'More for Less'	8
■ Priority 2: Climate Change and Energy - 'Confronting our greatest threat'	10
■ Priority 3: Protecting our Natural Resources and Enhancing the Environment - 'Clean, Green and Safe'	14
■ Priority 4: Creating Sustainable Communities - 'From local to global'	17
■ Priority 5: Keeping the Council and the Local Community Focused on Environmental Limits - Let's not forget how important the issue is'	19
■ Glossary	21
■ Appendix 1 - Environmental Policy and Environmental Management System	22
■ Appendix 2 - Environment Programme Update	25



This Statement has a number of references to other reports and information that can be obtained through websites. If you are unable to access any of the additional information please get in touch with the Policy Team on 01453 754289.

Foreword

Stroud District Council is committed to improving the environment and has demonstrated this by being accredited with both EMAS and ISO 14001 since 1999. This is key to us achieving our vision - '*Leading a community that is making Stroud District a better place to live work and visit for everyone*'.

In 2007 we adopted a twenty year Environmental Strategy and this statement reflects both our strategy progress and also our **EMAS** Statement.

It is important to understand the challenges facing us and our communities Every year we seek out the opinions of our residents and businesses to ascertain their satisfaction with Council services, what is important to them, and areas for improvement. In 2009, 74% of residents believed that SDC was working to improve the environment.

With increasing fuel costs and a slow economy Stroud District Council has been looking at ways to help both residents and businesses through this difficult time. We have been actively undertaking initiatives that will help us both save money and energy. A good example of helping the community was being one of only five organisations to be selected to run the Government PAYS pilot - the forerunner to the Green Deal. Fifty homes in the Stroud District got the opportunity to access finance to invest in energy efficiency and microgeneration technologies makeovers. We also undertook an innovative project - Solid to Sustainable (S2S)- installing ground source heat pumps and other renewable heating technologies into 43 cross tenure homes in an area that does not have mains gas. For businesses we extended the Target 2050 project business strand which has helped small and medium sized companies' access independent energy efficiency advice.

As an organisation we have continued reducing our own carbon footprint by installing a number of energy efficient measures in our buildings and doing less business miles, but still providing good quality services.

Over the past year our hard work to improve the environment as has been recognised with two awards. A 'Green Apple' award for the S2S project for Sustainable Development and by Regen South West for 'The Most Proactive Local Authority award. These awards acknowledge the Council's overall commitment and drive to improve both the environment and quality of life for the communities of Stroud District.

We hope you enjoy reading this report and share our pride in our achievements.



Councillor John Stanton

Climate Change



Councillor Barbara Tait

Planning and Environment

Introduction: Stroud District Council and EMAS

The Eco-Management and Audit Scheme (**EMAS**), a voluntary European initiative designed to recognise and reward organisations that go beyond minimum legal compliance and continually improve their environmental performance. Stroud District Council (SDC) has chosen **EMAS** as the best management tool to allow us to limit our environmental impact and improve upon our environmental performance. **EMAS** uses ISO 14001 (International Standards Organisation) as its management system but goes beyond this by requiring organisations to involve employees at all levels, demonstrate continued compliance to environmental legislation and provide regular information about their environmental performance to the public in the form of this annual **EMAS** Statement.

The Council has been registered under the Scheme (**EMAS**) since 1999; it was one of the first councils to achieve this European standard. **EMAS**, which is only awarded after an external and independent assessment, has allowed us to demonstrate our continuing commitment to improving our environmental performance. Stroud District Council is classified under the ISIC (NACE) code 75.1 - the Administration of the State and the economic and social policy of the community.

In 2007 we adopted a 20 year Environment Strategy. We have focused on those things that will help us 'live within environmental limits'. At the heart of the strategy are five priorities for action

- **Sustainable consumption and production**
- 'More for Less'
- **Climate Change and Energy**
- 'Confronting our greatest threat'
- **Protecting our Natural Resources and enhancing the Environment**
- 'Clean, Green and Safe'
- **Creating Sustainable Communities**
- 'From local to global'
- **Keeping the Council and the Local Community Focused on Environmental Limits**
- 'Let's not forget how important the issue is'

The Council recognises that it has an impact the environment through the services it provides and that it has direct powers and responsibilities to encourage and where necessary enforce. The diagram in figure 1 shows the linkage between the EMS objectives and Environment Strategy priorities. The EMS is a key delivery and reporting mechanism for the Environment Strategy and this Statement provides the basis of our annual progress against our strategy.

The Council has legal responsibilities to both comply with and enforce different areas of environmental legislation. This includes the control of air, water and land pollution, assessing and enforcing planning applications, undertaking collection of residential waste and disposing of the Council's own waste in accordance with legislation.

To help ensure that SDC carries out and keeps up to date with environmental legislation, the Council subscribes to a web based legal register applicable to local authorities. The register is updated on a biannual basis and is accessible to all Council staff. The Council also has an annual environmental legal compliance audit which is carried out by an external auditor to ensure that the Council's own activities comply with legislation.

Figure 1 – EMAS Golden Thread

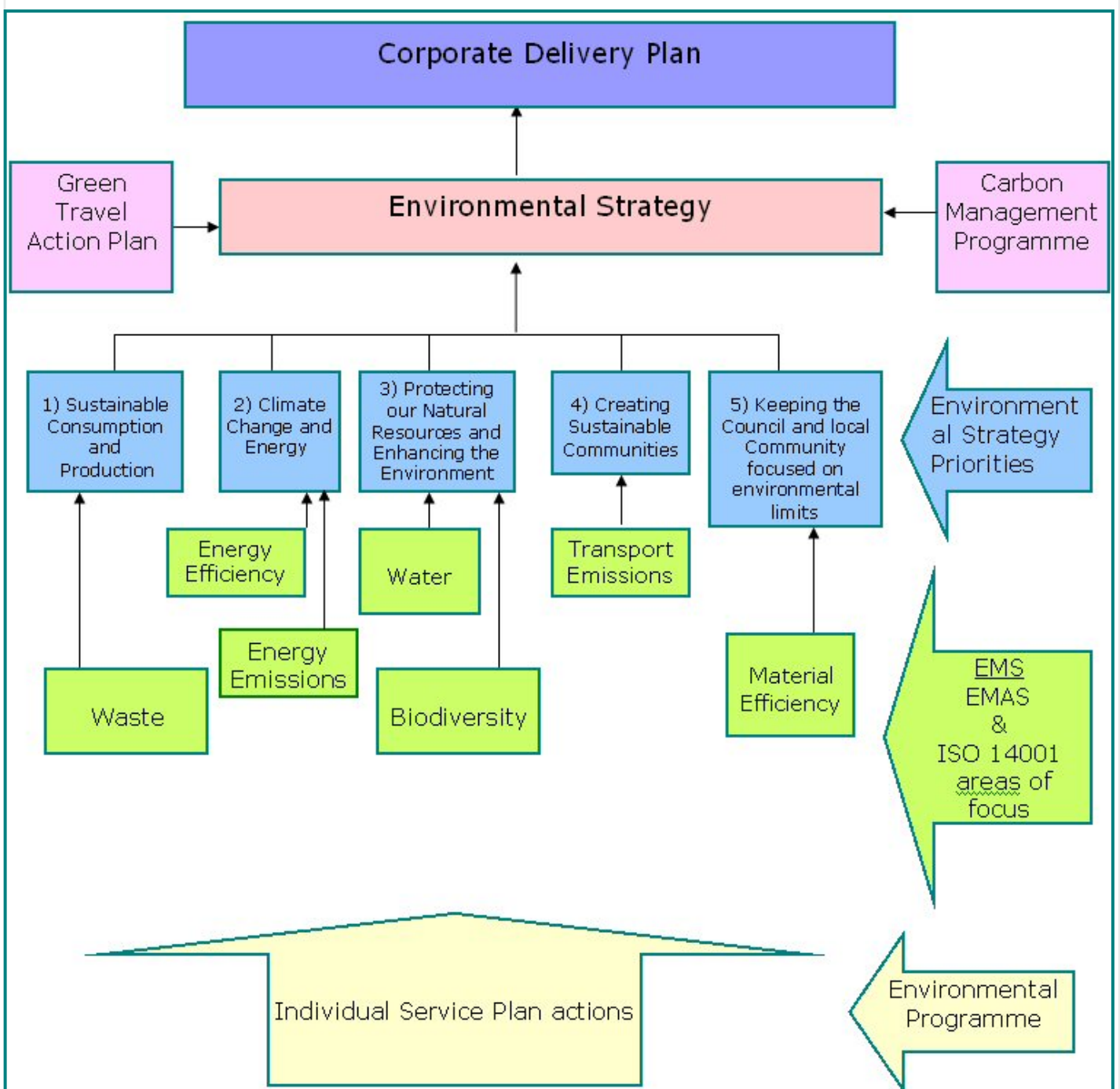


Figure 2—A brief summary of the Council’s different significant environmental aspects and impacts.

Environmental Aspects	Council Activity	Environmental Impacts
Use of Natural Resources - energy	Use of energy, leading to emissions of green house gases	Climate change, depletion of natural resources and air pollution
Use of Natural resources - water	Use of water in buildings including leisure centres and public toilets and grounds maintenance of public spaces	Local depletion of water supplies, potential impacts on hydrology (river levels, water table depth) and associated impacts on wildlife and amenity. Treatment and distribution also consumes energy and hence contributes to climate change
Use of natural resources - other raw materials/resources	Use of natural resources in service provision including use of paper, building maintenance and public space management	Potential pollution from manufacturing and transportation of materials. Also the impacts are diverse depending on which materials are used and in what context eg mixed materials that are not renewable, damage to habitats and biodiversity
Effects on biodiversity	Management of woodlands and commons, public spaces including parks, gardens and green areas around SDC housing stock. The restoration of the canal.	Potential to increase and protect biodiversity and adversely, there is potential harm if the activities are not effectively managed.
Releases to water	Surface water run off from buildings	Potential water pollution
Waste and by products	<ol style="list-style-type: none"> 1. Waste Management of Council waste 2. Waste management of residents waste 	<ol style="list-style-type: none"> 1. Potential to reduce Council waste sent to landfill and increase reuse and recycling 2. Impacts associated with the collection of residents waste disposal/reuse/recycling
Transport issues (both for goods and services and employees)	Use of transport to deliver services	Climate change and depletion of natural resources
Indirect environmental aspects (eg capital investments, contractors)	Promotion and awareness raising and advice to staff and residents. Regulator of pollution control and land use planning and development	Climate change adaptation and pollution control. Potential to increase and protect biodiversity and adversely, there is potential harm if the activities are not effectively managed. Possible improved environmental behaviours.

Profile of Stroud District

Area Profile

Stroud District is a largely rural area covering 476 kilometres square (175 square miles) in the south of Gloucestershire which is part of the South West region of England. The District is home to a population of approximately 110,700 residents living in just under 50,000 properties and about 3500 businesses. Three quarters of the district's residents live in or around the 6 market towns.

The eastern half of the District is part of the Cotswold Hills, which is designated as an Area of Outstanding Natural Beauty (AONB) and over 2,800 hectares of land is protected for its nature conservation value. These areas cover a wide range of habitat types from beech woodlands to natural limestone grasslands. To the west of the Cotswolds escarpment there is the low-lying landscape of the Severn Vale. The Severn Estuary and much of the foreshore in the district is a protected wildlife habitat under the RAMSAR Convention in addition to its designation as a Special Protection Area, a Site of Special Scientific Interest and a proposed Special Area of Conservation.

Water plays an important role in the natural environment. The district is bordered by part of the 42 kilometres of Severn Estuary coastline to the west, accessible to the open sea via Sharpness Docks. The vale formed by the River Severn is very low lying and there are extensive areas susceptible to flooding. The catchment of the Severn includes the Rivers Frome, Cam and Little Avon within the district. These rivers, and their tributaries, which flow down from the Cotswolds escarpment, provide an abundance of rich natural habitats and impressive landscape features. In addition the man-made canals running through the district are important landscape and wildlife corridors. The canal habitats will be further protected and enhanced during the current restoration of the Cotswold Canals.

The Council



The Council itself is a district council within the county of Gloucestershire. It provides services such as, environmental health, planning, social housing, leisure services and community safety. Household waste collection and recycling services are the responsibility of the Council and contracted out to Veolia. We do not provide social services, education, transport provision or highways as these are County Council functions.

We have 51 councillors covering 30 wards and these are elected by thirds over a 4-year period. The Conservative Party has overall control and the leader and cabinet govern the business of the Council, with individual councillors within the cabinet taking lead responsibilities for one of seven portfolios; Leader, Regeneration (Deputy Leader), Finance, Community Services, Planning and Environment, Housing and Climate Change.

The business of the Cabinet is scrutinised by 2 Scrutiny Committees: Strategic and Performance, reviewing decisions made by the Cabinet, monitor performance and investigate matters of concern to local people. Stroud District Council employs approximately 525 staff and this equates to 358 full time equivalents. Information regarding services provided by Stroud District Council can be found at www.stroud.gov.uk

Priority 1: —Priority 1: Sustainable Consumption and Production – ‘More for Less’

Breaking the link between economic growth and environmental damage is essential to this priority. It is important to continue to improve people’s growing understanding of environmental issues, and the importance of their roles as residents, consumers, community leaders and business owners. We need to work together with local people and organisations to demand products and services that have a reduced or low impact on the environment, and where possible encourage and support local business to deliver.

Our two areas of focus are Waste Management and Procurement.

Waste Management

Why is this significant?

Waste or rubbish is what people throw away because they no longer need it or want it. Almost everything we do creates waste both at home and at work. The fact that we produce waste, and get rid of it, matters. We can reduce the impact that waste has on the environment by preventing waste wherever possible and making a more sustainable use of the waste that is produced - reuse and recycle. The Council has a duty to collect waste from the 50,000 homes in the District and on average households in the district produce less waste than other householders in Gloucestershire. Figure 3 shows a summary of the District waste figures.

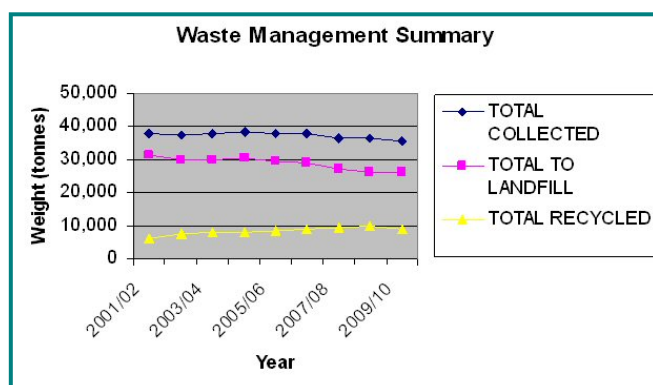
Figure 3: Domestic Waste Collection Summary Figures

Waste Summary Figures			
Year	Total Collected	Total to Landfill	Total Recycled
2001/02	37,647	31,358	6,288
2002/03	37,174	29,734	7,440
2003/04	37,980	30,070	7,909
2004/05	38,399	30,422	8,019
2005/06	37,873	29,574	8,298
2006/07	37,995	29,122	8,928
2007/08	36,565	27,331	9,387
2008/09	36,231	26,274	9,957
2009/10	35,302	26,206	9,096

Priority 1

The graph in Figure 4 shows the total tonnage of household waste collected since 2001 along with the amounts of waste recycled and disposed of to landfill. It shows the amount of waste going to landfill is continuing to decrease; the 2009/10 figure was 26,206 tonnes compared with 26274 in the previous year. In the Stroud District this equates to 533kg per household or 317kg per head of population, a drop of 2kg per household or 8kg per head of population since 2008/09.

Figure 4: Waste summary graph



The Council itself is also a creator of waste and again we look at ways to reduce the amount of waste produced of both hazardous and non hazardous waste. The Council's principle building - Ebley Mill produced 70 tonnes of waste during 2009/10 of which 41 tonnes was recycled. Based on full time equivalent employees of 358 in 2009/10, this is about 195kg of waste per employee, 112kg of this being recycled. The recycled waste included 370 litres of cooking oil - 30% of which was converted into bio diesel which is used by a delivery company - 3663, who deliver goods to Ebley Mill.

The Council produces very little hazardous waste but all of it is disposed of in accordance to legislation via licensed waste disposal companies. The exact quantities of waste disposed of in 2009/10, is not available as it is not weighed.

In previous years our main type of hazardous waste was fluorescent light bulbs. In 2009 most of the Mill's lighting was replaced with energy efficient bulbs and hence in 2010 the Council did not need to dispose of any fluorescent bulbs.

Other types hazardous waste include

- Sanitary & nappy waste bins
- ICT equipment - WEEE regs
- Waste arising from Pest control activities
- Fluorescent light bulbs
- Chemical containers arising from Dursley Pool activities

Other things that we have done over the last 12 months

We have continued to work with the County Council with regards to the Countywide Waste Strategy. We have also undertaken some initial investigations into private sector investment in anaerobic digestion facilities within the district to enable local food waste recycling and renewable energy production.

In an effort to promote the recycling of green waste, Stroud District Council's ground maintenance contractor Wyevale have undertaken more than 70 garden composting events around the District. At Stratford Park all the green waste produced in the park is shredded and reused as mulch on the shrub borders and the majority of seats and bins provided in the park are made from recycled waste plastic material.

Working with our Housing contractors Seddons, all paint containers are recycled into packaging. We were also part of a pilot scheme with Crown Paints to recycle empty paint tins into benches. One of these recycled plastic benches has been installed in one of the sheltered housing schemes. All new and replacement street name plates are made from recycled plastic.

Priority 2—Climate Change and Energy – ‘Confronting our greatest threat’

Climate Change is a very real and urgent global issue. To understand climate change it is important to recognise the difference between weather and climate. Weather is the temperature, precipitation (rain, hail, sleet and snow) and wind which change hour by hour and day by day. Climate Change refers to the changes in average weather and the nature of its variations that we experience over time.

The Council shares the UK Government’s commitment to reduce greenhouse gas emissions - the main ones being carbon dioxide and methane - as these are said to be one of the greatest causes of climate change. Climate change is linked to all that we do and is one of our 4 areas of focus in our Corporate Delivery Plan for 2010/11.

Energy Management

Why is this significant?

Energy Management has direct links to the management of our carbon emissions. Stroud District Council takes energy consumption very seriously not only because of the impact of carbon dioxide emissions on the environment but also because of the increasing impact of rising costs. Stroud District Council has several public buildings that it directly manages and is also a major landlord responsible for almost 5300 homes.

Of our Council controlled buildings most are either listed or in conversation areas. Our main office is a listed grade 2* converted woollen mill, though a beautiful building in a lovely setting it does present problems. It is difficult to control the heating and cooling of the building. In the community

- 75% of homes are owner occupied
- 15% are off mains gas
- 30% are pre 1930 with a combination of solid wall, sloping ceilings and little or no loft

And approximately 20% are also either listed or in a conservation area.

What are some the things we have done in the last 12 months?

Solid to Sustainable (S2S) - wins Green Apple Award

The aim of Solid to Sustainable (S2S) project was to find ways of helping to provide sustainable heating solutions to vulnerable households that are not connected to mains gas. We worked with E-on and a number local installers to install energy efficient heating in 43 homes. These homes were of mixed tenure - privately rented, rented from the council and owner occupiers. By focusing on an area with the greatest need and with a lot of similar types of housing, SDC were able to apply the economics of scale for the installation of the ground source heat pumps. A total of 37 ground source heat pumps (28 council / 9 owner occupiers) and 6 air to air heat pumps were installed. S2S project has helped to alleviate fuel poverty and raise the profile and knowledge of renewable technologies at a grass roots level.

The S2S project has been now recognised for its environmental best practice has been awarded a ‘Green Apple Award’. The Green Apple Awards are presented annually in recognition of companies, councils and communities carrying out projects that enhance environment and there were more than 500 nominations this year.

Priority 2

Renewable Energy Grants

Over the past few years Stroud District Council has offered small grants to households to install renewable energy installations in their homes. The grant scheme came to an end on the 31st March 2010 but over the three years it had been running it is estimated that the installed generating capacity is 989.52KWh or 0.99MWh.

Warm and Well

Gloucestershire Warm and Well began its work in October 2001 and is working to ensure as many people as possible are kept warm this winter, by making home owners and privately renting tenants homes more comfortable to live in and fuel efficient. Stroud District Council is the lead partner which since 2001 has helped over 20,000 household throughout the County. Figure 5 gives the total energy efficiency installations since 2001 and for 2009/10.

Figure 5: Resident Energy Efficiency Installations

	2009/10	2001 - 2009/10
Cavity Wall Insulation	250	1745
Loft Insulation	287	2774
Draught Proofing	10	247
Hot Water Tank Jackets	20	254
Condensing Boilers/CHS	12	221
TRVs (Sets up to 5)	3	665
Compact fluorescent lamp	0	2846
Total Measures	582	8752
Total Properties	507	4321

Stroud District Council and Energy Management

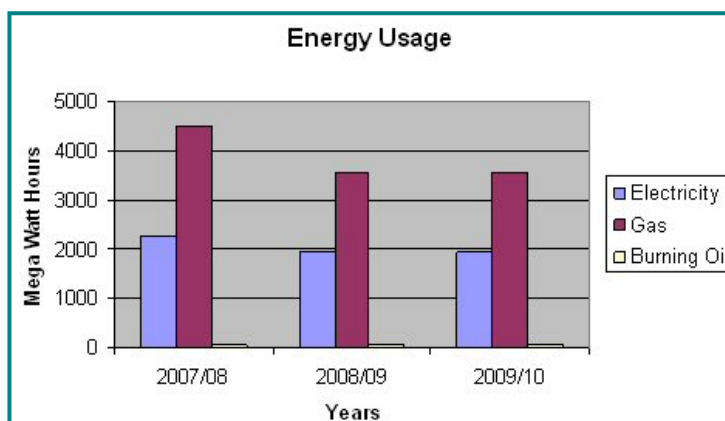
Of our Council controlled buildings most are either listed or in conservation areas. Our main office is a listed grade 2* converted 18 century woollen mill and our newest building Dursley Pool is 22 years old. So we do have a number of challenges with regards to heating and cooling of our buildings - air conditioning units are limited to areas such as the main server room in Ebley Mill.

We have undertaken a number of initiatives to reduce our energy consumption in our buildings including the installation of hand drier up grades in Ebley Mill, variable speed drive in Dursley Pool and voltage optimisation in both Dursley Pool and Stratford Park Leisure Centre. We own a second leisure centre at Stratford Park and although the management is contracted out, we work closely with management to improve the energy efficiency of the site. Figure 6 shows the energy consumption for the last 3 years across all SDC sites including Stratford Park Leisure Centre, which is owned but not managed by the Council.

Figure 6: Total Energy Consumption for Stroud District Council 2009/10

MWh	2007/08	2008/09	2009/10
Electricity	2252.845	1948.783	1925.182
Gas	4504.427	3554.512	3550.457
Fuel Oil	54.557	54.557	48.875

Figure 7: Total Energy Graph



Priority 2

Dursley Pool electricity consumption

Dursley Pool electricity consumption is included in figures 6 and 7. It should be noted that Dursley Pool electricity meter is believed to have malfunctioned during 2010 and that the issue is still in the process of being resolved between SDC and our supplier. Once resolved it may result in a reduction in the figure for electricity consumption compared with that quoted in figures 6 and 7. If this is the case a correction will be reported in next year's statement.



Energy Consumption per employee

EMAS III requires that energy use should be quoted per employee. The energy use for all buildings per employee is 15.437 MWh; however some buildings (such as leisure centres) consume large amounts of energy which do not correlate with staff numbers. Ebley Mill is the main offices and energy use for this building per employee is 3.35MWh.

Energy Advisory Panel

Given the number energy challenges expected to face the Council in the near future if it was decided that an elected member Energy Advisory Panel should be set up. The purpose of the Panel is to investigate solutions to the energy challenges facing both the Council and the wider community. At the Annual General Meeting of Council on the 20 May 2010, 12 members representing all parties were elected to the Panel.

So What Are We Going to Do Next?

- Replace existing PC's with Thin Client
- Replace the lighting in the Council Chamber
- Reduce the lighting use in Brunel Mall by closing over night
- Install variable speed drive at Stratford Park Leisure Centre
- Investigate alternative cooling of the server room

Climate Change

Over the past few years SDC has addressed most of the 'low hanging fruit' in terms of energy efficiency measures in our own operations and this has resulted in substantial carbon savings - a total of 440 tonnes for the 3 years 2007 - 2010. As the years progress considerable investment will be needed to achieve continuing reductions. During 2009/10 despite an exceptionally cold winter, improved data capture and further service improvements have resulted in a reduction in both buildings and transport emissions saving 111 tonnes of carbon.

Figure: 8 Emissions from Energy District Council 2009/10

	2009/10	2009/10 Per Employee (358 FTE)	2008/09
Total buildings energy MWh	5,607.846	15.66	5,668,070
Total CO2 emissions (tonnes)	1,719.166	4.8 tonnes	1,749,555
Total NOx emissions (kg)	2,829.33	7.9 kg	2,895.29
Total PM10 emissions (kg)	76.59	0.21 kg	78.46

Priority 2

Figure 9: Total Emissions from Buildings

	2009/10 Emissions from Buildings Energy	2009/10 Emissions from Transport	Total 2009/10 Emissions	Emissions per Employee (358 FTE)
Total CO2 emissions (tonnes)	1,719.166	1118.343	2837.5 tonnes	8 tonnes
Total NOx emissions (kg)	2,829	3929	6758 kg	19 kg
Total PM10 emissions (kg)	77	164	241 kg	0.7 kg

Target 2050 Project

Target 2050 was three year project which implemented the Council's Climate Change Strategy. The Project had 3 strands:

- Domestic strand 2008-10, extended to 2011 included 20 Exemplar homes / grant scheme and creation of an installer network and supply chain support
- SME Business strand 2008-09 extended to 2011 - surveys, action planning support follow up on installation progress
- Community strand 2008 - 09 only included building surveys, fundraising support and improvement grants

REIP 2050

The success of the domestic strand of the project enabled SDC to lead a similar initiative and receive additional funding from the South West Regional Efficiency and Improvement Programme (REIP). The REIP 2050 project covers 6 local authorities, four from Gloucestershire and the unitary authorities of South Gloucestershire and Wiltshire.

Thirty exemplar homes - approximately 5 in each area, have been chosen to improve the 'energy efficiency' of the property. The properties are deemed to be a typical example of the type of property found in that area. The householders have also agreed to take part in events that promote the different measures that have improved their homes.

Stroud Eco-renovation Open Homes

This was an opportunity for the public to visit homes around Stroud, see renewable energy in action, discuss energy efficiency and get advice on eco-renovations. There was a great range of micro renewable technologies, eco-renovation and new build with everything from solar water heating to external insulation. Twenty homes were open and were visited by 600 people. More info at: http://www.stroudopenhomes.org.uk/?page_id=74

Carbon Management Programme

The Carbon Management Plan (CMP) is the main output from the Council's involvement in Round 6 of the Local Authority Carbon Management Programme, overseen by the Carbon Trust. The CMP sets out the key activities required to deliver the Council's target of reducing its direct carbon emissions by 35% by the end of 2010/11 measured against a 2007/08 baseline. A core team of officers meet on a regular basis to discuss new ideas and progress the Plan.

Most of the projects set out in the March 2009 [Carbon Management Programme](#)

have either been completed or will be completed by 31 March 2011 such as replacing PCs with Thin Client - see glossary.

Next Steps

- Investigate funding options for renewable energy schemes
- Issue a tender for renewable and energy efficiency measures on SDC homes
- Understand the learning from the programmes such as the PAYS pilot and the Target 2050 initiatives

Priority 3 - Protecting our Natural Resources and Enhancing the Environment – ‘Clean, Green and Safe’

Stroud District is fortunate to contain a wide range of habitats (such as woodlands and rivers) and species of animals and plants. The west of the district borders the Severn Estuary which is a Site of Special Interest (SSSI). About half the District is within the Cotswold Area of Outstanding Natural Beauty (AONB) and there are 163 recognised areas as sites of nature conservation interest. Stroud is responsible for helping protect green space through planning and the management of commons and woodlands.

Many other Council activities will have an effect on biodiversity both directly through management practices such as parks management and land drainage, through to indirect impacts related to the types of goods and materials purchased, policies developed and the way that services are delivered.

The maintenance of the Stratford Park grounds is based on an environmentally sound management system and the use of all chemicals is kept to a minimum. Stratford Park celebrated its 75th year in 2010 with a Nature Festival with Mike Dilger a presenter from the BBC, One Show opening and taking part in the digging of the a new nature pond.

The current grounds maintenance contract for Stratford Park, is undertaken by Wyevale Grounds Maintenance and they an integral part of the Stratford Park Management Committee. The overall standard of the Park has improved and this is reflected in the Council's latest Green Flag award, the seventh in successive years. Wyevale as also been awarded for the BALI award - the British Association of Landscape Industries (BALI) for the landscape management they have undertaken at Stratford Park.



Facts about Stratford Park

- The grounds of Stratford Park cover 56 acres.
- Stratford Park has its own wildlife watch club for children of junior school age who meet every month to undertake activities linked to wildlife -from planting new trees to encouraging wildlife habitats
- There are 170,000m² of grass and 4,000m² of shrub and flower border areas to be maintained.
- There are more than 800 trees in the park.
- The bowling green was constructed in 1936.
- There is a monthly newsletter on the Biodiversity of the Park
- All the green waste produced in the park is shredded and reused as mulch on the shrub borders.
- The majority of seats and bins provided in the park are made from recycled waste plastic material.
- Each year, over 30 new trees are planted in the park to provide for future generations.
- Chemical weed control has been greatly reduced as a result of increased manual sweeping of paths and hard-standing areas.

Priority 3

Facts about the Greenspace in Stroud District

- Use of Land in m² of built up area
- Population = 110,700
- Total area of SDC = 476km² = 4.30m² per head of population
- Total area of greenspace = 414km² (87%) = 3.74m² per head of population
- Total area of built and other = 62km² (13%)

What are we doing next?

- Work with Gloucestershire Wildlife Trust to undertake a biodiversity assessment of all assets to help understand importance of assets in terms of species.
- Continue with the redevelopment of the Canal

Water Management

Water plays an important role in the natural environment. Water resources in the UK and internationally is a growing concern as there is continues to be problems with availability and distribution of clean water. The average European uses **200 litres** of water every day for their drinking, washing and cooking and based on current trends over the next 20 years we will use **40% more water** than we do now.

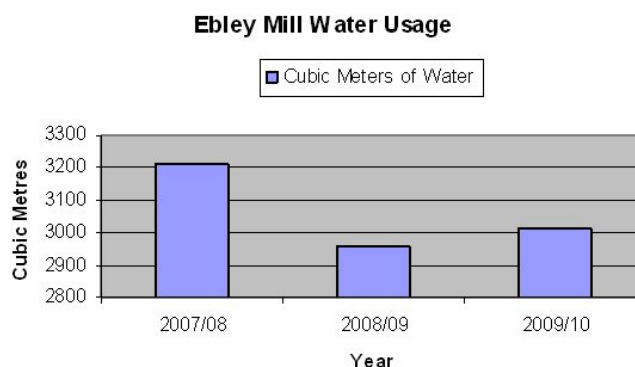
There can be significant impact on the built and natural environment from the need to maintain water infrastructure. The management of water supplies can have both a positive and negative impact on biodiversity locally and internationally, depending on the management approach.

The District is bordered by 42 kilometres of Severn Estuary coastline to the west, accessible to open sea via Sharpness Docks. The Vale formed by the River Severn is very low lying and extensive areas are susceptible to fluvial flooding.

The catchment of the Severn includes the Rivers Frome, Cam and Little Avon the within the district and these rivers, and their tributaries, flow down from the Cotswolds escarpment in the east of the District.

The Council consumes water across a range of different activities from public toilets to swimming pools. Our water consumption figures for our main site - Ebley Mill for the last three years is detailed in figure 10. During 2008/09 we installed a number of water saving devices including water hippos in all flush toilets and push taps replaced turn taps when maintenance required. These measures reflect the decrease in usage between 2007/08 and 2008/09. In August 2009 Ebley Mill was subject to an internal flood following a water pressure surge which caused a water dispenser to malfunction and hence we saw a small increase in the 2009/10 usage figures. The total of 3012 cubic meters equals 8.4m³ per employee.

Figure 10: Ebley Mill Water Usage



The other main users of water are the public toilets and Dursley Pool. During 2009/10 the district used 10626m³ of water across 10 different sites. We have a continued a programme of refurbishment of all our toilets installing the most resource efficient equipment and have been rewarded with 'Loo of the Year' award for all of the ones refurbished. Dursley Pool used 6593m³ of water during 2009/10. Water consumption data for Stratford Park Leisure is not available for 2009/10.

Priority 3

Cotswold Canal restoration

Water and biodiversity management is also important in the restoration of the 6 miles of canal that run through the District. During 2009/10 the projects undertaken included:

- A new bridge incorporating bat bricks
- Canal dredging to reduce winter flooding down stream and all dredging have been removed by barge to avoid the need for road transport
- Vegetation clearance was started at the end of September at the conclusion of local bird nesting
- Treatment of invasive species - giant hogweed and Japanese knotweed
- Work was started on the Flood Risk assessment of the canal corridor



During 2010/11 there will be

- A creation of a park at Cope Chat Field, Cainscross with new tree planting and improved biodiversity habitat
- Creation of more embayments along the canal
- A provision for a new fish passage between the canal and the river Frome to encourage fish migration in line with Environment Agency requirements
- Treatment (by volunteers) of the Himalayan balsam along the canal corridor



Priority 4— Priority 4: Creating Sustainable Communities – ‘From local to global’

What do we mean by the term ‘Sustainable Communities’? Sustainability means integrated long term thinking - doing things that have social, economic and environmental benefits, rather than trading progress in one area for problems in another. Crucially it is about taking positive action now to turn around unsustainable trends. Truly sustainable communities are ‘healthy, productive, socially just and live *within environment limits*. Creating a sustainable community will not happen over night but it is a building process that will happen over time and SDC has a central role to play as a planning authority to implement its and the Government’s policies.

Transport Management

Why is this significant?

One our main challenges is finding practical ways in reducing the amount of car travel required to access services. As a rural district with limited public transport we have a high dependency on the car.

Stroud District Council has to deliver services but is also mindful of keeping mileage to a minimum. During 2009/10 Managers were challenged to reduce their service mileage by 3% based on the previous 2008/09 usage. The graph in Figure 11 shows the mileage claimed by both officers and members on Council business and it demonstrates a deduction in mileage of just over 10%. In Figure 12 the table shows the total kilometres and emissions for all travel including staff and members, fleet and all contractors.

Figure 11: Mileage for Officers and Members

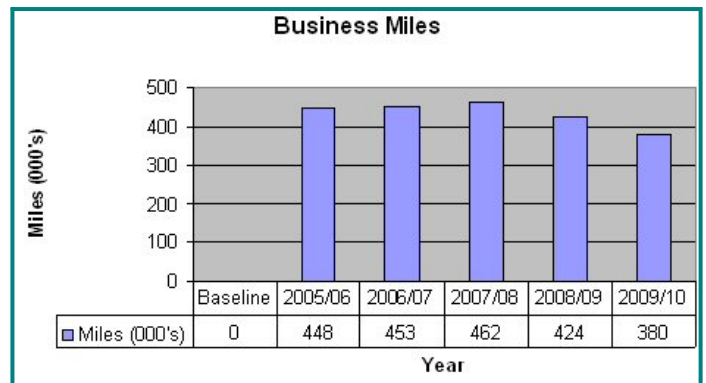


Figure 12: Transport Emissions for all SDC business

	2009/10	2009/10 Per Employee (358 FTE)	2008/09
Total business kilometres	3,389,424 (2,106,090 miles)	9468 (5883 miles)	3,459,147 (2,149,414 miles)
Total CO2 emissions (tonnes)	1151.64	3.2 tonnes	1,125.25
Total NOx emissions (kg)	3929	11 kg	3795
Total PM10 emissions (kg)	164	0.46 kg	138

Priority 4

Pool bike scheme

As part of the Environment Strategy, SDC purchased two pool bikes and associated safety equipment, for staff to use either for work or during lunchtimes once they have received competency training. A number of staff have taken up this opportunity of using the pool bikes.

Eco designed homes

In the community SDC has helped water and energy conservation in 16 new affordable homes. The new properties were built to replace 8 concrete homes that had become unfit for habitation. The new homes included rain water harvesting for toilets and water butts for the garden and solar panels were installed for hot water. The properties were constructed using an inventive off site manufacturing process which enabled them to be built 60% quicker than traditional building methods. The development was the first in the South West to use this innovative technique. Sections of the homes were delivered to the site fully finished with kitchens and bathrooms pre-installed and services, such as plumbing, gas and electricity already fixed and tested.

Greener homes were also delivered through our Solid to Sustainable (S2S) Project which used the economies of scale by linking different tenure of homes, in an off mains gas area, to install renewable heating systems - see page 10.

PAYS - Pay As You Save

Stroud DC was one of the five pilots selected by the Department of Energy and Climate Change (DECC) to deliver one of the UK first ever trials. DECC keen to learn whether the PAYS scheme would be attractive to consumers and how.

Around 50 homes in the Stroud District got the opportunity to access finance to invest in energy makeovers.

The Home Energy Pay As You Save pilots gave households the opportunity to invest in energy efficiency and microgeneration technologies in their homes with no upfront cost. Householders make repayments spread over a long enough period so that repayments are lower than their predicted energy bill savings, meaning financial and carbon savings are made from day one. The learning from all the pilots have helped inform the now Government's Green Deal initiative.

Green Fleet Review



In 2009 with the help of the Energy Savings Trust we undertook a review of our business miles. The purpose of the review was to understand the areas of opportunity to reduce the organisation's carbon footprint, transport costs and corporate liability, particularly in the area of grey fleet. The resulting report made a number of recommendations which are now being considered.

System Thinking Review of site visits

SDC undertakes approximately 47,000 customer visits each year and in 2009/10 this equated to 497,517 miles. Following the Green Fleet Review SDC is doing a systems thinking review approach to check the value of the visits being made. We are looking at ways to ensure these visits are cost and carbon effective and give the most value to both the Council and the customer.

Priority 5—Priority 5: Keeping the Council and the Local Community Focused on Environmental Limits – Let’s not forget how important the issue is’

In our 2007 Environment Strategy we stated the importance of taking every opportunity to continually improve. Our Corporate Delivery Plan has always had an environmental focus but at the end of 2009/10 it was decided to refresh the priority areas from REACH to CARE.

Regeneration
Environment
Affordable Housing
Community Safety
Health & Well Being



Climate Change
Affordable
Resources
Economic Recovery

The Council has demonstrated its achievements under the Environment priority in this and previous years annual Environment Statement. Working in partnership with other public agencies, community and voluntary groups or with local businesses has been pivotal in getting the environmental message across. One such success has been our PYN events which continued in 2009/10.

Pride in our Neighbourhoods (PYN) Events

Pride in Your Neighbourhood events took place across the district. Two-day events were held in Nailsworth, Dursley, Cashes Green and Paganhill, whilst one-day events took place in Brimscombe and Thrupp and Berkeley. Run by the Council as part of the Stroud Safer Stronger Communities Partnership, the events included practical help and guidance on environmental issues such as abandoned vehicles, recycling, refuse collections and removal bulky items that would have otherwise been fly-tipped.

Local Development Framework

The Local Development Framework or 'LDF' is the term used to describe the set of documents which will eventually include all of the planning authority's local development documents, one of which will be the Core Strategy. As these new documents are adopted by the Council, they will eventually replace the Stroud District Local Plan adopted in 2005.

LDFs, which were introduced by the Government in 2004, are intended to deliver sustainable development whilst reflecting the needs of local communities. They aim to deliver 'spatial planning', that is they must take into account social and environmental factors such as health and housing need and should not be purely focussed on the regulation and control of land. The Core Strategy for the Stroud District is Climate Change led. The challenge facing the Council is to ensure that future growth is managed in a sustainable way, making provision for homes, jobs and community facilities, whilst at the same time protecting and improving our environment and addressing the issues associated with climate change.

During 2009/10 we embarked on a round of consultation events giving the community - both residents and businesses a chance to comment the direction of future growth and development in the Stroud District. This round of consultation looked at a range of possible routes that we could take in order to accommodate around 2,000 additional homes by 2026, as well as encouraging the generation of about two new jobs for every new household built. SDC has appointed consultants to carry out both energy and carbon footprints of the different development options.

Priority 5

Environment Awareness and Training

Energy Management Training

SDC building managers joined other managers from across the Gloucestershire Local Authorities and took part in a 3 day Energy Management training session. The course focused on two key themes:

- Identification and characteristics of major energy using systems in the workplace
- Establishing and operating an energy management system

Staff and the Environment

All new employees attend a two day induction programme and as part of this, new employees are informed of the Council's commitment and the importance of their role and the affect that it has environment. All employees have regular updates on environmental issues through the 'Enews' - electronic newsletter and 'Proud of Stroud' our corporate communications meeting.

At one of the 'Proud of Stroud' meetings, staff were given a presentation and a quick quiz on Energy and Environmental Awareness. The presentation also looked at the initiatives that were being undertaken by different services such as the S2S project and also at how staff could improve their own energy consumption both at work and at home.

'My Energy'

SDC has a voluntary staff network called 'My Energy' which has undertaken a number of initiatives to engage staff and reduce carbon emissions from supporting car sharing schemes to turning off office appliances. The group also lends energy monitors to colleagues to encourage energy efficiency in the home. SDC also supported this scheme in the wider community by purchasing a number of monitors for the local libraries to loan out to residents.

Climate Change Awareness Training

SDC together with other Gloucestershire Councils participated in a number of Climate Change workshops. The purpose of the workshops was to raise awareness of how to adapt and mitigate against climate change. The Climate Outreach Information Network (COIN) ran the sessions which were for both staff and members.

Material Efficiency

Paper

Stroud District Council is not in the manufacturing business however, paper is the main material commodity. SDC uses on average 780 boxes of paper per year or 9750kg; this equates to 9750 divided by 358 full time equivalents = 27kg per FTE or just over 2 boxes of paper per employee in 2009/10.

We have introduced a number of measures to reduce the overall paper consumption including setting all photo copiers to doubled sided, paying invoices by BACS (bank transfer), on line planning applications and online Council Tax billing for those who request it. Stroud District Council has also policies in place to ensure that where possible, environmentally friendly materials are selected. This includes using FSC certified timber in housing repairs or refurbishments and the use of peat free composts in the parks and gardens.

What are we going to do next?

- Continue with the member and staff environment training and awareness
- Investigate the feasibility of an anaerobic digestion facility in the district
- Consider a business case for providing energy services

Glossary

- **Affordable Warmth** - is the ability to heat your home to an adequate level for household comfort and health, without developing a debt as a result. The lack of affordable warmth is known as “fuel poverty”.
- **Affordable Warmth Partnership** - The Partnership brings together 7 Gloucestershire and South Gloucestershire local authorities, Severn Wye Energy Agency Ltd. (SWEA), Gloucestershire and South Gloucestershire Primary Care Trusts and many other community organizations and groups to tackle fuel poverty
- **Business Miles** - These are recorded miles by officers and elected members who use their own vehicles for Council business
- **DCLG** - Department for Communities and Local Government
- **DECC** - Department for Energy and Climate Change
- **EMAS** - Eco Management and Audit Scheme. It aims to promote continuous evaluation and improvements in the environmental performance of participating organisations
- **EMS** - Environmental Management System
- **Fleet Miles** - These are miles recorded by officers using Council owned or leased vehicles
- **NACE** - The NACE code system is the European standard for industry classifications and was introduced in 1970. In 1990 a revised version became applicable. NACE stands for "Nomenclature Generale des Activites Economiques dans l'Union Europeenne" (General Name for Economic Activities in the European Union). From 2008 this changed and is based on "International Standard Industrial Classification of all economic activities" (ISIC) of the United Nations
- **NI** - National Indicator was a government measurement of Local Authority performance. There was a suite of 198 indicators covering various aspects of local government performance including environmental protection. However all National Indicators will stop on 31 March 2011 and remaining NI associated data collections will also stop on the 31 March 2011
- **Outsourced Miles** - These are recorded miles undertaken by contractors for Council business e.g. waste collection.
- **Quartile Position** - This reflects the ranking position compared with all other England local authorities. The first quartile is always the best and the fourth the worst for performance
- **RAMSAR** - The Convention on Wetlands, signed in Ramsar, Iran, in 1971, is an intergovernmental treaty which provides the framework for national action and international cooperation for the conservation and wise use of wetlands and their resources.
- **Server Virtualisation** - server virtualization means putting many virtual computers on to one physical computer. The software that accomplishes this “fools” the operating system of the virtual computer that it is running on physical hardware. Virtualization software manages the access each virtual server has to the physical hardware without the virtual computer being aware of it.
- **SWEA** - Severn Wye Energy Agency
- **Thin Client** - Thin Client Technology or Server Based Computing enables any computer to access Microsoft Windows based applications and Unix based applications, like Word processors, Spreadsheets, Accounting programs, from any Web Browser over the Internet or a Corporate Intranet, without having to install the application on every desktop system. Another key benefit of this technology is reduced energy consumption as desk top units can be very small and low powered
- **Variable Speed Drives** - A variable speed drive is a piece of equipment that regulates the speed and rotational force, or torque output, of an electric motor.

Appendix 1—Environmental Policy and Environmental Management System

Environmental Policy 2010

Stroud District Council is committed to continuously improving the environment by reducing pollution and mitigating the impacts and adapting to the effects of climate change while encouraging and supporting others to do the same, for the benefit of residents, businesses and visitors to the Stroud District.

The Council has direct powers and responsibilities in planning and land use, environmental health, waste management, housing, leisure and economic development. It is also a significant resource user and employer. It therefore recognises that its operations and service delivery have a major impact on the environment.

Stroud District Council will achieve its commitment by maintaining an environmental management system - currently **EMAS** (Eco-Management and Audit Scheme) and ISO 14001- to continuously monitor progress. The Council will also ensure compliance with all relevant environmental legislation, guidance and best practice principles to fulfil its statutory environmental responsibilities. In this respect the Council will specifically endeavour to:

- Reduce the Council's own consumption of natural resources and energy and encourage others to do the same
- Support environmental initiatives that improve health and well being
- Prevent environmental pollution and reduce emissions of CO₂ and other greenhouse gases from council buildings, operations and activities
- Reduce the environmental impact of our supply chain and encourage and where possible require our suppliers and contractors to minimise the environment impact of their goods and services
- Reduce the volume of waste generated both by the Council and within the District
- Increase the amount of renewable energy generated within the district
- Protect, conserve and enhance our natural environment and its biodiversity whilst improving our parks and open spaces, public rights of ways and green corridors
- Plan and adapt the district to the effects of climate change
- Encourage a sustainable built environment through good planning policies and effective application of building regulations
- Minimise the environmental impacts of travel by developing sustainable travel solutions
- Provide information and support to both the public and staff to encourage interest in environmental matters

Appendix 1

In order to achieve this, the Council will operate an environmental management system that will be integrated into the corporate management framework and which will:

- Apply to all activities undertaken by the Council, including contracted out services as new contracts are negotiated
- Set objectives and implement action programmes in order to minimise the negative environmental effects and increase the positive effects of the Council's activities

Environmental Management System (EMS)

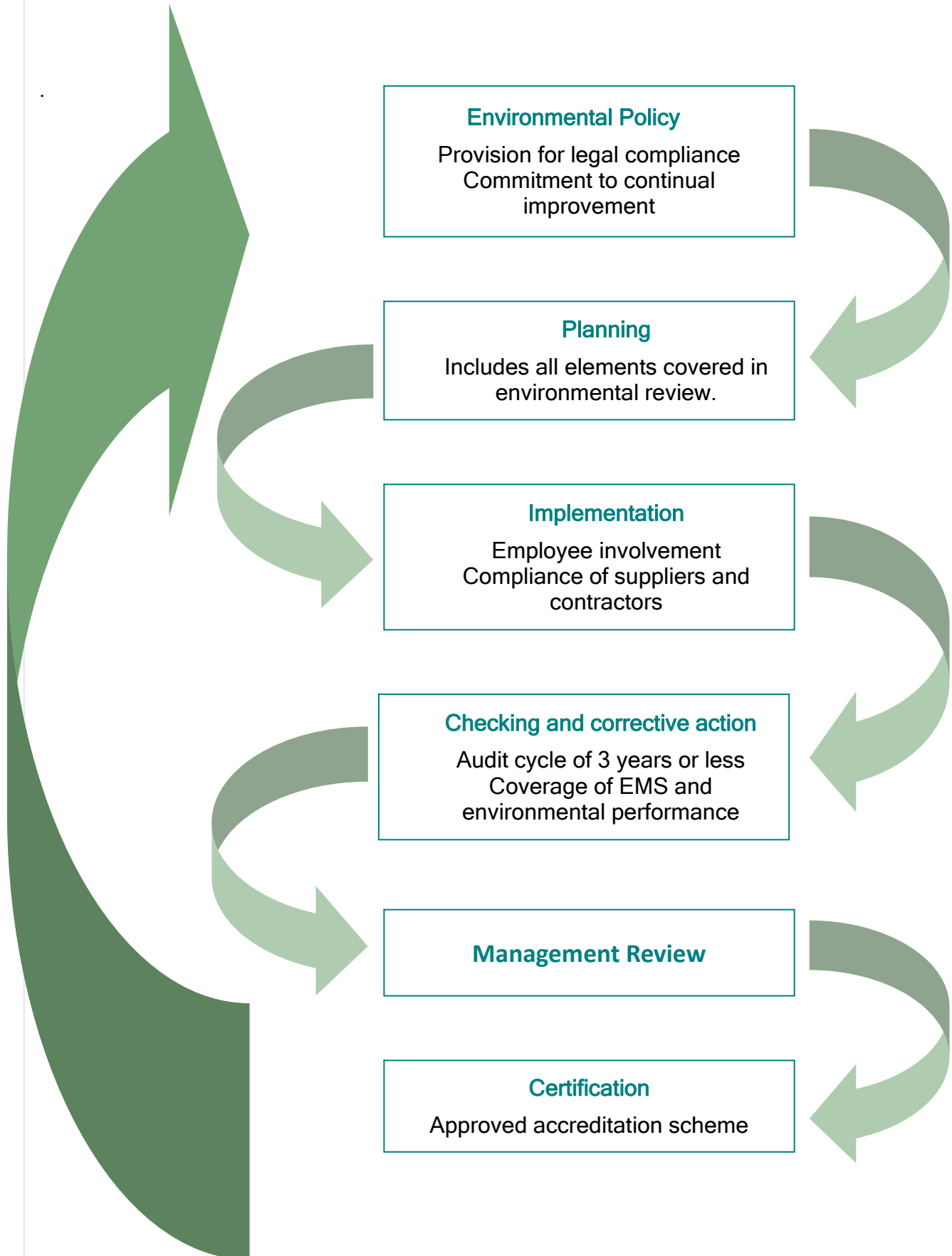
The Environmental Policy provides a framework for the Council to improve its environmental performance. To help us implement the environmental policy and help improve our impacts on the environment wherever possible we have established an Environmental Management System (EMS) to meet the requirements of the Eco-Management and Audit Scheme (**EMAS**) and the international standard ISO14001.

The EMS helps us to identify the important impacts we have on the environment, identify possible improvement measures and to put in place working practices to ensure we can maintain the EMS through the years and monitor our performance. Stroud District Council first achieved registration to **EMAS** in March 1999. This is our 11th Environmental Statement. An independent verifier has checked all the statements to ensure compliance with the **EMAS** scheme.

The Environmental Management System links where it can to existing management systems within the Council. As part of the EMS we undertook a review of our impact on the environment and a set of 8 improvement objectives were developed - Energy Management, Water Management, Waste Management, Biodiversity Management, Pollution Management and Corporate Management. With the advent of our new Environment Strategy each of these objectives has been assigned to a strategy priority.

An environmental programme of improvement activities was established under each of the objectives. In order to ensure the environmental programme is achieved and the EMS maintained and monitored, the activities in the Environmental Programme are encompassed in individual service plans. These service plans are monitored and audited on a regular basis. The assessment of environmental training needs has been incorporated into the annual staff appraisal system set up as part of the Council's qualification for Investors in People.

Appendix 1




Appendix 2

Priority 1: Sustainable Consumption and Production - More for Less Waste Management

Environmental Aspect	Improvement Target and Action	Progress	Explanation	On Target
EMS Procurement	Revise the Procurement Strategy for Council to adopt, to include sustainable procurement arrangements	Complete	Cabinet report June 2009 - Procurement Strategy now includes sustainable procurement element.	
	Ensure that redevelopment of any of the sites in Minchinhampton will address, as a minimum, the requirements of the Building Regulations which will be applicable from 2010	Complete	A project manager has now been appointed to lead the working group and to take proposals forward. This will act as a model for the other two sites.	
	Subject to funding and interest from industry support ACORN training for local building/maintenance contractors	Not Started	This project was not progressed due to a lack of funding	
EMS Waste Management	To ensure that forthcoming Housing Management contracts deliver improvements to carbon and waste reduction	Complete	No notes on system	
	Reduction in the amount of office waste going to landfill	On Going	Overall 7% more waste was recycled during 2009/10	

Appendix 2

Priority 2 : Confronting our greatest Threat - Climate Change and Energy Management

Environmental Aspect	Improvement Target and Action	Progress	Explanation	On Target
	Install hand driers in Ebley Mill	Complete		
	Install electric pool cover for Stratford Park	Complete	Electric Pool Cover installed and staff trained to operate	
	Climate Change appraisals for all major capital and revenue projects	Complete/on going	Potential budget savings and growth items have been assessed. There are currently no capital schemes going forward	
	Complete District wide Energy Audit and use this to develop the new Core Strategy. (CDP1.5).	Complete	The study report has been received and findings are being used to inform development of appropriate Core Strategy content	
	Re-launch' the Target 2050 business programme with SWEA and enable 100 local businesses to receive energy audits over the next 2-years. (CDP1.1)	Complete	Target 2050 business project contracted to SWEA	
	During the budget round to decide whether to continue investing in the Target 2050 Domestic programme, which is helping local homes reduce their carbon emissions by 60%. (CDP1.1)	Complete	Agreed at December 2009 Cabinet meeting to continue to fund the Domestic element of the Target 2050 project	
	Ebley Mill - Hydro-electricity. Secure adequate funding and resources and ensuring a sound business case is put forward explaining all potential benefits and value at stake.	Ongoing	Although the scheme in it's original form was no longer viable, changes to the feed in tariffs during the year have made the option of a reduced head height potentially viable. Option of Council borrowing to fun scheme to be explored	




Appendix 2

Priority 2 : Confronting our greatest Threat - Climate Change and Energy Management

Environmental Aspect	Improvement Target and Action	Progress	Explanation	On Target
	Subject to funding (HRA + external grants) install up to 50 ground source heat pumps in Housing Revenue Account (HRA) stock over the next 2 years, commencing in Frampton on Severn.	Ongoing	33 ground source heat pumps were installed - 24 in council homes & nine in private homes. Plus a further 6 air to air, 2 solar thermal were installed in Frampton. It hoped that this will continue during 2010/11	
	Install energy saving transformers at Dursley Pool and Stratford Park	Complete	Installations Complete at both sites in December 2009	
	Lighting management of Brunel Mall Multi Storey Car Park	Ongoing	Installation of exit barrier disrupted by continued vandalism. Works in progress to automate existing roller shutter. Consultation in progress with town centre manager	
	Undertake feasibility studies to ascertain if Stratford Park Leisure Centre and Dursley Pool are suitable for variable speed drive	Complete	Installation of variable speed drives to main pool pumps	
	Consolidate the storage of the Museum collection as per the Carbon Management Programme	Ongoing	Review taken place and action plan being developed, with a view of reducing storage space	
	Undertake a feasibility study Combined Heat and Power (CHP) installation at Stratford Park as per the Carbon Management Programme	Complete	Carbon Trust undertook a survey of SPLC - findings indicated a number of measures that could be taken to reduce emission and energy usage	
	Refurbish a further two public conveniences (Stratford Park & Bedford Street) installing the most resource efficient (water & electricity) equipment subject to funding	Complete	Both Bedford Street and Stratford Park toilets have been refurbished to a high standard. Stratford Park toilets have received a 5 star award from the British Toilet Association	
	Implement the Thin Client programme (Server Based Computing)	Ongoing	Thin Client Technology or Server Based Computing is being introduced across the Council. It is anticipated to be Completed by March 2011.	

Appendix 2

Priority 3: Clean Green and Safe - Protecting our natural resources and enhancing the environment

Environmental Aspect	Improvement Target and Action	Progress	Explanation	On Target
	Deliver 4 'Pride in your Neighbourhood' (PiYN) events. (CDP3.1)	Completed	4 events undertaken - Forest Green, Dursley, Cashes Green & Paganhill	
	Further develop the role of the Neighbourhood Wardens in managing 'grot spots'	Complete and on going	All wardens continue to be active in identifying and monitoring 'grot spot' areas	
	Let and operate the new abandoned vehicle contract.	Complete	New 3 year contract let. All abandoned vehicles removed within 24hours (prev. 48hours)	

Appendix 2

Priority 4 : From Local to Global - Creating Sustainable Communities

Environmental Aspect	Improvement Target and Action	Progress	Explanation	On Target
	Improve shower/changing/locker facilities for walkers & cyclists reference the Green Travel Plan	Complete	Agreement with a neighbouring gym to provide facilities	
	Once Ebley Wharf Complete relocate cycle rack to old approach road	On going	Ebley Wharf is yet to be Completed	
	Once Ebley Wharf Complete establish a clean cycle link to Ebley Mill	On going	Ebley Wharf is yet to be Completed	
	Cycle facilities review for customers of Stratford Park	Complete	No need for further provision	
	Reporting staff and members business miles to assist National Indicators 185 and 194	Complete	Information submitted to Central Government via County Council	
	Identify the process for developing a 'utility' cycle strategy to inform the LTP3 and SDC planning process	Complete	The process has been identified. A consultant has been commissioned to survey and evaluate potential utility cycle routes and recommend actions to lead to their implementation.	
	Take part in national Green Travel Week with events and promotions. Work more closely in future years with the 'Stroud District GTW'partnership group to help promote to other key employers in the District.	Complete	The event took place from 15th June - 19th June inclusive	
	Establish Green Travel Plan Hub pages, offering staff options for meeting their travel to and at work needs.	Complete	Website contains all Green Travel information including the Tax Free bike purchase scheme, Liftshare, Traveline, and much more. A useful standing resource for all staff	
	Establish 'Back2Bike' Confidence training programme for those who haven't cycled for a while. Annual course offered with bike maintenance workshops.	Complete	Training though initially delayed due to lack of qualified trainers, Transition Stroud have now been contracted to delivery sessions to staff	
	Provide a pool of cycles for us at work / in lunchtimes (could include electric and folding options)	Complete	Pool bikes purchased with user group established to manage bikes	
	Negotiate cost / discount facility for staff requiring walking or cycling equipment	Not complete	Not have staff resources to dedicate to this particular action	
	Establish and promote Lift-Share including allocating dedicated car park spaces at Ebley Mill.	Complete	Lift share car parking spaces allocated and extensive promotion of car sharing undertaken	
	3% Reduction in business miles	Complete	An overall total reduction of 10 % was achieved based on the 2008 figures	

Appendix 2

Priority 5: Lets not forget how important the issue is - Keeping the Council and the local community focused on environmental limits

Environmental Aspect	Improvement Target and Action	Progress	Explanation	On Target
	Deliver Core Strategy in accordance with timetable set out in scheme	On going	Consultation on background papers Feb - March 2010	
	Monitor recovery of abandoned vehicles against contract requirements	Complete	Contractor achieving criteria	
	Review meetings cycles and administration with the view to reducing waste and carbon	Complete	Civic Timetable table reviewed. Meetings at minimum requirements and no increase to date. Number of paper copied now reduced with greater use of website. Meetings cancelled due to lack of business.	
	Produce a 'State of the Environment' using the Audit Commission basket of indicators	Complete	The 'state of the environment' has been included in the EMAS annual statement	
	Carbon Footprint - Management Plan and National Indicator 185. Finalise the procedure for NI 185	Complete	Procedure for NI 185 has been Completed and is available to staff on the HUB	
	Include an environmental focus within the Engagement Strategy	Complete	Cabinet resolved to adopt the Community Engagement Strategy at their June 2009 meeting. The Strategy included an environmental focus.	
	Clarify the Council's position on the Sustainable Communities Act	Complete	SDC have formally agreed to 'opt in'. Have submitted a proposal regarding the Reform of the Housing Revenue Account Subsidy arrangements to the LGA	
	Continue to support the LSP Think Tank	Complete	No further inquiries undertaken. Will support LSP TT when new enquiry tasked	
	Maintain EMAS & ISO14001 accreditation	Complete	EMAS & ISO 14001 accredited	

Deadline for submission of the next statement

We will submit our next Environmental Statement before March 2012. It will cover the period from April 2010 to the end of March 2011.

Name of accredited verifier

This statement has been verified independently and all the information in it checked. This means that you can be confident that you are receiving accurate information about our environmental performance.

Date Statement validated: 31 March 2011

Our accredited verifier is:

Bureau Veritas Certification UK Ltd
Accreditation Number: UK-V-0003
Great Guildford House
30 Great Guildford Street
London
SE1 0ES

Contact for more information:

If you have any questions about this statement please contact:

Barry Wyatt
Strategic Head (Development Services)
Stroud District Council,
Ebley Mill,
Stroud,
Gloucestershire,
GL5 4UB

Tel: 01453 754210

email: Barry.Wyatt@stroud.gov.uk

web : www.stroud.gov.uk