



For further information relating to these issues please contact:



**Environmental Protection Service  
Stroud District Council  
Ebley Mill  
Westward Road  
Stroud  
Glos  
GL5 4UB**



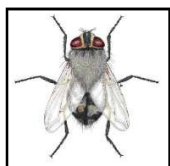
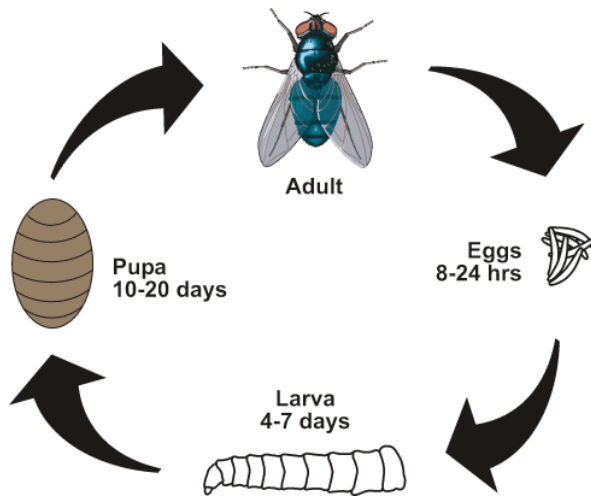
**(01453) 754478**



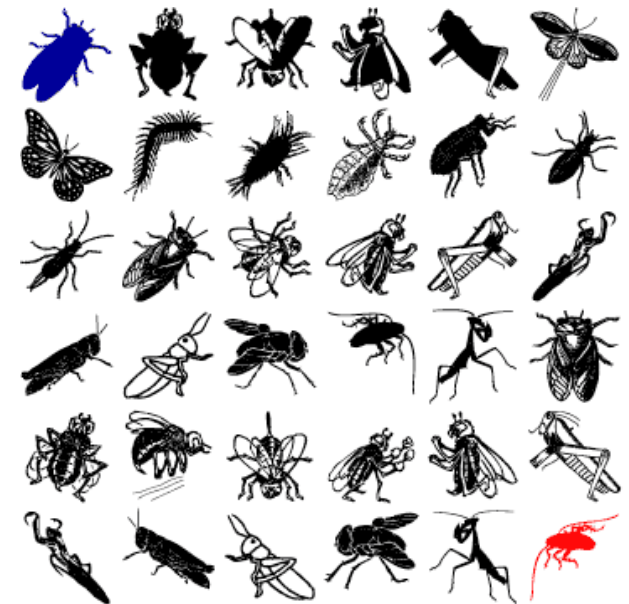
**www.stroud.gov.uk**



**environmentalhealth@stroud.gov.uk**



## Insect Nuisance



2002-2003  
Crime Reduction in Rural Areas  
2004-2005  
Services for Older People  
2007-2008  
Emergency Planning



INVESTOR IN PEOPLE

# INSECT NUISANCE

The vast majority of insect species do not cause a nuisance and are essential in maintaining ecosystems. However, there are some insect species that can cause a nuisance in sufficient quantities or seasonably.

The Clean Neighbourhoods and Environment Act, 2005 introduced insects as a new category of statutory nuisance, defined as:

*“any insects emanating from relevant industrial, trade or business premises and being prejudicial to health or a nuisance”*

Stroud District Council has a legal duty to investigate insect nuisance complaints made by people living within its area. This leaflet attempts to provide background information relating to:-

- Potential sources of insect nuisance;
- The law as it relates to insect nuisance; and
- What the Council can do to help.



# POTENTIAL SOURCES OF INSECT NUISANCE

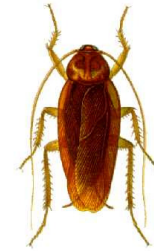
Ascertaining the source of an insect nuisance can sometimes be a difficult and lengthy process, as flying insects can travel considerable distances. Potential sources include:-

- Farms, poultry units and animal housing
- Sewage treatment works
- Waste premises, e.g. composting plants and landfill sites
- Manure/silage storage areas
- Ditches and drains on commercial premises

There are, though, a number of exemptions from the legislation. These include:-

- Domestic properties
- Premises which operate under an “Environmental Permit” (which are covered under other legislation)
- Land used as arable, grazing, meadow or pasture land (but not the buildings on such land)
- Land used for market gardens, nurseries or orchards
- Land forming part of an agricultural unit
- Land covered by (and the waters of) rivers, watercourses, lakes and ponds

# THE COMPLAINT PROCESS



If you wish to make a complaint regarding insect nuisance, it would be helpful if you could begin by making a log of the insects, their location and numbers over several days. It would also be useful if you could collect some of the insects to allow a proper identification.

If the source of an insect nuisance can be located, an assessment will be undertaken to determine whether the situation constitutes a statutory nuisance. A finding of statutory nuisance is only likely to exist where insects emanating from commercial premises significantly and unreasonably interfere with residents' use and enjoyment of their properties. This means that the insect problem in question must amount to more than an “annoyance” .

Where remedial action is required, we shall try to work with the responsible person to resolve the complaint informally. However, where the necessary co-operation is not forthcoming, an Abatement Notice can be served, non-compliance with which could lead to prosecution.