

## ANTI SOCIAL BEHAVIOUR STRATEGY

Foreword by : **Cllr David Wride** – Portfolio Holder for Community Cohesion.

**"The Council fully supports the adoption of an Anti Social Behaviour Strategy for the Stroud District. This initiative supports our commitment to delivering the Community Safety strategy, which is one of our Key priorities in making Stroud District a better place to live, work and visit."**

- **INTRODUCTION**
  
- **OBJECTIVES**
  
- **METHOD OF APPROACH**
  
- **RESOURCES**
  
- **KEY PERSONNEL**

The anti-social behaviour message for communities making up Stroud District is:

***'respect for people, their point of view and their property'***

## **INTRODUCTION**

The Anti-Social Behaviour Act, 2003, received Royal Assent in November 2003 and the first available powers came into force in January 2004. It is now a useful tool by which effective measures can be taken to combat anti-social behaviour.

This Act gives powers to the police, the local authority and other partners to take action against those, who blight our daily way of life, by failing to respect other people and the way those people wish to live their lives.

This strategy forms part of the area Crime & Disorder Reduction Partnership strategy, which operates throughout the District with those partner agencies.

To combat all areas of anti social behaviour, the Council has signed up to an agreed countywide policy and protocol with other partner agencies to share information, thus enabling a collective response, where necessary, to take place.

Stroud District Council officers will work within their own service unit strategies, together with an Anti-Social Behaviour Co-ordinator, who will operate on behalf of the Council and its partners to oversee those measures.

## **OBJECTIVES**

The Council's vision is:

***'to make Stroud District a better place to live, work and visit for everyone'***

In terms of anti-social behaviour our objectives are to:

***'use all powers at our disposal to reduce anti-social behaviour'***

and

***'work in partnership with other agencies and local communities'***

The Council with its partners will co-operate to effectively deal with all areas of anti-social behaviour. The main areas for the Council and its partners to concentrate on are:

- Housing
- Environment
- Public Order

Working with the police and partner agencies, the Act itself will be the basis on which officers will work, in conjunction with the powers vested in them via the Crime & Disorder Act 1998 and the Police Reform Act 2002. All Service Units of the Council are therefore able to utilise the powers and remedies available to them, not only under those Acts but all other avenues of legislation and best practice.

These Acts of Parliament are the main instruments leading to the enforcement of anti-social behaviour. Officers and the partnership will seek to bring best practice in dealing with all aspects of such behaviour. Mindful of the long-term interests of the community, all partners to the strategy will in the first instance attempt to use dialogue and agreement to change behaviour. Failure to remedy such anti-social behaviour, will lead to consideration of enforcement options, given under Acts of Parliament. There will also be available fast track routes to enforcement in more serious acts of anti-social behaviour, without referral to advice or guidance options.

As an integral part of tackling anti-social behaviour it is recognised that crime and fear of crime is a major component. Accordingly the Council is committed to ensuring it works alongside all partner organisations, including those linked to the Council through our Crime & Disorder Reduction Partnership.

## **METHOD OF APPROACH**

### **WORKING IN PARTNERSHIP TO UNDERSTAND**

Partners with the Council will, wherever possible, liaise to bring an understanding of anti-social behaviour to all parties. To this end, advice and guidance will be offered. The result hopefully, will see issues resolved without enforcement. A lead member of the partnership will work with the community by taking ownership of the issue and produce an action plan. Such plans may involve a single or multi-agency response.

### **ACTION UNDER THE ASB ACT**

Where advice and guidance is not acted upon the council (with the police and any other partner agency involved), is required under the Act to consult and agree subsequent action to be taken. This action will be swift and responsive.

It may result in individuals or companies becoming the subject of 'Acceptable Behaviour Contracts' and should the issue require, 'Anti-Social Behaviour Orders' being sought before civil and criminal courts.

The council and police also have the option to seek 'Anti-Social Behaviour Orders' where a person appears before the court to be sentenced in criminal proceedings. In such cases the Council and police are obliged to consult with the Crown Prosecution Service. The normal method of approach is shown in the flow chart hereunder.

Courts also have the power to apply 'Anti-Social Behaviour Orders' in their own right.

### **RECOGNISING TOLERANCE LEVELS**

Wherever possible, the Council with its partners will deal with the community in a fair-minded manner. However, those who flagrantly disregard the rights of others will be dealt with robustly and quickly. The Council is committed to bring good order where required to those sections of the community who have their daily lives disturbed, ever mindful that individuals have differing levels of tolerance.

### **FLEXIBILITY**

The Council will apply a sensible method approach to dealing with anti-social behaviour, but it remains the prerogative of the Council and its partners to be flexible. Accordingly, the normal method of approach may not be followed where the matter demands otherwise.

### **MONITORING PERFORMANCE**

The community should be assured that the Council and its partners will at all times act within the requirements of the law and apply best practice values, already operating within the council and partner agencies. Annual evaluation and reporting of performance will be undertaken using surveys, audits and anti-social behaviour records kept by the Council and its partners.

### **PUBLICITY**

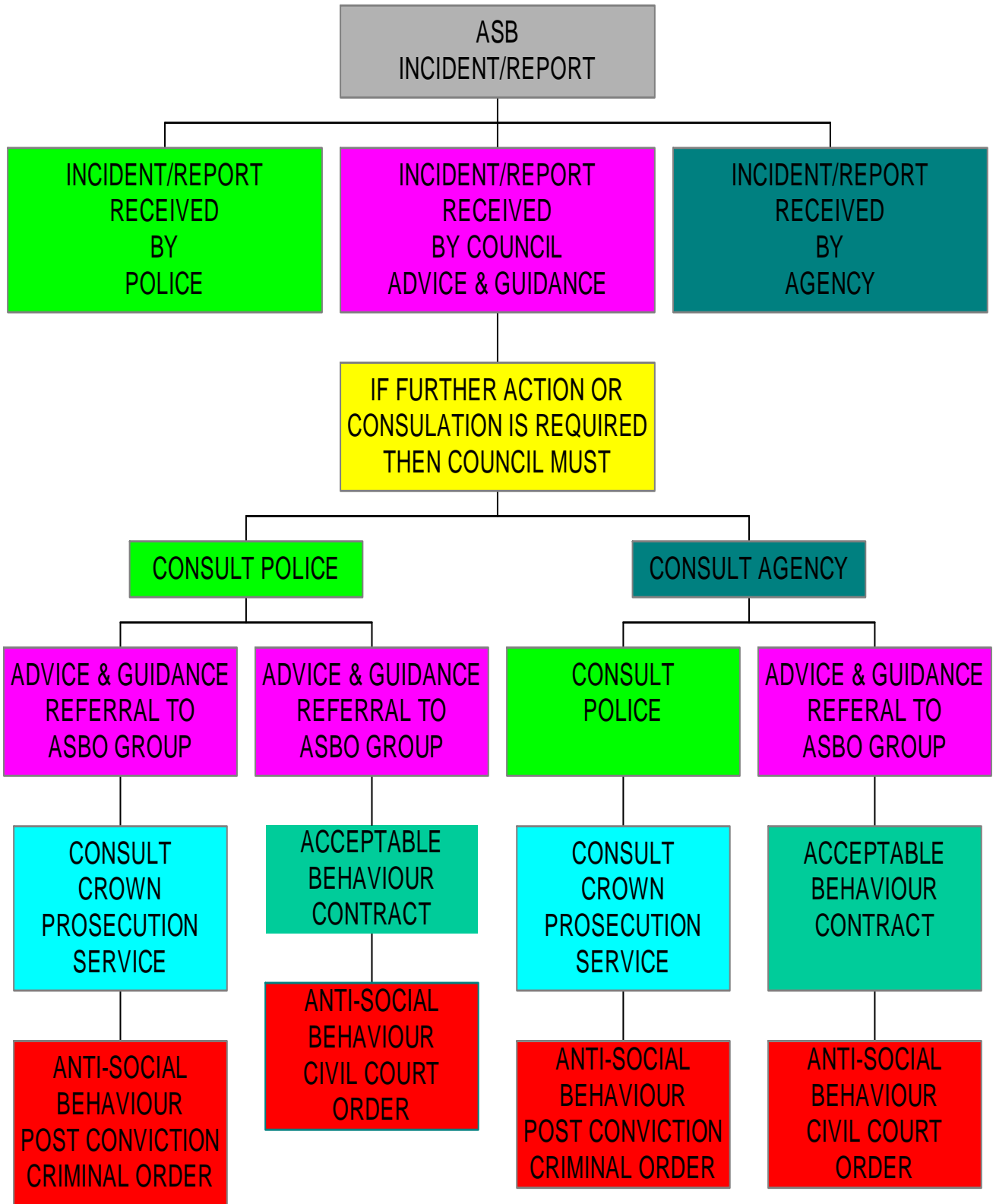
The Council will work with the Home Office to make the community aware of its attitude to anti-social behaviour. This means that when action is taken, the partners will work together to publicise the full activity, including the use of all forms of media and leaflets to ensure the community is always kept fully informed.

These will be delivered by using the Council's and national identifiable branding:-

# **TOGETHER**

[www.takingastand.org](http://www.takingastand.org) or [www.homeoffice.gov.uk/crime/antisocialbehaviour](http://www.homeoffice.gov.uk/crime/antisocialbehaviour)

*Flow chart setting out the normal method of approach by the council and its partners.*



## **RESOURCES**

The main thrust of the Council, to effectively combat anti-social behaviour within the District, will come from those officers already employed by the Council, together with staff from service units of partner agencies. Designated Council officers will be charged with responsibility of lead agency partner and implement action plans as agreed by the partnership.

Funding to tackle issues of anti-social behaviour will come from existing local raised revenue, together with additional government funding and any generated business initiatives. This enables the council to make a positive commitment to the community.

## **KEY PERSONNEL**

The following key management personnel, are committed to ensure that their staff will tackle anti-social behaviour issues on behalf of the community we serve, in line with the terms of this strategy.

Chief Executive  
Strategic Directors  
Head of Regeneration and Culture  
Head of Housing Management  
Head of Environmental Health  
Head of Legal Services  
Head of Community Safety Service  
Anti-Social Behaviour Co-ordinator